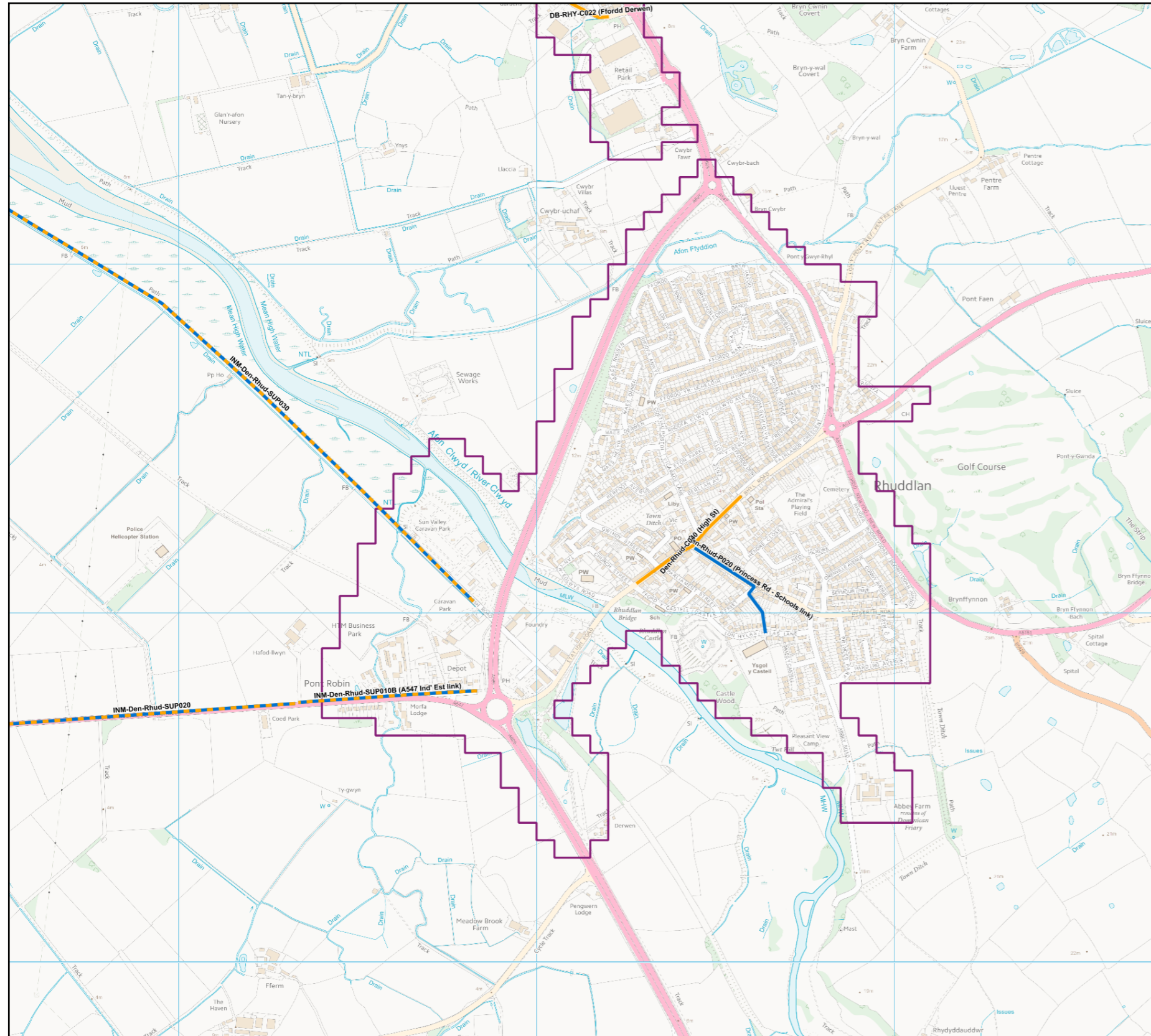









Rhuddlan INM 2017

Produced by the Active Travel web site. Gynhyrchwyd gan y wefan Teithio Llesol.



Legend / Eglurhad

-  Integrated Network Walking
-  Integrated Network Walking
-  Integrated Network Cycling
-  Integrated Network Cycling
-  Integrated Network Shared Use
-  Integrated Network Shared Use
-  Built-up areas / Ardaloedd Adeiledig

© Crown Copyright and database right 2014. Ordnance Survey 100021874. Welsh Government. © Hawlfraint a hawliau cronfa ddata'r Goron 2014. Rhif Trwydded yr Arolwg Ordnans 100021874. Whilst the Welsh Government have made every effort to ensure that the information on this website is accurate and up-to-date, the Welsh Government takes no responsibility for any incorrect information. The data is compiled from Public Rights of Way, Ordnance Survey ITN, Ordnance Survey ITN Urban Path and aerial photography derived data supplemented by field survey. The online map is provided for guidance only and is not a legal record. Er bod Llywodraeth Cymru wedi gwneud pob ymdrech i sicrhau bod y wybodaeth ar y wefan hon yn gywir ac yn gyfredol, mae Llywodraeth Cymru yn cymryd unrhyw gyfrifoldeb am unrhyw wybodaeth anghywir. Lluniwyd y data o hawliau tramwy cyhoeddus, RhTI yr AO, Llwybrau Trefol RhTI yr AO a data sy'n deillio o ffotograffau o'r awyr wedi'i ategu gan arolwg maes. Yn y map ar-lein yn darparu canllaw yn unig ac nid yw cofnod cyfreithiol.

