



# Cyfeirlyfr Gofal Sir Ddinbych



CYNGOR

*Sir Ddinbych*

*Denbighshire*

COUNTY COUNCIL

# Denbighshire Care Directory

2009/2010



## “I can rely on Barchester for quality care”

Taking the step of choosing professional care for yourself, your family or a friend can seem daunting. How can you be sure they will get the attention they need?

### A home-like feel with an award-winning reputation

At Barchester we can offer complete peace of mind through professional, personalised care – with respect for each person’s individuality. Every day is an opportunity to make friends and enjoy a wide range of activities – knowing that fully qualified staff are always close at hand. It’s all about quality of life.

### Our range of person-centred care services includes:

- 24-hour nursing and residential care.
- dementia care including Alzheimer’s.
- respite care and short breaks.
- convalescent care.
- day-time activities and care.

**Outstanding Healthcare** – Barchester has the highest quality ratings of the major providers, as awarded by the Government regulators.

**How can we help you? Why not call us or pop in for a chat over coffee or lunch?**

**Bradshaw Manor Care Home** 2 Chester Street,  
Rhyl LL18 3ER | Tel: 01745 882 010  
Email: Bradshaw@Barchester.com

**Bod Hyfryd Care Home** Northop Road,  
Flint CH6 5LH | Tel: 01352 763 396  
Email: Bodhyfryd@Barchester.com

**Rhiwlas Care Home** Northop Road,  
Flint CH7 5LG | Tel: 01352 735 236  
Email: Rhiwlas@Barchester.com



[www.barchester.com](http://www.barchester.com)

Gwasanaethau Cymdeithasol ar gyfer  
Oedolion yn Sir Ddinbych

Adran Gwasanaethau Cymdeithasol Sir Ddinbych



*CYNGOR*

*Sir Ddinbych*

*Denbighshire*

*COUNTY COUNCIL*

*Social Services for Adults in Denbighshire*

Denbighshire Social Services Department

Cyflwyniad .....	4	Henoed .....	30
Sut i gael cymorth? .....	6	Iechyd Meddwl .....	30
Pwy fydd yn cael blaenoriaeth ar gyfer derbyn gwasanaethau? .....	6	Anableddau Dysgu .....	31
Beth os wyf yn ofalydd? .....	8	<b>Cartrefi Nyrsio</b>	
Beth os wyf yn yr ysbyty? .....	8	Gofal Nyrsio Cyffredinol .....	33
A fydd tâl am y gwasanaethau? .....	8	Henoed gyda Salwch Meddwl.....	34
Beth am Daliadau Uniongyrchol? .....	10	Oedolion hefo Anableddau Psychiatrig/Cyflwr	
Beth sy'n digwydd i'r wybodaeth sydd gennych amdanaf? .....	12	Iechyd Meddwl .....	34
Beth os wyf eisiau gwneud sylwadau neu gwyno am y Gwasanaethau Cymdeithasol? .....	12	Hospis Preifat ar gyfer Gofal Lliniarol .....	35
Cartrefi Gofal yn Sir Ddinbych.....	12	<b>Asiantaethau Gofal Cartref</b> .....	35
Safonau mewn Cartrefi Gofal .....	14		
Sylwadau a Chwynion mewn Cartrefi Gofal .....	16		
Gwybodaeth bellach .....	16		
Swyddfeydd lleol a phwyntiau cyswllt	20		
Cyfundrefn Rowan .....	20		
Pwyntiau cyswllt y Cyngor .....	22		
Canolfan Alwadau Gorfforaethol Gwasanaethau Cwsmeriaid .....	22		
<b>Cartrefi Preswyl</b>			
Henoed a/neu Oedolion gydag Anabledd Corfforol .....	27		
Cartrefi Awdurdod Lleol .....	29		



Rydym yn cydnabod gyda diolch gefnogaeth y cwmnïau hynny y mae eu hysbysebion yn ymddangos yn y cyhoeddiad hwn.

Mae'n bleser gennym, felly, dynnu sylw ein darllenwyr i'w cyhoeddiadau. Mae angen ei gwneud yn glir, fodd bynnag, tra bo pob gofal wedi ei gymryd gyda llunio'r cyhoeddiad hwn a'r datganiadau ynddo, ni fedr yr hyrwyddwr na'r cyhoeddwr dderbyn cyfrifoldeb am unrhyw gamgymeriadau, na'r nwyddau neu'r gwasanaethau a hysbysebir.

Dyluniwyd a chyhoeddwyd gan Ten Alps Publishing, Trelawney House, Chestergate, Macclesfield, Sir Gaer SK11 6DW. Ffôn: (01625) 613000  
[www.tenalpspublishing.com](http://www.tenalpspublishing.com) Cyf: RNU (October 2009).

# Contents

---

Introduction .....	5	Mental Health.....	30
How do I get help? .....	7	Learning Disabilities .....	31
Who will get priority for services? .....	7	<b>Nursing Homes</b>	
What if I am a carer? .....	9	General Nursing Care .....	33
What if I am in hospital? .....	9	Elderly Mentally Ill .....	34
Will there be a charge for services? .....	9	Adults with	
What about Direct Payments? .....	13	Psychiatric Disorders/ Mental Health Conditions .....	34
What happens to information you have about me? .....	13	Private Hospice for Palliative Care .....	35
What if I want to comment on or complain about Social Services? .....	13	<b>Domiciliary Care Agencies.....</b>	<b>35</b>
Care Homes in Denbighshire.....	15		
Standards in Care Homes .....	17		
Comments and complaints in Care Homes .....	17		
Further information .....	17		
Local offices and contact points .....	21		
The Rowan Organisation .....	21		
Council contact points .....	23		
Corporate Customer Services Call Centre .....	23		
<b>Residential Homes</b>			
Elderly and/or Adults with a Physical Disability.....	27		
Local Authority Homes .....	29		
Elderly.....	30		



We very gratefully acknowledge the support of the firms whose advertisements appear throughout this publication.

As a reciprocal gesture we have pleasure in drawing the attention of our readers to their announcements.

It is necessary however for it to be made clear that, whilst every care has been taken in compiling this publication and the statements it contains, neither the promoter involved nor the Publisher can accept responsibility for any inaccuracies, or for the products or services advertised.

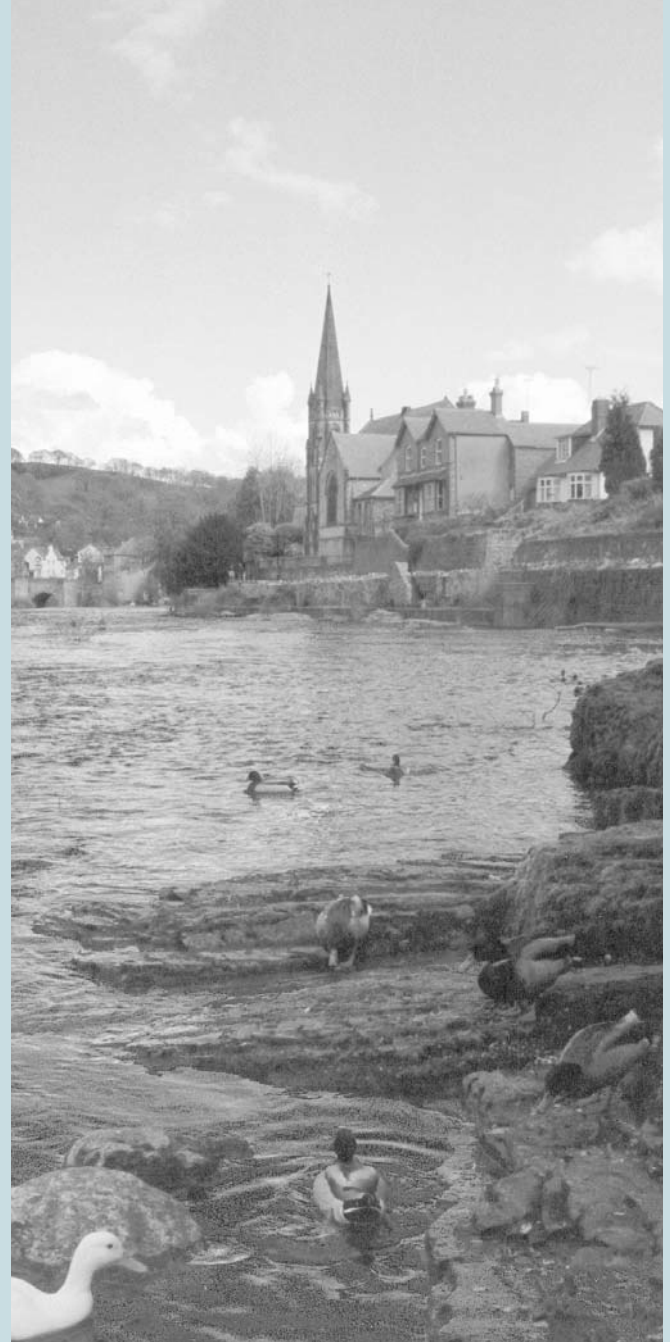
Designed and published by Ten Alps Publishing, Trelawney House, Chestergate, Macclesfield, Cheshire SK11 6DW. Tel: (01625) 613000  
[www.tenalpspublishing.com](http://www.tenalpspublishing.com) Ref: RNU (October 2009)

# Cyflwyniad

---

Efallai bydd amser pan fo pobl angen help a chymorth gan y Gwasanaethau Cymdeithasol: bydd rhai pobl angen cymorth am gyfnod byr, tra bydd eraill angen cymorth am dipyn hirach. Mae'r llyfryn hwn yn esbonio'r cymorth sydd ar gael gan y Gwasanaethau Cymdeithasol os ydych:

- Dros 18 oed ac yn anabl neu'n sâl, â phroblem gyda'ch golwg neu'ch clyw, neu yn camddefnyddio cyffuriau a/neu alcohol
- Yn berson hŷn
- Yn gofalu am rywun am unrhyw un o'r rhesymau hyn

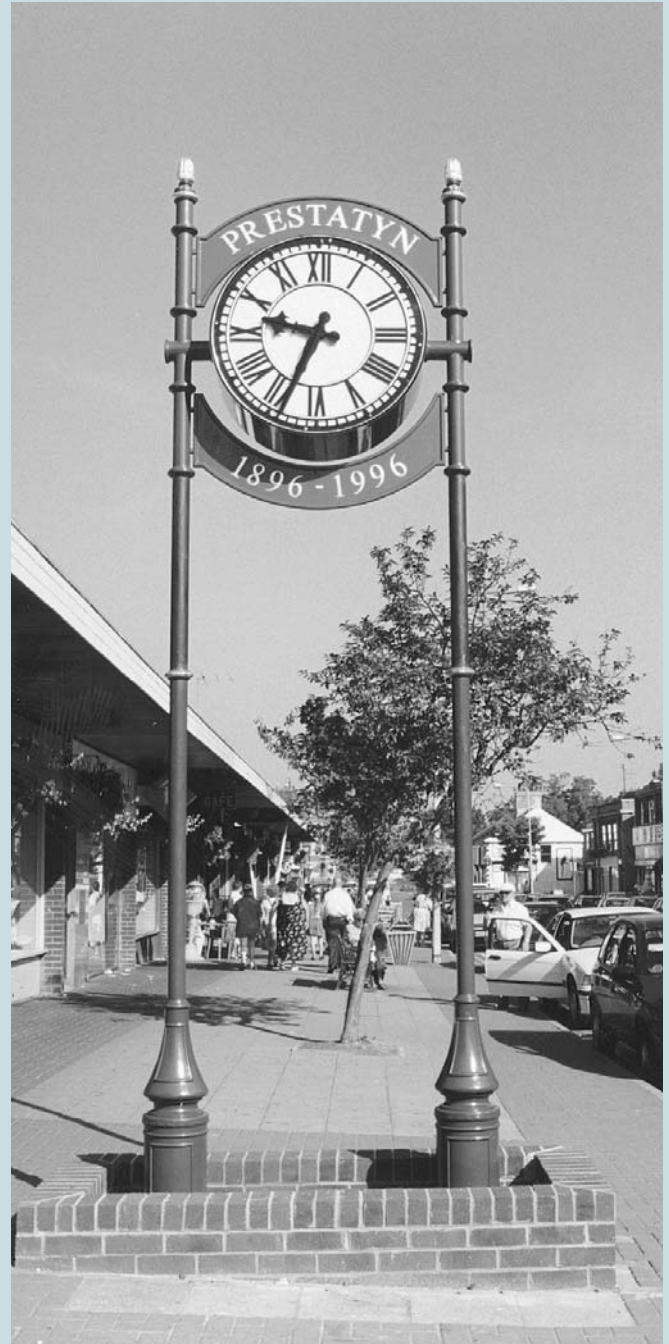


# Introduction

---

There may be times when people will need help and assistance from Social Services: some people may need this help for a short time whilst others may need help for longer. This booklet explains about the help available from Social Services if you are:

- Over 18 and are disabled or ill, have problems with sight or hearing, or misuse drugs and/or alcohol
- An older person
- Caring for someone for any of these reasons.



## Sut i gael cymorth?

---

I ganfod sut all y Gwasanaethau Cymdeithasol eich helpu, byddwch angen cysylltu â'r Tîm Cyswllt Cyntaf dros y ffôn, wyneb yn wyneb neu trwy wefan Cyngor Sir Ddinbych. Nodir y manylion ar dudalen 18.

Caiff eich ymholiad ei drin gan aelod o Dîm Cyswllt Cyntaf. Bydd y swyddogion Cyswllt Cyntaf yn delio hefo ceisiadau syml am gymorth i ddechrau.

I lunio darlun o'r math o gymorth fyddwch ei angen rhaid cael trafodaeth yn y swyddfa, dros ffôn neu yn yr ysbyty (os ydych yn glaf). Gall eich gofalwr neu eich cynrychiolydd fod yn bresennol os dymunwch.

Gofynnir sawl cwestiwn i chi fydd o gymorth i'r Swyddog Cyswllt Cyntaf nodi eich anghenion penodol. Bydd angen i ni hefyd gysylltu â'ch Meddyg Teulu neu Nyrs Gymunedol a.y.y.b. fel rhan o gasglu gwybodaeth.

Gallwn fel arfer ddelio hefo ceisiadau syml am gymorth yn syth, ond os byddwch angen gwasanaeth byddwn yn eich cyfeirio at y tîm priodol. Byddwn wedyn yn trefnu i Weithiwr Cymdeithasol wneud asesiad llawnach o'ch anghenion.

## Pwy fydd yn cael blaenoriaeth ar gyfer derbyn gwasanaethau?

---

Mae gan Wasanaethau Cymdeithasol Sir Ddinbych swm penodol o arian a roddir iddynt bob blwyddyn i helpu pobl Sir Ddinbych. Nid yw'r arian (maepeth ohono yn dod gan lywodraeth ganolog, peth o Dreth y Cyngor a pheth o daliadau) yn ddigon i ddiwallu pob angen. Felly, bydd rhai pobl yn derbyn gwasanaethau yn gyntaf, bydd yn rhaid i rai aros yn hirach; bydd rhai yn cael mwy o help nag eraill a bydd rhai yn cael eu hysbysu nad ydynt yn gymwys i dderbyn gwasanaethau. Mae blaenoriaeth person yn seiliedig ar faint o angen sydd, a pha mor gyflym y dylid ei ddiwallu. Bydd y bobl hynny



## How do I get help?

---

To find out if Social Services can help, you will need to contact the First Contact Team by telephone, face to face or via the Denbighshire County Council website, details of which can be found on page 19.

Your enquiry will be dealt with by a member of the First Contact Team. The First Contact Officers will deal with simple requests for help in the first instance.

To build up a picture of the sort of help you need a discussion might take

place in the office, via the telephone or in hospital (if you are an inpatient). Your carer or representative can be present if you wish.

You will be asked several questions which will assist the First Contact Officer identifying your specific needs. We may also need to contact your G.P., Community Nurse, etc as part of the initial gathering of information.

We can usually deal with simple requests for help straight away, but if it appears that you may need a service, we will refer you to the appropriate team. You will then be allocated to a Social Worker who will carry out a fuller assessment of your needs.

## Who will get priority for services?

---

Denbighshire Social Services has an amount of money given to it each year to help the people of Denbighshire. The money (some comes from central government, some from Council Tax and some from

sydd fwyaf mewn perygl o golli eu hannibyniaeth yn derbyn y flaenoriaeth uchaf.

## Beth os wyf yn ofalydd?

---

Mae gofalwyr yn bobl sy'n edrych ar ôl aelodau'r teulu neu ffrindiau sydd angen gofal, cymorth neu gefnogaeth. Os ydych yn ofalydd, mae eich anghenion chi'n bwysig hefyd, ac efallai eu bod yn wahanol i rai'r person rydych yn gofalu amdanynt. Os ydych yn darparu llawer o ofal yn rheolaidd, mae gennych hawl i'ch asesiad eich hunan a chael cynnig gwasanaethau sy'n cymryd eich anghenion chi i ystyriaeth. Darllenwch ein taflen, Cymorth i Ofalwyr.

## Beth os wyf yn yr ysbyty?

---

Os ydych angen cefnogaeth wrth adael ysbyty, yna dylid asesu hyn a chynllunio amdano. Ni ddylech gael eich rhyddhau o'r ysbyty nes bydd y gwasanaethau priodol wedi eu trefnu



ac mae cynllun clir ar gyfer eich gofal ar ôl i chi adael yr ysbyty.

Mae Swyddog Cyswllt Cyntaf yn gweithio yn Ysbyty Glan Clwyd o fewn y Tîm Gwaith Cymdeithasol Ysbyty.

## A fydd tâl am y gwasanaethau?

---

Nid oes tâl i'w wneud am wybodaeth, cyngor na thrafodaeth os ydych

charges) is not enough to meet every need. So, some people will have their needs met first, some will have to wait longer, some people will get more help than others and some will be advised that they do not qualify for services. A person's priority is based on how great their assessed need is, and how urgently it should be met. Those people who are most at risk of losing their independence will be given the highest priority.

## What if I am a carer?

---

Carers are people who look after family members or friends who need care, help or support. If you are a carer, your needs are important too and may be different from the needs of the person you are caring for. If you are providing a lot of care on a regular basis you have the right to your own assessment and to be offered services that take account of your needs. A carer's information pack is available on request.

## What if I am in hospital?

---

If you need support when you leave hospital this should be assessed and planned for. You should not be discharged until the services you need have been organised and there is a clear plan for your care after you have left hospital.

There is a First Contact Officer based at Glan Clwyd Hospital within the Hospital Social work Team.

## Will there be a charge for services?

---

There is no charge for information, advice or for discussion about whether you need help. There is no charge for an assessment of your needs or your carer's needs.

There may be a charge for some, but not all, services. This includes care to help you manage at home as well as residential care. If there is a charge, unless you wish to meet the full cost yourself, we will need to know about your finances, including your income

angen help ai peidio. Nid oes tâl am asemiad o'ch anghenion nac anghenion eich gofalydd.

Efallai y bydd angen talu am rai, ond nid pob un, o'r gwasanaethau. Mae hyn yn cynnwys gofal i'ch helpu ymdopi gartref ynghyd â gofal preswyl. Os oes tâl, oni fyddwch eisiau talu'r gost lawn eich hunan, yna byddwn angen gwybod am eich sefyllfa ariannol, gan gynnwys eich incwm ac unrhyw gynilion. Bydd yn rhaid i rai pobl dalu cost lawn eu gwasanaethau, ond efallai y bydd gan eraill hawl i help gyda pheth neu'r cyfan o'r gost, yn dibynnu ar eu hamgylchiadau ariannol. Efallai y bydd ffioedd gwahanol mewn cartrefi mewn siroedd cyffiniol - cysylltwch â'r Awdurdod Lleol dan sylw.

Mae Tîm Hawliau Lles Gwasanaethau Cymdeithasol Sir Ddinbych yn cynnal lein gymorth yn **rhad ac am ddim a chyfrinachol** sydd ar gael o ddydd Llun i ddydd Gwener 10:00am i

4:00pm. Medrent gynghori ar ystod o fudd-daliadau efallai y bydd gennych hawl iddynt. Y rhif ffôn yw 0800 1696625.

## Beth am Daliadau Uniongyrchol?

---

Os ydych yn gymwys i dderbyn help gan y Gwasanaethau Cymdeithasol tra rydych yn byw gartref, medrwn nawr roddi arian i chi yn lle darparu gwasanaeth gofal. Gelwir hyn yn Daliadau Uniongyrchol. Medrwn wario'r arian hwn ar drefnu'r gefnogaeth sydd yn diwallu eich anghenion.

Mae Cyfundrefn Rowan yn gweithio gyda'r Gwasanaethau Cymdeithasol yn Sir Ddinbych a medrent roddi cyngor i chi yn rhad ac am ddim a'ch helpu i ddeall a defnyddio Taliadau Uniongyrchol.

and any savings. Some people will have to meet the full cost of their services, but others may be entitled to help with some or all of the cost, depending on their financial circumstances. Homes in bordering counties may have different fee levels, please contact the Local Authority in question.

Denbighshire Social Services Welfare Rights Team run a **free and confidential** help line which is open Monday to Friday 10:00am to 4:00pm. They can advise on a range of benefits to which you may be entitled.

The telephone number is 0800 1696625.



Mae manylion ar sut i gysylltu gyda Chyfundrefn Rowan ar dudalen 20.

## Beth sy'n digwydd i'r wybodaeth sydd gennych amdanaf?

---

Mae Cyngor Sir Ddinbych yn ddefnyddiwr cofrestredig dan y Ddeddf Gwarchod Gwybodaeth. Mae angen i ni gadw a phrosesu gwybodaeth am bobl dan ganllawiau llym. Bydd unrhyw wybodaeth sydd gennym amdanoch yn cael ei thrin yn gyfrinachol a bydd eich manylion yn cael eu cadw yn ddiogel. Mae canllawiau sydd yn rhaid eu dilyn gan y Gwasanaethau Cymdeithasol os bydd angen rhannu gwybodaeth am bobl. Cysylltwch gyda ni os hoffech wybod mwy.

Dan y Ddeddf Gwarchod Gwybodaeth, mae gennych hawl i ofyn am gopi o'r wybodaeth y mae'r Gwasanaethau Cymdeithasol wedi ei chofnodi amdanoch. I ganfod sut medrwy ofyn am yr wybodaeth hon, cysylltwch â'r Swyddog Sicrhau Ansawdd.

Gall y Swyddog Sicrhau Ansawdd roi cymorth i chi yn ôl Deddf Rhyddid Gwybodaeth a mathau eraill o wybodaeth sydd wedi ei gofnodi gan yr Awdurdod Lleol.

## Beth os wyf eisiau gwneud sylwadau neu gwyno am y Gwasanaethau Cymdeithasol?

---

Rydym yn croesawu eich sylwadau, canmoliaeth a chwynion. Medrwy gysylltu gyda ni trwy unrhyw un o'n swyddfeydd neu'n pwyntiau cyswllt, trwy wefan Cyngor Sir Ddinbych neu ofyn au y daflen, "Byddem yn hoffi clywed eich barn ar y gwasanaethau yr ydyn yn eu darparu".

Am fanylion, gweler tudalen 18.

## Cartrefi Gofal yn Sir Ddinbych

---

Bydd Gwasanaethau Cymdeithasol Sir Ddinbych yn gwneud popeth a fedrent

## What about Direct Payments?

---

If you are eligible for help from Social Services whilst you are living at home, we can now give you cash instead of providing a care service. This is called a Direct Payment. You can spend this money on arranging the support that meets your needs.

The Rowan Organisation are working in partnership with Social Services in Denbighshire, and they can give you free support and help with understanding and managing Direct Payments. Details of how to contact the Rowan Organisation are on page 21.

## What happens to information you have about me?

---

Denbighshire County Council is a registered user under the Data Protection Act. We are required to hold and process information about people under strict guidelines. Any information that we have about you will be treated confidentially and your

details will be held safely and securely. There are guidelines that must be followed by Social Services if it is necessary to share information about people. Please get in touch with us if you would like to know more.

Under the Data Protection Act you have the right to request a copy of the information that Social Services has recorded about you. To find out how you can request this information, please contact the Quality Assurance Officer.

The Quality Assurance Officer can also assist you in line with the Freedom of Information Act with access to all other types of recorded information held by the Local Authority.

## What if I want to comment on or complain about Social Services?

---

We welcome your comments, compliments and complaints. You can get in touch through any of our offices or contact points, or

i helpu pobl aros yn eu cartrefi eu hunain cyn hired ag y bo modd. Os na fedrwch aros gartref, hyd yn oed gyda chymorth, yna efallai yr awgrymir arhosiad mewn Cartref Gofal. Mae Cartrefi Gofal yn cynnig ystod eang o gefnogaeth, ac yn cynnwys beth a alwyd yn gartrefi preswyl a nyrsio. Mae hyd yr arhosiad yn medru amrywio o ychydig o ddyddiau i symud yn barhaol. Efallai na fydd modd i chi fynd i'r cartref sy'n ddewis cyntaf gennych, ac efallai y bydd angen i chi ystyried opsiynau eraill.

Mae rhai Cartrefi Gofal yn cynnig rhywle i fyw a help gyda gofal personol sylfaenol megis help gydag ymolchi, ymdrochi, gwisgo, anghenion toiled a gweini meddyginiaeth. Mae Cartrefi eraill yn darparu gofal i bobl sydd angen goruchwyliaeth nyrsio barhaus oherwydd problemau iechyd corfforol neu feddyliol. Mae'r ystod eang sydd ar gael yn golygu y dylai'r math priodol o Gartref Gofal fod ar gael, beth bynnag yw eich anghenion corfforol, cymdeithasol neu iechyd meddwl.

Os cewch eich asesu fel rhywun sydd angen gofal nyrsio, mae'r Gwasanaeth

Iechyd Gwladol (GIG) yn gyfrifol am dalu am y gofal a gewch gan nyrs gofrestredig yn y cartref. Mae hyn yn golygu y bydd cyfran o gost eich gofal bob wythnos yn cael ei dalu gan y GIG a bydd ond angen i chi dalu gweddill y gost o aros yn y Cartref Gofal. Bydd pobl a fydd angen gofal rheolaidd gan staff iechyd arbenigol, er enghraifft oherwydd bod eu hanghenion nyrsio yn arbennig o gymhleth, neu mae eu hangen am ofal arbenigol yn aml ac ni ellir ei ddarogan, gael talu eu ffioedd cyfan gan yr GIC. Medrwch ofyn i'r meddyg neu'r nyrs am wybodaeth bellach.

Roedd cofrestru deul yn derm a ddefnyddiwyd cyn Ebrill 2002 ar gyfer cartrefi a oedd wedi eu cofrestru ar gyfer gwelyau preswyl a nyrsio. Y term heddiw yw Cartref Gofal - gall hwn fod yn gartref gyda gwelyau nyrsio'n unig neu gyfuniad o nyrsio a phreswyl.

## Safonau mewn Cartrefi Gofal

---

Mae angen i Gartrefi Gofal gydymffurfio gyda Deddf Safonau Gofal 2000 ac fe gânt eu harchwilio o

Denbighshire County Council website or you can ask for our leaflet.

“We would like to hear your views on the services we provide.”

For details, please see page 19.

## Care Homes in Denbighshire

---

Denbighshire Social Services will do everything we can to help people remain in their own homes for as long as possible. If you cannot manage at home, even with support, then it may be that a stay in a Care Home is suggested. Care Homes offer a wide range of support, and include what were formerly known as residential and nursing homes. The length of stay can vary from a few days to a permanent move. Access may not be available to the first home of your choice, you may have to consider other options.

Some Care Homes offer somewhere to live and help with basic personal care such as help with washing, bathing, dressing, toilet needs and administration of medicines. Other Homes provide care for people who

need continual nursing supervision due to physical or mental health problems. The wide range available means that the right type of Care Home support should be available, whatever your physical, social or mental health needs.

If you are assessed as needing nursing care, the NHS are responsible for paying for the care that you receive from a registered nurse in the home. This means that a proportion of the cost of your care every week will be paid by the NHS, and you will only be charged the balance of the cost of staying in the Care Home. People who will go on needing regular care by specialist health staff, for example, because their nursing needs are especially complicated or their need for specialist care is frequent and unpredictable, should have all their fees paid by the NHS. You can ask your doctor or nurse for further information.

Dual registration was a term used prior to April 2002 for homes which were registered for residential and nursing beds. Today the term is Care Home - this may be homes which have only nursing beds or nursing and residential combined.

leiaf dwywaith y flwyddyn gan yr Arolygiaeth Gofal a Gwasanaethau Cymeithasol Cymru. Ar ôl pob ymweliad mae'r arolygwyr yn paratoi adroddiad, ac argymhellir bod darpar drigolion a'u cynrychiolwyr yn darllen yr adroddiad diweddaraf cyn penderfynu ar gartref gofal. Mae copïau ar gael gan y cartref neu gan:

Arolygiaeth Gofal a Gwasanaethau Cymeithasol Cymru  
Swyddfa Ranbarthol Gogledd-  
Ddwyrain Cymru, Broncoed House  
Parc Busnes Broncoed  
Ffordd Wreccsam  
Yr Wyddgrug CH7 1HP

**Rhif ffôn 01352 707900**  
**[www.csiw.wales.gov.uk](http://www.csiw.wales.gov.uk)**

Mae'r adroddiadau hyn hefyd ar gael ar ein gwefan. Am fanylion, gweler tudalen 18.

## Sylwadau a Chwynion mewn Cartrefi Gofal

---

Rhaid i bob cartref gael trefn i drigolion fedru cwyno. Mae hyn yn cynnwys cartrefi gofal a gaiff a rhedeg gan Gyngor Sir Ddinbych. Disgwylir i gartrefi

sicrhau bod pob trigolyn neu eu cynrychiolydd yn ymwybodol o drefn gwyno'r cartref, a ddylai gynnwys manylion o sut i gysylltu gydag Arolygiaeth Gofal a Gwasanaethau Cymeithasol Cymru.

Mae Cyngor Sir Ddinbych, gyda chymorth llawer o bobl leol, wedi llunio set o safonau y medrwch ddisgwyl eu bod yn cael eu cyflawni mewn Cartrefi Gofal ledled y sir.

## Gwybodaeth bellach

---

Mae Cyngor Sir Ddinbych wedi cyhoeddi nifer o daflenni a fydd yn rhoi mwy o wybodaeth ar y pynciau yn y llyfryn hwn. Mae'r rhain yn cynnwys:

- Cymorth i Bobl gydag Anallu Gweledol a'u Gofalwyr
- Gwasanaethau i Bobl sy'n Fyddar neu'n Drwm eu Clyw
- Pecyn Gwybodaeth Gofalwyr
- Gwasanaethau Cymdeithasol i Oedolion yn Sir Ddinbych - canllaw l'ch helpu i ganfod y gwasanaethau cywir.

## Standards in Care Homes

---

Care homes are required to comply with the Care Standards Act 2000 and are inspected at least twice a year by the Care and Social Services

Inspectorate for Wales. After each visit the CSSIW inspectors prepare a report, and prospective residents and their representatives are recommended to read the most recent report before deciding on a care home. Copies are available from the home or from:

Care and Social Services Inspectorate for Wales

North East Wales Regional Office:

Broncoed House

Broncoed Business Park

Wrexham Road

Mold CH7 1HP

**Telephone number 01352 707900**

**[www.csiw.wales.gov.uk](http://www.csiw.wales.gov.uk)**

You may also get these reports on our website. For details please see page 19.

## Comments and complaints in Care Homes

---

All homes must have a procedure for residents to make complaints.

This includes Care Homes run by Denbighshire County Council.

Homes are expected to ensure that every resident or their representative is aware of the home's complaints procedure, which should include details of how to contact the Care and Social Services Inspectorate for Wales.

Denbighshire Social Services, assisted by many local people, have drawn up a set of standards which you can expect to be met in Care Homes across the county.

## Further information

---

Denbighshire Social Services have produced a range of leaflets which will give you more information on many of the subjects mentioned in this booklet. These include:

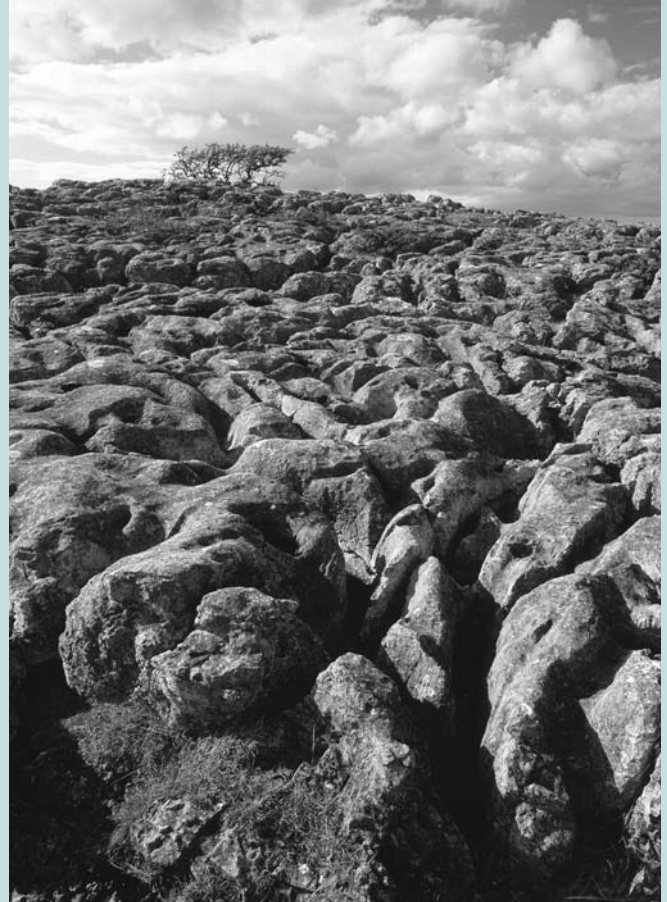
- Help for People with a Visual Impairment and their carers

- Eich Llais, taflen a pholisi cwynion y Gorfforaeth
- Cysylltu hefo'r Gwasanaethau Cymdeithasol... cadw mewn cyswllt hefo'r Tîm Cyswllt Cyntaf
- Teleofal
- Cerdyn Argyfwng Gofalwyr
- Cynllun Bathodyn Glas: consesiynau parcio
- Cael eich talu'n gywir – hawliau lles

Medrwch ofyn am gopi o unrhyw un o'r rhain yn swyddfeydd y Gwasanaethau Cymdeithasol neu yn y Siopau Un Alwad. Maent hefyd ar gael ar ein gwefan,  
[www.sirddinbych.gov.uk](http://www.sirddinbych.gov.uk)

- Services for People who are Deaf or Hard of Hearing
- Carers Information Pack
- Social Services for Adults in Denbighshire – a guide to help you find the right services
- Your Voice, the corporate complaints policy and leaflet
- Contacting Social Services ... get in touch with the First Contact Team
- Telecare
- Carers Emergency Card
- Blue Badge Scheme: parking concessions
- Getting paid right – Welfare Rights

You can ask at any of the Social Services offices or One Stop Shops for copies of any of these. They are also available on our website, [www.denbighshire.gov.uk](http://www.denbighshire.gov.uk)



## Swyddfeydd lleol a phwyntiau cyswllt

---

Gwasanaethau Cymdeithasol,  
Cyswllt Cyntaf

**Swyddfa leol** **Delio gydag**  
**Y Rhyl** **ardaloedd o**  
**Brestatyn i Lanelwy**

Cyfeiriad: 64 Brighton Road,  
Y Rhyl LL18 3HN

**Swyddfa leol** **Delio gydag**  
**Rhuthun** **ardaloedd o**  
**Ddinbych i Llangollen**

Cyfeiriad: Neuadd Y Sir,  
Ffordd Wynnstay,  
Rhuthun LL15 1YN

Ffôn: 01824 712900

Minicom: 01745 345160

Ffôn testun: 07917 597993

Oriau agor:

Llun i Iau 8.30 am i 5.00 pm

Gwener 8.30 am - 4.30 pm

E-bost:

[firstcontactteam@sirddinbych.gov.uk](mailto:firstcontactteam@sirddinbych.gov.uk)

**Gwaith Cymdeithasol Ysbyty**

Cyfeiriad: Ysbyty Glan Clwyd  
Bodelwyddan

Ffôn: 01745 445409

Ffôn testun: 01745 534313

## Pencadlys Gwasanaethau Cymeithasol

Cyfeiriad: Ty Nant, Ffordd  
Ty Nant, Prestatyn  
LL19 9LG

Ffôn: 01824 706655

E-bost: [ssdcomments@sirddinbych.gov.uk](mailto:ssdcomments@sirddinbych.gov.uk)

Oriau agor:

Llun i Iau 8.30am - 5.00pm

Gwener 8.30am - 4.30pm

**Tîm Hawliau** **Cyngor a help ar**  
**Lles** **Fudd - daliadau**  
**a Dyledion**

Ffôn: 0800 169 6625

Oriau agor:

Llun i Gwener 10.00 am - 12.30 pm

& 1.30 pm - 4.00pm

**Gwasanaethau Gwaith**  
**Cymdeithasol mewn Argyfwng (tu**  
**allan i oriau arferol)**

Ffôn: 01745 331103

**Cyfundrefn Rowan (ar gyfer cyngor**  
**ar Daliadau Uniongyrchol)**

Rhadffôn: 0800 783 1755

Minicom: 02476 374439

Ffacs: 02476 374948

Oriau agor:

Llun - Gwener 9am - 5pm

Am wybodaeth bellach ewch i:

[www.therowan.org](http://www.therowan.org)

## Local offices and contact points

---

### Social Services First Contact

**Rhyl local office**      **Covers areas from Prestatyn to St Asaph**

Address:      64 Brighton Road,  
Rhyl LL18 3HN

**Ruthin local office**      **Covers areas from Denbigh to Llangollen**

Address:      County Hall,  
Wynnstay Road,  
Ruthin LL15 1YN

Telephone:      01824 712900

Minicom:      01745 345160

Textphone:      07917 597993

Opening hours:

Monday to Thursday

8.30 am to 5.00 pm

Friday 8.30 am - 4.30 pm

E-mail:

[firstcontactteam@denbighshire.gov.uk](mailto:firstcontactteam@denbighshire.gov.uk)

### Hospital Social Work

Address:      Ysbyty Glan Clwyd,  
Bodelwyddan

Telephone:      01745 445409

Textphone:      01745 534313

### Social Services Headquarters

Address:      Ty Nant, Nant Hall Road  
Prestatyn LL19 9LG

Telephone:      01824 706655

E-mail:

[ssdcomments@denbighshire.gov.uk](mailto:ssdcomments@denbighshire.gov.uk)

Opening hours:

Monday to Thursday 8.30am - 5.00pm

Friday 8.30am - 4.30pm

**Welfare Rights Team**      **Advice and help on Benefits and Debts**

Telephone:      0800 169 6625

Opening hours:

Monday to Friday 10.00 am - 12.30 pm  
& 1.30 pm - 4.00 pm

### Emergency Social Work Service (out of hours)

Telephone:      01745 331103

### The Rowan Organisation (for Direct Payments advice)

Freephone:      0800 783 1755

Minicom:      02476 374439

Fax:      02476 374948

Opening hours:

Monday – Friday 9am – 5pm

For more information log onto:  
[www.therowan.org](http://www.therowan.org)

## Pwyntiau cyswllt y Cyngor

---

Siopau Un Alwad am gyngor  
cyffredinol ar wasanaethau'r  
Cyngor

### Prestatyn

Cyfeiriad: Tŷ Nant,  
Ffordd Tŷ Nant,  
Prestatyn, LL19 9LG

Ffôn: 01824 706600

Oriau agor:

Llun i Iau 9.00 am - 12.30 pm  
& 1.15 pm - 4.45 pm

Gwener 9.00 am - 12.30 pm  
& 1.15 pm - 4.15 pm

### Llangollen

Cyfeiriad: The Chapel,  
19-21 Castle Street,  
Llangollen, LL20 8NY

Ffôn: 01978 869606

Oriau agor:

Mawrth a Gwener 9.30 am - 12.30 pm  
& 1.30 pm - 5.30 pm

Mercher 9.30 am - 1.00 pm

Ar gau ar dydd Llun a dydd Iau

### Corwen

Cyfeiriad: Neuadd Edeyrnion,  
Y Sgwâr,  
Corwen LL21 0DR

Ffôn: 01490 412378

Oriau agor:

Llun 10.00 am - 5.30 pm

Mawrth 10.00 am - 7.00 pm

Mercher 10.00 am - 1.00 pm

Iau 10.00 am - 5.30 pm

Gwener 10.00 am - 7.00 pm

### Canolfan Alwadau Gorfforaethol – Gwasanaethau Cwsmeriaid

Cyfeiriad: Neuadd y Sir,  
Ffordd Wynnstay,  
Rhuthun LL15 1YN

Ffôn: 01824 706000

### Llanelwy

Siop un Alwods  
Llyfrgell Llanelwy,  
The Roe,  
Llanelwy LL17 0LU

Ffôn: 01745 582253

Ffacs: 01824 708402

Oriau agor:

Llun 9.30 am - 1.00 pm  
2.00 pm - 4.30 pm

Mawrth 9.30 am - 1.00 pm  
2.00 pm - 4.30 pm

Mercher 9.30 am - 1.00 pm  
2.00 pm - 4.30 pm

Iau Ar Gau

Gwener 9.30 am - 1.00 pm  
2.00 pm - 4.00 pm

## Council contact points

---

One Stop Shops for general advice on Council Services

### **Prestatyn**

Address: Ty Nant,  
Nant Hall Road,  
Prestatyn, LL19 9LG

Telephone: 01824 706600

Opening hours:

Monday to Thursday  
9.00 am - 12.30 pm  
& 1.15 pm - 4.45 pm  
Friday 9.00 am - 12.30 pm  
& 1.15 pm - 4.15 pm

### **Llangollen**

Address: The Chapel,  
19-21 Castle Street  
Llangollen, LL20 8NY

Telephone: 01978 869606

Opening hours:

Tuesday and Friday 9.30 am - 12.30 pm  
& 1.30 pm - 5.30 pm  
Wednesday 9.30 am - 1.00 pm  
Closed Monday and Thursday

### **Corwen**

Address: Neuadd Edeyrnion,  
The Square,  
Corwen, LL21 0DR

Telephone: 01490 412378

Opening hours:

Monday 10.00 am - 5.30 pm  
Tuesday 10.00 am - 7.00 pm  
Wednesday 10.00 am - 1.00 pm  
Thursday 10.00 am - 5.30 pm  
Friday 10.00 am - 7.00 pm

### **Corporate Customer Services Call Centre**

Address: County Hall,  
Wynnstay Road,  
Ruthin, LL15 1YN

Telephone: 01824 706000

### **St Asaph**

St Asaph One Stop Shop  
St Asaph Library,  
The Roe,  
St Asaph LL17 0LU

Telephone: 01745 582253

Fax: 01824 708402

Opening Hours:

Monday 9.30 am - 1.00 pm  
2.00 pm - 4.30 pm  
Tuesday 9.30 am - 1.00 pm  
2.00 pm - 4.30 pm  
Wednesday 9.30 am - 1.00 pm  
2.00 pm - 4.30 pm  
Thursday Closed  
Friday 9.30 am - 1.00 pm  
2.00 pm - 4.00 pm

**Ruthin**

Neuadd y Sir

Wynnstay Road

Ruthin LL15 1YN

Ffôn: 01824 706024

Oriau agor:

Llun i Gwener 8.30 am - 5.00 pm

**Dinbych**

Llyfrgell Dinbych

The Roe

Hall Square

Dinbych LL16 3NU

Ffôn: 01745 816313

Ffacs: 01745 816427

Oriau agor:

Llun 9.30 am - 7.00 pm

Mawrth 9.30 am - 5.00 pm

Mercher 9.30 am - 7.00 pm

Iau 9.30 am - 5.00 pm

Gwener 9.30 am - 5.00 pm

Sadwrn 9.30 am - 12.30 pm

**Rhuddlan**

Siop un Alwad

Llyfrgell Rhuddlan

Vicarage Lane

Rhuddlan

Rhyl LL18 2UE

Ffôn: 01745 590719

Oriau agor:

Llun 9.30 am - 7.00 pm

Mawrth Ar gau

Mercher 9.30 am - 5.00 pm

Iau 9.30 am - 5.00 pm

Gwener 9.30 am - 5.00 pm

Sadwrn 9.30 am - 12.30 pm

**Ruthin**

County Hall  
Wynnstay Road  
Ruthin LL15 1YN  
Telephone: 01824 706024

**Opening Hours:**

Monday to Friday 8.30 am - 5.00 pm

**Denbigh**

Denbigh Library  
The Roe  
Hall Square  
LL16 3NU  
Telephone: 01745 816313  
Fax: 01745 816427

**Opening Hours:**

Monday	9.30 am - 7.00 pm
Tuesday	9.30 am - 5.00 pm
Wednesday	9.30 am - 7.00 pm
Thursday	9.30 am - 5.00 pm
Friday	9.30 am - 5.00 pm
Saturday	9.30 am - 12.30 pm

**Rhuddlan**

Rhuddlan One Stop Shop  
Rhuddlan Library  
Vicarage Lane  
Rhuddlan  
Rhyl LL18 2UE  
Telephone: 01745 590719

**Opening Hours:**

Monday	9.30 am - 7.00 pm
Tuesday	Closed
Wednesday	9.30 am - 5.00 pm
Thursday	9.30 am - 5.00 pm
Friday	9.30 am - 5.00 pm
Saturday	9.30 am - 12.30 pm

OK, so we're better  
at removing bad ads  
than making good ones.

The Advertising Standards Authority  
Telephone 020 7492 2222 [www.asa.org.uk](http://www.asa.org.uk)



Keeping advertising  
standards high



The Positive Choice

GRANGE RESIDENTIAL CARE LTD.  
The Grange,  
The Roe,  
St. Asaph,  
Denbighshire LL17 0LU  
Tel: 01745 583800 Fax: 01745 584900



#### Leaders in Specialist Media

- > Full Publishing Services  
Print and On Line
- > Advertising and Sponsorship Sales
- > Website and Web TV Development
- > Event Management
- > Media Planning and Buying
- > Design and Marketing Services
- > Video and Broadcast Services
- > Communications Consultancy

Ten Alps Publishing, Trelawney House, Chestergate, Macclesfield, Cheshire SK11 6DW  
Phone: 01625 613000 Fax: 01625 511446 Email: [info@tenalpspublishing.com](mailto:info@tenalpspublishing.com)  
[www.tenalpspublishing.com](http://www.tenalpspublishing.com)

## Henoed a/neu Oedolion gydag Anabledd Corfforol Elderly and/or Adults with a Physical Disability

ENW'R CARTREF	RHIF FFÔN	PERCHENNOG	RHEOLWR	COFRESTRWYD AR GYFER
NAME OF HOME	TEL NO	PROPRIETOR	MANAGER	REGISTERED FOR
<b>ABBEY DINGLE</b> Abbey Road, Pentre Felin, Llangollen LL20 8DD	01978 860432	Abbey Dingle Nursing Homes Ltd	Carol Patricia Mascarenhas	28
<b>BALMORAL HOUSE</b> 22/24 Queens Walk, Rhyl LL18 3NG	01745 353483	Mr N P Woodward	Mr N P Woodward	20
<b>BEACH COURT</b> 35 Beach Road West, Prestatyn LL19 7LL	01745 854198	Integra Management Services UK Ltd	Ms Dawn Ellis	25
<b>BELMONT HOUSE</b> 65 Russell Road, Rhyl LL18 3DH	01745 342158	Chamarel Care Ltd	Jamayantee Boyrangee	12
<b>BRON HAUL</b> 41 Brighton Road, Rhyl LL18 3HL	01745 353730	Mrs E Roose	Deborah Williams	37 *
<b>BRYN ESTYN</b> 85 Russell Road, Rhyl LL18 3DS	01745 353772	Mr J & Mrs K A Witherspoon	Mrs K A Witherspoon	24
<b>CARR HOLM</b> 41 Bastion Road, Prestatyn LL19 7ND	01745 887120	Mr P Mallows	Ms D A Chappell	22
<b>CARTREF</b> 44 East Parade, Rhyl LL18 3AW	01745 331355	Mr P & Mrs S Manley	Mrs S Manley	12
<b>CHESTERTON</b> Care Home, 2 Boughton Avenue, Rhyl LL18 3EW	01745 353168	J Roberts	Mrs P M Walley	18
<b>DOLANOG</b> 87 Russell Road, Rhyl LL18 3DS	01745 353355	The Trustees of Dolanog Residential Home	Mrs L Weale	31
<b>DYSERTH CARE (THE OLD MANOR)</b> Waterfall Road, Dyserth LL18 6DB	01745 570286	Ivan Goddard & Mair Eluned Goddard	Jane Ann Moroney	24
<b>GWYNANT</b> 7 Cwm Road, Dyserth LL18 1HS	01745 570523	Ivan Goddard & Mair Eluned Goddard	J A Moroney	14

\* Gall y Cartrefi hyn gymryd nifer fechan o bobl o dan 65 oed / These Homes may take a small number of people under 65

# Mae'r cartrefi hyn wedi cofrestru i nifer fach o bobl dros 65 oed / These homes are also registered for a small number of people over 65

ENW'R CARTREF	RHIF FFÔN	PERCHENNOG	RHEOLWR	COFRESTRWYD AR GYFER
NAME OF HOME	TEL NO	PROPRIETOR	MANAGER	REGISTERED FOR
<b>HIGHCROFT</b> 49 Highbury Avenue, Prestatyn LL19 7NT	01745 854764	Brenda Smyth & Mr J S Smyth	B Smyth	13
<b>LLANRHAEADR HALL</b> Llanrhaeadr, Nr Denbigh LL16 4NL	01745 890313	Mr Ian Paul Roberts	Mrs E A Bryan-Jones	36
<b>PARK LODGE</b> Llanerch Park, Trefnant, St. Asaph LL17 OBD	01745 730370	Mr M Costello & Mrs J Allen	Mrs J L Costello	17
<b>PINE TREE COURT</b> Arening, Ruthin Road, Denbigh LL16 3HA	01745 814370	Mr & Mrs Murray		8
<b>PLAS MELYD</b> 16 Ffordd Tanrallt, Meliden LL19 8PS	01745 854783	Plas Melyd Residential Home Ltd	Mrs L W Hulson	18
<b>PRIORY HOUSE LTD</b> The Priory, 61/63 Gronant Road, Prestatyn LL19 9LU	01745 852650	Priory House Ltd	Mrs C M Luke	29
<b>SANDFORD</b> 50 Gronant Road, Prestatyn LL19 9ND	01745 855193	Pearlcare (Sandford) Ltd	Kathleen Duffey	41
<b>ST. DAVIDS</b> 36 East Parade, Rhyl LL18 3AN	01745 353621	St. Davids Care Ltd	Miss C E Brown	52
<b>THE MEADOWS NURSING HOME</b> Fachwen Hall, Waen, St Asaph LL17 ODT	01745 583003	S & S Care UK	Stephanie Inglis	27
<b>THE NASH</b> 10/12 Churton Road, Rhyl LL18 3NB	01745 351598	Mr & Mrs S Sathiapal	Ms L Sefton	30
<b>THE OLD DEANERY</b> Deans Walk, St. Asaph LL17 ONE	01745 584109	Mr B T Mahon	Mrs L M Bowen	23
<b>THE OLD VICARAGE</b> Vicarage Road, Llangollen LL20 8HF	01978 861866	Mr A B & Mr D H Morris	Mrs B Morris	18
<b>TROSNANT</b> Park Road, Ruthin LL15 1NB	01824 704418	Mrs A Jones	Mrs A Jones	12
<b>VALE VIEW</b> 55 Vale Street, Denbigh LL16 3AP	01745 812044	Lyndhurst Ltd	Swaraj Mahadeo	10

\* Gall y Cartrefi hyn gymryd nifer fechan o bobl o dan 65 oed / These Homes may take a small number of people under 65

# Mae'r cartrefi hyn wedi cofrestru i nifer fach o bobl dros 65 oed / These homes are also registered for a small number of people over 65

ENW'R CARTREF	RHIF FFÔN	PERCHENNOG	RHEOLWR	COFRESTRWYD AR GYFER
NAME OF HOME	TEL NO	PROPRIETOR	MANAGER	REGISTERED FOR
<b>WALSHAW HOUSE</b> 2 Churton Road, Rhyl LL18 3NB	01745 334095	Mr G & Mrs S Lamb	Mrs S Lamb	20
<b>WALSHAW LODGE</b> 35 The Avenue, Woodland Park, Prestatyn LL19 9RD	01745 853347	Mr G L & Mrs S A Lamb	Mr & Mrs Lamb	14

## Cartrefi Awdurdod Lleol / Local Authority Homes

<b>AWELON</b> School Road, Ruthin LL15 1BN	01824 702018	Denbighshire C.C.	Carol Axon	30
<b>CYSGOD Y GAER</b> Maesfallen, Corwen LL21 9AE	01490 412394	Denbighshire C.C.	Sian Owen	30
<b>DOLWEN</b> Ruthin Road, Denbigh LL16 3ER	01745 812752	Denbighshire C.C.	Nest Vaughan Evans	30

\* Gall y Cartrefi hyn gymryd nifer fechan o bobl o dan 65 oed / These Homes may take a small number of people under 65  
 # Mae'r cartrefi hyn wedi cofrestru i nifer fach o bobl dros 65 oed / These homes are also registered for a small number of people over 65

ENW'R CARTREF	RHIF FFÔN	PERCHENNOG	RHEOLWR	COFRESTRWYD AR GYFER
NAME OF HOME	TEL NO	PROPRIETOR	MANAGER	REGISTERED FOR

## Henoed / Elderly

<b>VALLEY LODGE</b> Llanarman Road, Llanferres, Mold CH7 5TA	01824 780641	Robert Homes (North Wales Ltd)	Amanda J Scales	25
---	--------------	-----------------------------------	-----------------	----

<b>WHITEHOUSE (S)</b> Clwyd Avenue, Prestatyn, Denbighshire LL19 9NG	01745 853239	Mrs M K Kennedy	Mrs M K Kennedy	3
---	--------------	-----------------	-----------------	---

## Iechyd Meddwl / Mental Health

<b>3 BRYNFYNNON TERRACE</b> , Denbigh, LL16 3LN	01745 814372	Mental Health Care (Clwyd) Ltd	Clive Jones	3 *
---	--------------	-----------------------------------	-------------	-----

<b>2 GLAS FRYN</b> Henllan Street, Denbigh LL16 3PE	01824 790600	Mental Health Care (Clwyd) Ltd	Clive Jones	1 *
--	--------------	-----------------------------------	-------------	-----

<b>3 GLAS FRYN</b> Henllan Street, Denbigh LL16 3PE	01745 813804	Mental Health Care (Clwyd) Ltd	Clive Jones	2 *
--	--------------	-----------------------------------	-------------	-----

<b>GROVE HALL</b> Bodfari, Denbigh LL16 4DE	01745 710601	Mental Health Care (Grove Hall) Ltd	Malcolm Delamare	21 *
---	--------------	--	------------------	------

<b>HOLLAND HOUSE</b> 13 Lenton Pool, Denbigh LL16 3LG	01745 814372	Mental Health Care (Clwyd) Ltd	Clive Jones	11 *
--	--------------	-----------------------------------	-------------	------

<b>LLYS MARCHAN</b> 133 Mwrog Street, Ruthin LL15 1LE	01824 705060	Clwyd Alyn Housing Association	Nesta Yorke	10 * #
--	--------------	-----------------------------------	-------------	--------

<b>NORCOT</b> 17 Palace Avenue, Rhyl LL18 1HS	01745 354209	Innovative Care		10 *
--	--------------	-----------------	--	------

<b>Y GELLI</b> 61 Vale Street, Denbigh LL15 3AP	01745 813558	Vale of Clwyd MIND	Mr P Williams	10 *
--	--------------	--------------------	---------------	------

\* Gall y Cartrefi hyn gymryd nifer fechan o bobl o dan 65 oed / These Homes may take a small number of people under 65  
# Mae'r cartrefi hyn wedi cofrestru i nifer fach o bobl dros 65 oed / These homes are also registered for a small number of people over 65

ENW'R CARTREF	RHIF FFÔN	PERCHENNOG	RHEOLWR	COFRESTRWYD AR GYFER
NAME OF HOME	TEL NO	PROPRIETOR	MANAGER	REGISTERED FOR

## Anabledau Dysgu / Learning Disabilities

<b>6 ACCAR Y FORWYN</b> Link House, 6 Accar y Forwyn, Denbigh LL16 3PW	01745 815887	Anheddau Cyf	Ms J L Jones	3 *
<b>3 HIGHBURY AVENUE</b> Prestatyn LL19 7NR	01745 889179	Dorothy Olga Davies		4 *
<b>1 PINE COTTAGES</b> Highfield Park Llandyrnog, Nr Denbigh LL16 4LU	01824 792134	Mental Health Care UK Ltd	Miss Julie Wilson	1 *
<b>ASH</b> Highfield Park, Llandyrnog LL16 4LU	01824 790600	Mental Health Care (Highfield Park) Ltd	Marion Bryan	6 *
<b>BRYN DEDWYDD / BRYN EGWYL</b> 6 Chester Street, St. Asaph LL17 0RE	01745 584891	M.E.N.C.A.P.	Mrs J Tobin	12 *
<b>GALLTFAENAN HALL</b> Trefnant, Denbigh LL16 5AG	01745 730226	Mrs E Jones	Rachel Jones	39 *
<b>GRANGE CARE LTD</b> The Roe, St. Asaph, Denbighshire LL17 OLU	01745 585633	Grange Residential Care Ltd	Fiona Avril Green	12 *
<b>HIGHFIELD HOUSE/ THE LODGE</b> Highfield Park, Llandyrnog LL16 4LU	01824 790600	Mental Health Care (Highfield Park) Ltd	Amanda Kelly	9 * #
<b>HOLLY</b> Highfield Park, Llandyrnog LL16 4LU	01824 790600	Mental Health Care (Highfield Park) Ltd	Christian Bradford	8 *
<b>IVY COTTAGE HILLSIDE VIEW</b> Highfield Park, Llandyrnog LL16 4LU	01824 792129	Mental Health Care (Highfield Park) Ltd	Colin Jones	6 *
<b>LLYS NANT (S)</b> Park Street, Denbigh LL16 3DE	01745 815834	Kathryn Lynne Roberts	Mrs K Roberts	6 *

\* Gall y Cartrefi hyn gymryd nifer fechan o bobl o dan 65 oed / These Homes may take a small number of people under 65

# Mae'r cartrefi hyn wedi cofrestru i nifer fach o bobl dros 65 oed / These homes are also registered for a small number of people over 65

ENW'R CARTREF	RHIF FFÔN	PERCHENNOG	RHEOLWR	COFRESTRWYD AR GYFER
NAME OF HOME	TEL NO	PROPRIETOR	MANAGER	REGISTERED FOR
<b>LARCH/CHERRY</b> Highfield Park, Llandyrnog LL16 4LU	01824 790600	Mental Health Care (Highfield Park) Ltd	Janice Roberts	8 *
<b>LLEWENI</b> 16 Queens Walk, Rhyl, Denbighshire LL18 3NG	01745 337088	Mrs E Roberts	Maxine Buckley	11 *
<b>MAES TEG</b> Park Street, Denbigh LL16 3DE	01745 815834	Kathryn L Roberts	Mrs K Roberts	5 *
<b>ORCHARD VIEW</b> Highfield Park, Llandyrnog LL16 4LU	01824 792133	Mental Health Care (Highfield Park) Ltd	Colin Jones	6 * (inc 1 over age of 65)
<b>PENGWERN HALL</b> Sarn Lane, Rhuddlan LL18 5UH	01745 590281	M.E.N.C.A.P.	Mrs A Price	35 *
<b>ROSE HOUSE</b> Rose Cottage, Highfield Park, Llandyrnog LL16 4LU	01824 790600	Mental Health Care (Highfield Park) Ltd	Marion Bryan	3 *
<b>THE BEECHES CARE HOME</b> Highfield Park, Llandyrnog LL16 4LU	01824 792125	Mental Health Care UK Ltd	Mrs L Jones	6 *
<b>THE CHALET</b> The Roe, St. Asaph LL17 OLU	01745 584025	M.E.N.C.A.P.	Mrs J Tobin	6 *
<b>THE OLD RECTORY</b> Henllan Road, Trefnant, Denbigh LL16 5UF	01745 730844	Mrs E Adey Jones	Lowri Roberts	12 *

\* Gall y Cartrefi hyn gymryd nifer fechan o bobl o dan 65 oed / These Homes may take a small number of people under 65

# Mae'r cartrefi hyn wedi cofrestru i nifer fach o bobl dros 65 oed / These homes are also registered for a small number of people over 65

## Gofal Nyrsio Cyffredinol / General Nursing Care

ENW'R CARTREF	RHIF FFÔN/FFACS	PERSON(AU) COFRESTRE	PERSON Â GOFAL/ METRON	GWELYAU
NAME OF HOME	TEL/FAX NO	PERSON(S) REGISTERED	PERSON IN CHARGE/ MATRON	BEDS
<b>BRADSHAW MANOR</b> 2 Chester Street, Rhyl, Denbighshire LL18 3ER	01745 882010	Barchester Healthcare Homes Ltd	Mrs H J Crompton	66 *
<b>BRYN CWYBR</b> Rhyl Road, Rhuddlan, Rhyl, Denbighshire LL18 2YD	01745 590372	European Care (Cymru) Ltd		27
<b>FRON YW NURSING HOME</b> Llandyrnog, Nr Denbigh, Denbighshire LL16 4LU	01824 790403	Vron Iw Ltd	Susan Murphy	25
<b>HAFOD-Y-GREEN</b> (Head Injury Rehabilitation & Nursing Centre) Trefnant, LL16 4UN	01745 730555	David Wynne	Elin Mari Kellett	34 *
<b>LLANGOLLEN FECHAN</b> Holyhead Road, Llangollen, Denbighshire LL20 7PR	01978 861551	Llangollen Fechan Ltd	Elizabeth Anne Anderson	30
<b>MAES ELWY NURSING HOME</b> Upper Denbigh Road, St Asaph, Denbighshire LL17 0BG	01745 730814	Southern Care Group Ltd	Catrin E Pritchard	29 *
<b>THE MEADOWS NURSING HOME</b> Fachwen Hall, Waen, St Asaph, Denbighshire LL17 0DT	01745 583003	S & S Care (UK) Ltd	Stephanie Inglis	27
<b>PLAS GWYN NURSING HOME</b> Llanychan, Ruthin, Denbighshire LL15 1TY	01824 702776	Mr A C D Pelladoah		30
<b>PRESWYLFA NURSING HOME</b> 20 Russell Road, Rhyl, Denbighshire LL18 3DD	01745 356258	European Care (Cymru) Ltd	Mrs D L Dobson	70
<b>ST CHAMOND'S NURSING HOME</b> Bishopswood Road, Prestatyn, Denbighshire LL19 9PW	01745 854130	Mr C & Mrs E Mascarenhas	Mrs M E L Mascarenhas	20

\* Gall y Cartrefi hyn gymryd nifer fechan o bobl o dan 65 oed / These Homes may take a small number of people under 65

# Mae'r cartrefi hyn wedi cofrestru i nifer fach o bobl dros 65 oed / These homes are also registered for a small number of people over 65

ENW'R CARTREF	RHIF FFÔN/FFACS	PERSON(AU) COFRESTRE	PERSON Â GOFAL/ METRON	GWELYAU
NAME OF HOME	TEL/FAX NO	PERSON(S) REGISTERED	PERSON IN CHARGE/ MATRON	BEDS

## Henoed gyda Salwch Meddwl / Elderly Mentally Ill

<b>BRYN DERWEN</b> Bryn Gobaith, St. Asaph LL17 ODE	01490 420554	Mrs D Gittins	Mrs M Spencer	20
<b>CANTERBURY HOUSE</b> 77 Dyserth Road, Rhyl, Denbighshire LL18 4DT	01745 336511	European Care (Cymru) Ltd	Richard A Mark	59 *
<b>CARTREFLE</b> 22 Palace Avenue, Rhyl LL18 1US	01745 350011	Marys Vale Ltd	Mrs R Davies	19
<b>GLEN DEVON</b> 2/4 The Grove, Rhyl LL18 3NE	01745 351349	Mr P A Quarrell &	Veronica A Longdon	28 *
<b>GRASMERE</b> 2 Linden Drive, Prestatyn LL19 9EH	01745 853404	Michael Roberts	Beverley Francis Covell	20
<b>THE HEADLANDS NURSING HOME THE HEADLANDS/DEEVALE CARE HOME</b> Tower Road, Llangollen, Denbighshire LL20 8TE	01978 861592	Mr Keith Roberts	Olwen Lloyd Hughes	29 *
<b>LLYS MEDDYG NURSING HOME</b> Station Road, Denbigh, Denbighshire LL16 3DA	01745 813944	Mr J D Roberts	Robert Allan	18
<b>PLAS ELERI CARE HOME</b> Rhyl Road, Denbigh, Denbighshire LL16 5SU	01745 814613	Plas Eleri Care Home Ltd	Emma L Jones	35 *
<b>SANDY LODGE</b> 83 Dyserth Road, Rhyl, Denbighshire LL18 4DT	01745 338014	European Care (Cymru) Ltd	David Carter Smith	36 *

## Oedolion hefo Anableddau Psychiatrig/Cyflwr Iechyd Meddwl Adults with Psychiatric Disorders/Mental Health Conditions

<b>MINFFORDD</b> 82 Vale Street, Denbigh, Denbighshire LL16 3BW	01745 812881	European Lifestyles Ltd	James McDonald	33 * #
--	--------------	-------------------------	----------------	--------

\* Gall y Cartrefi hyn gymryd nifer fechan o bobl o dan 65 oed / These Homes may take a small number of people under 65  
# Mae'r cartrefi hyn wedi cofrestru i nifer fach o bobl dros 65 oed / These homes are also registered for a small number of people over 65

ENW'R CARTREF	RHIF FFÔN/FFACS	PERSON(AU) COFRESTRE	PERSON Â GOFAL/ METRON	GWELYAU
NAME OF HOME	TEL/FAX NO	PERSON(S) REGISTERED	PERSON IN CHARGE/ MATRON	BEDS
<b>PLAS COCH</b> Rhyl Road, St Asaph, Denbighshire LL17 0HU	01745 583528	Mental Health Care (Plas Coch) Ltd	Dafydd Lewis	24
<b>PLAS Y MOR NURSING HOME</b> 30-31 East Parade, Rhyl, Denbighshire LL18 3AL	08701 609328	Sapphire Streams Ltd	Mr G W Williams	37 * #

## Hospis Preifat ar gyfer Gofal Lliniarol Private Hospice for Palliative Care

<b>ST KENTIGERN HOSPICE</b> 01745 585221 Upper Denbigh Road, St Asaph, Denbighshire LL17 0RS	St Kentigern Association (Lady S Langford & Mr D Owen)	Mrs C A Howarth	8 + 15 Day Places
--	--	-----------------	----------------------

## Asiantaethau Gofal Cartref / Domiciliary Care Agencies

ENW'R ASIANTAETH	RHIF FFÔN/FFACS	E-BOST	CYSWLLT	GRWP CLIENT
AGENCY NAME	TEL/FAX NO	E-MAIL	CONTACT	CLIENT GROUP
<b>ALLIED HEALTH CARE</b> Unit C, Station Building, Bodfor Street Rhyl, Denbighshire LL18 1AT	01745 350001 01745 345101	prestatyn@alliedhealthcare.com	Sharon Jones Lynette Hughes	Learning Disabilities Physical Disabilities Sensory Impairment
<b>ANHEDDAU CYF</b> 6 Llys Britannia, Parc Menai, Bangor, Gwynedd LL57 4BN	01248 675910	post@anheddau.com	Sharon Burke Susan Hart	Learning Disabilities Mental Health Physical Disabilities Sensory Impairment Elderly Mental Infirm Older People
<b>CAMBRIAN HOMECARE</b> 2 Morlan Park, Rhyl, Denbighshire LL18 3EG	01745 334510 08707 058797	peter.jones@ cambrianhomecare.co.uk	Peter Jones Shirley Jones	Mental Health Physical Disabilities Sensory Impairment Elderly Mental Infirm Older People

\* Gall y Cartrefi hyn gymryd nifer fechan o bobl o dan 65 oed / These Homes may take a small number of people under 65  
# Mae'r cartrefi hyn wedi cofrestru i nifer fach o bobl dros 65 oed / These homes are also registered for a small number of people over 65

ENWR ASIAN TAETH	RHIF FFÔN/FFACS	E-BOST	CYSWLLT	GRWP CLIENT
AGENCY NAME	TEL/FAX NO	E-MAIL	CONTACT	CLIENT GROUP
<b>CARENZA CARE</b> James Building, 4a Rhuddlan Road, Rhyl, Denbighshire LL18 2PW	01745 354554 01745 355636	carenzacare@btconnect.com	Laura Barron	Physical Disabilities Sensory Impairment Drugs and Alcohol Older People Elderly Mental Infirm
<b>CARTREF NI LTD</b> Old Bank Chambers, High Street, St Asaph, Denbighshire LL17 ORD	01745 584527	admin@cartrefni.com	Roger Bruce	Learning Disabilities Older People Physical Disabilities Sensory Impairment
<b>CELTIC CARE NORTH</b> 3a Central Precinct, Brunswick Road, Buckley, Flintshire CH7 2EF	01244 540940 01244 549913	holywell.medico@medico.co.uk	Samatha Edwards	Physical Disabilities Learning Disabilities Older People Sensory Impairment
<b>COMMUNITY SUPPORTED LIVING LTD</b> 384 Laird Street, Birkenhead CH41 7AL	0151 652 9292 0151 652 8436	head.office@communitysupportedliving.co.uk	Terrance Hill	Mental Health
<b>DEEVALE HOMECARE &amp; SERVICES LTD</b> Ebenezer Chapel, Crane Street, Cefn Mawr, Wrexham LL14 3AB	01978 821938	deevale@btconnect.com	Lynne Kent Keith Roberts Mental Health  Older People	Learning Disabilities Physical Disabilities  Sensory Impairment
<b>DYFFRYN CARE</b> Gerlwyn, 83 Grange Road, Rhyl, Denbighshire LL18 4BT	01745 345055 01745 337400	mariedeeney@hotmail.co.uk	Sion Hayes	Learning Disabilities
<b>HIGHBURY CARE SERVICES</b> The Old Surgery, Prior Lane, Prestatyn, Denbighshire LL19 9HQ	01745 886547 01745 851800	highburycare@btconnect.com	Phil Davies	Learning Disabilities Mental Health Physical Disabilities Sensory Impairment
<b>INCLUSIVE LIFESTYLES</b> Suite B1A, The Quadrant, Mercury Court, Chester CH1 4QR	01244 651961	m.bland@thecareplan.com		Learning Disabilities Mental Health Physical Disabilities Sensory Impairment Acquired Brain Injury
<b>JANE LEWIS NURSING AGENCY</b> Unit 22, St Asaph Business Park, Ffordd Richard Davies, St Asaph, Denbighshire LL17 0LJ	01745 585577 08707 598388	scooper@janelewisnursing.com	Sandra Cooper	Older People Learning Disabilities Physical Disabilities Mental Health Sensory Impairment Children and Families

ENW'R ASIAN TAETH	RHIF FFÔN/FFACS	E-BOST	CYSWLLT	GRWP CLIENT
AGENCY NAME	TEL/FAX NO	E-MAIL	CONTACT	CLIENT GROUP
<b>MICHAEL PHILIPS AGENCY</b> 30-32 Kinmel Street, Rhyl, Denbighshire LL18 1AN	01745 350923 01745 344833	enquiries@ michaelphillipsagency.co.uk	Karen Hughes	Older People Elderly Mental Infirm Physical Disabilities Sensory Impairment
<b>O.C.S. CARE AGENCY</b> Abergele Day Centre, Rhuddlan Road, Abergele, Conwy LL22 7HF	01745 824162 01745 824209	ocscare@ocscare.co.uk	Mike Rose	Physical Disabilities Sensory Impairment Elderly Mental Health Older People
<b>PREMIER HOMECARE NORTH WALES LTD</b> Pinfold House, Pinfold Lane, Alltami, Mold, Flintshire CH7 6NZ	01244 544442 01244 544449	jean@phnw.co.uk	Gill Charlick Jean Maycock	Older People Learning Disabilities Physical Disabilities Sensory Impairment Mental Health
<b>PROCARE WALES LTD</b> Kinmel Place, 54-56 Kinmel Street, Rhyl, Denbighshire LL18 1AW	01745 369005 01745 342523	enquiries@procarewales.co.uk	Helen Shepherd	Learning Disabilities Physical Disabilities Sensory Impairment Older People Children and Families
<b>Q' CARE &amp; SPECIAL CARE LTD</b> 2b Sandy Lane, Prestatyn, Denbighshire LL19 7SG	01745 851310 01745 851340	annemarie@qcare.org.uk	Anne-Marie Ostanek	Physical Disabilities Sensory Impairment Mental Health Elderly Mental Health
<b>TROSNANT COMMUNITY CARE</b> Trosnant Residential Home, Park Road, Ruthin, Denbighshire LL15 1NB	01824 704418 01824 707889	trosnant3@tiscali.co.uk	Anne Jones	Older People
<b>TY AR Y BRYN</b> Bron Haul, Henllan Place, Denbigh, Denbighshire LL16 3TN	01745 813761	yvonneterion@aol.com	Yvonne Lloyd	Physical Disabilities Sensory Impairment
<b>WYNNE COMMUNITY CARE SERVICES</b> 26-27 Maes y Coed, Denbigh, Denbighshire LL16 3ED	01745 813139	wynnecare@tiscali.co.uk	Sandra Lloyd	Learning Disabilities

# Domiciliary Providers

ENWR ASIAN TAETH	RHIF FFÔN/FFACS	E-BOST	CYSWLLT	GRWP CLIENT
AGENCY NAME	TEL/FAX NO	E-MAIL	CONTACT	CLIENT GROUP
<b>ALLIED HEALTHCARE</b> Allied Healthcare North Wales, 1 Mostyn Road, Colwyn Bay LL29 8PB	01492 533620 01492 534556	northwales@alliedhealthcare.com	Charlotte Hunt	Older People Physical Disabilities Sensory Impairment Mental Health Learning Disabilities Elderly Mental Infirm
<b>ALWAYS THERE HOME CARE</b> 196 Edleston Road, Crewe, Cheshire CW2 7EP	01270 252825 01270 583134	info@alwaystherehomecare.co.uk	Steve Brookes	Learning Disabilities Mental Health Physical Disabilities Sensory Impairment Elderly Mental Infirm Older People
<b>AMG NURSING &amp; CARING SERVICES</b> Bridge House, 15 Bridge Road, Wellington, Shropshire TF1 1EB	01952 243817 01952 243819	amgtelford@btconnect.com	Angie Sexton	Older People Elderly Mental Health Learning Disabilities Physical Disabilities Sensory Impairment Mental Health
<b>CALON LAN COMMUNITY CARE</b> 8 Vaughan Street, Llandudno, Conwy LL30 1AB	01492 860444 08452 808400	info@calonlan.org.uk	Lucie Williams	Physical Disabilities Sensory Impairment Older People
<b>CARING HANDS</b> Unit 3 Victoria Buildings, Mostyn Avenue, Craig-y-Don, Llandudno, Conway LL30 1YU	01492 860830	caringhandshomecare@btconnect.com	Rebecca Louise Evans	Older People Physical Disabilities Sensory Impairment Learning Disabilities Elderly Mental Infirm Mental Health
<b>CARTREFI CYMRU</b> 28-34 Dean Street, Bangor, Gwynedd LL57 1UR	01248 360004 01248 363155	ann.lloydlewis@cartreficymr.org	Ms Ann Lloyd Lewis	Learning Disabilities
<b>CLAIMAR CARE</b> Claimar Care Flintshire Branch Cadet House, High Street Connahs Quay CH5 4DR	08450 171234 01244 846362	g.paterson @claimar.co.uk	Steve Williams	Older People Learning Disabilities Mental Health Physical Disabilities Sensory Impairment Elderly Mental Infirm

ENW'R ASIANTAETH	RHIF FFÔN/FFACS	E-BOST	CYSWLLT	GRWP CLIENT
AGENCY NAME	TEL/FAX NO	E-MAIL	CONTACT	CLIENT GROUP
<b>COASTAL HOMECARE</b> Unit 3, Tai Tywyn Business Centre, Sandy Lane, Prestatyn LL19 7SF	01745 859474 01745 859474	coastalhomecare@btconnect.com	Karen Owen Robin Owen	Older People Elderly Mental Health Mental Infirmity
<b>COMPLETE CARE &amp; ENABLING SERVICES LTD</b> Station House, Holywell Junction, Station Road, Greenfield Flintshire CH8 7EL	01352 711465/ 710929 01352 711213	diane.roberts16@btinternet.com	Diane Roberts	Learning Disabilities Physical Disabilities Sensory Impairment
<b>CYMRYD RHAN</b> Wellfield House, Temple Street, Llandrindod Wells, Powys LD1 5HG	01597 828050 01597 828059	jane.edwards@cymryd-rhan.org	Pamela Coleman	Physical Disabilities Sensory Impairment Learning Disabilities Older People Elderly Mental Infirm
<b>D&amp;M PREMIER CARE AGENCY LTD</b> Tyn y Mynydd Llanarmon Yn Lal, Mold, Denbighshire CH7 4QH	07812 598830	ma.rowlands@gmail.com	Mark Rowlands	Mental Health
<b>FOCUS CARE WALES Ltd</b> Connaught House, Riverside Business Park, Benarth Road, Conwy LL32 8UB	01492 573704 01492 818101	info@focuscarewales.co.uk	Denise Picton	Learning Disabilities Physical Disabilities Sensory Impairment
<b>HAPPY HOMES</b> Button Cottage, Rosemary Lane, Burton, Nr Rossett, Wrexham LL12 0LA	01244 571650 01244 571650	happyhomes@uwclub.net	Anne-Marie Stott	Older People Learning Disabilities Physical Disabilities Sensory Impairment Mental Health Elderly Mental Health
<b>K L CARE LTD</b> Office No 5, Hanover Business Centre, The Roe, St Asaph LL17 0TL	01745 530050 05603 125909	klcare@vodafone.net	Karen Wylie	Physical Disabilities Sensory Impairment Elderly Mental Infirm Older People Learning Disabilities

ENW'R ASIAN TAETH	RHIF FFÔN/FFACS	E-BOST	CYSWLLT	GRWP CLIENT
AGENCY NAME	TEL/FAX NO	E-MAIL	CONTACT	CLIENT GROUP
<b>MENCAP</b> Unit 4 Deeside Enterprise Centre, Rowleys Drive, Shotton, Deeside CH5 1PP	01244 816217 01244 814160	carol.molyneaux@mencap.org.uk	Carol Molyneaux	Learning Disabilities Older People Physical Disabilities Sensory Impairment
<b>RADIS COMMUNITY CARE</b> 12 Longbow Close, (Off Harlescott Lane) Shrewbury SY1 3GZ	01743 464458 01743 467294	shrewsbury@GPHomecare.co.uk	Daniel Frater	Learning Disabilities
<b>REGARD PARTNERSHIP (THE)</b> Cerrig Cornel, Llanegryn Tywyn, Gwynedd LL36 9SA	01654 711801 01654 711801	domcareagency.nthwales@ regard.co.uk	Stuart Marsh John Farragher	Learning Disabilities
<b>S&amp;S CARE (UK) LTD</b> Suite 7, Brynestyn Business Centre, Brynestyn Road, Wrexham LL13 9TY	01978 351722 01978 352923	gaynorjones44@hotmail.co.uk	Gaynor Jones Emma Hill	Older People Physical Disabilities Sensory Impairment Mental Health Learning Disabilities Elderly Mental Infirm
<b>SEASHELLS CARE &amp; SUPPORT SERVICES</b> 23 Mostyn Avenue, Craig Y Don, Llandudno LL30 1YS	01492 874075 01492 874075	seashellsLtd@aol.com	Stuart Owen	Learning Disabilities Older People
<b>SUPPORTA CARE</b> Regis House, 223 Halesowen Road, Cradley Heath, West Midlands B64 6JE	0161 480 2158 07966 162310 0161 480 2158	debbie.fielding@supportapl.com	Debbie Fielding	Learning Disabilities Mental Health Physical Disabilities Sensory Impairment Elderly Mental Health
<b>TREHERE NE CARE</b> Clogwyn, Cader Road, Dolgellau, Gwynedd LL40 1TA	01341 280824 01341 282017	enquiries@trehernecaregroup.com	Dawn Mercer Patty Morris	Learning Disabilities Mental Health
<b>VERYTAS SOLUTIONS LTD</b> 22 Deeside Enterprise Centre, Rowley's Drive, Shotton, Flintshire CH5 1PP	08444 780501 08717 145713	admin@verytas.net	Judith Thomas	Physical Disabilities Sensory Impairment Mental Health Learning Disabilities Older People Acquired Brain Injury



# Taking the worry out of paying for care

Our specialist care fees advisers can help you to:

- ◆ Arrange your finances to meet care costs over the long term.
- ◆ Understand your entitlement to local authority, health authority or state benefits.

For over 15 years we have helped thousands of individuals and their families gain peace of mind in meeting the cost for the care of their choice whilst also preserving as much capital as possible.

**For expert advice on all aspects of paying for care or a free copy of our long term care guide, call our care fees advice line.**

Tel: 0800 99 88 33\* • [www.nhfa.co.uk](http://www.nhfa.co.uk)

Opening hours Mon - Fri 8am-7pm Sat 8am-2pm\*. For quality purposes calls may be monitored and/or recorded.

NHFA Limited is authorised and regulated by the Financial Services Authority. Registered in England and Wales. Registration No.04620891

AC12723

Member HSBC  Group

**nhfa**  
Care Fees Advice



**Cyngor Gofal Cymru**  
Care Council for Wales

*Hyder mewn Gofal - Confidence in Care*

Cysylltwch â Chyngor Gofal Cymru am gopiâu o'r Côd neu am wybodaeth bellach.

Ffôn: 0845 070 9633  
E-bost: [codau@ccwales.org.uk](mailto:codau@ccwales.org.uk)  
[www.ccwales.org.uk](http://www.ccwales.org.uk)

Contact the Care Council for Wales for copies of the Code or further information.

Tel: 0845 070 9633  
E-mail: [codes@ccwales.org.uk](mailto:codes@ccwales.org.uk)  
[www.ccwales.org.uk](http://www.ccwales.org.uk)

## Oes gennych chi hyder mewn gofal?

Ydych chi'n gwybod bod Côt Ymarfer i weithwyr gofal cymdeithasol?

Darganfyddwch beth mae'n ei olygu i **CHI!**

Mae'r Côt yn pennu safonau eglur y disgwylir gan bob gweithiwr yn y sector gofal cymdeithasol, ac yn eich helpu chi i ddeall sut ddylen nhw weithio gyda chi.

## Do you have confidence in care?

Do you know there's a Code of Practice for social care workers?

Find out what it means for **YOU!**

The Code sets out the clear standards expected of all workers in the social care sector and helps you understand how they should work with you.



**HYDER MEWN  
GOFAL  
CONFIDENCE  
IN CARE**

Noddir gan  
Lywodraeth Cynulliad Cymru  
Sponsored by  
Welsh Assembly Government

