

Conwy & Denbighshire Community Safety Partnership

Strategic Assessment

2011/12



Author: Matthew Stewart

Email: matthew.stewart@nthwales.police.pnn.uk

Contents

Summary

1.0 Introduction

2.0 Analysis

2.1 An overview of our area

2.2 An overview of crime in our area

2.3 Public perception of crime and antisocial behaviour

2.4 Violent crime

2.5 Serious acquisitive crime

2.6 Domestic crime

2.7 Victims of crime

2.8 Antisocial behaviour

2.9 Offenders and reoffending

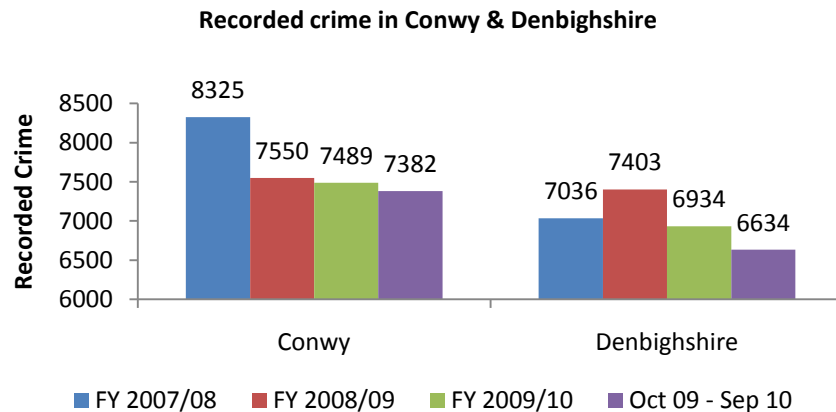
2.10 Substance misuse

2.11 Preventing violent extremism

3.0 The priority areas and outcomes

Summary – A Safer Conwy & Denbighshire

Conwy and Denbighshire are both increasingly safe places to live. Recorded crime has fallen by 11.3% in Conwy and 5.7% in Denbighshire since 2007/08.



Although levels of recorded crime have fallen the public's perception of crime and disorder has remained a priority.

The outcomes we are trying to achieve

The overall aim of the Conwy and Denbighshire Community Safety Partnerships are to remain unchanged. We will continue to work towards the outcomes for the residents on Conwy & Denbighshire;

- Reduce the level of crime
- Reduce the level of ASB
- Make Conwy and Denbighshire feel a safe place to live

Our future priorities

The areas that we are going to prioritise for 2011/12 are;

- Reduce crime and the impact on the community
- Effectively tackle domestic crime
- Effectively tackle ASB and behaviour adversely affecting the environment
- Reduce reoffending
- Reduce harm caused by alcohol and substance misuse

How we arrived at these priorities

Our priorities for 2011/12 have been identified by gathering a broad range of information from a wide range of partners and using this as an evidence base for a detailed strategic assessment.

Summary – A Safer Conwy & Denbighshire

Key facts about crime and disorder in Conwy & Denbighshire

Some key facts about crime and disorder which were established as part of this assessment, and which lead to the selection for the priorities.

- The level of crime in Conwy and Denbighshire is above the average level seen in other areas deemed to be similar in nature in England and Wales.
- Conwy and Denbighshire both are increasingly safe places to live. Recorded crime has fallen by 11.3% in Conwy and 5.7% in Denbighshire since 2007/08.
- 27.7% of crime in Conwy and Denbighshire is violent crime.
- There has been a positive reduction in serious acquisitive crime in Denbighshire with a 25.4% reduction since 2008/9. While in Conwy it has increased in the last 12 months 7.4% compared to 2009/10.
- There were 12,736 incidents of ASB in Conwy and Denbighshire reported to North Wales Police between Oct 09 and Sep 10, a 2.0% reduction compared to 13,002 in 2009/10
- Domestic crime has risen in both counties with a 15.4% increase in Conwy and a 47.7% increase in Denbighshire since 2008/09.
- Offenders are predominantly male, 79.9%, with a peak age of 19 years old for both males and females.

What progress have we made?

The Conwy and Denbighshire Community Safety Partnerships have contributed to reductions in recorded crime that exceed reductions seen nationally and in Wales.

The Partnership has implemented many initiatives to reduce crime, tackle re-offending and support victims of crime to make Denbighshire a safer place. These initiatives have contributed to recorded crime falling in Denbighshire by 14.7% and 21.4% in Conwy between 2006/07 and 2009/10, with 1133 and 1923 fewer crimes respectively.

Target hardening, alley gates and crime prevention initiatives have led to a 25.5% reduction in criminal damage in Denbighshire and 31.1% in Conwy between 2007/08 and 2009/10, with 438 and 805 fewer incidents of criminal damage respectively.

Substance misuse has a significant impact on the community affecting crime and the number of people not in education, employment or training. The substance misuse action team has increased the number of people referred to structured treatment because of substance misuse in Denbighshire by 195.3% and 178.6% in Conwy between 2007/8 and 2009/10, with 461 and 359 more referrals respectively.

1. Introduction

Our statutory obligation

As a Community Safety Partnership we have a statutory duty to work with local agencies and organisations to develop and implement strategies to tackle crime and disorder adversely affecting the local environment, as well as the misuse of drugs in our area.¹

As part of these statutory duties the Home Office require each Community Safety Partnership to:

- Undertake an annual strategic assessment of crime, disorder and anti-social behaviour.
- Produce a three year partnership plan which is refreshed annually based on the findings of the strategic assessment.

Our partnership plan was initially developed for the period 2008-11, in line with the period of the Governments spending review.

As we work towards the end of the 2008-11 period this strategic assessment seeks to set out the new priorities on which to base a new three year plan for 2011-14.

Why have we undertaken a strategic assessment?

¹ Crime and Disorder Act 1998 as amended by s97 & s98 Police Reform Act 2002 and s1, Clean Neighbourhoods & Environment Act 2005

We have undertaken this strategic assessment as the first stage in our planning process, to ensure we target our future activities and resources appropriately.

Crime in Conwy and Denbighshire has fallen by 11.3% and 5.7% since 2007/08, respectively. This downward trend reflects the performance seen nationally where recorded crime is now at its lowest level since 1981. Generally, residents of Conwy and Denbighshire feel safe, and their perception of crime and anti-social behaviour continues to improve.

However, some people and some places in Conwy and Denbighshire continue to suffer disproportionately from crime and fear of crime. In order for us to continue to make progress we, as the Community Safety Partnership, must build upon the achievements already made and target those issues of greatest significance for communities in Conwy and Denbighshire.

How have we undertaken this assessment?

We have collated and interpreted information collected from partner organisations and residents across Conwy and Denbighshire County with regard to crime and fear of crime. We have used this information as an evidence base to inform our strategic priorities and future service delivery.

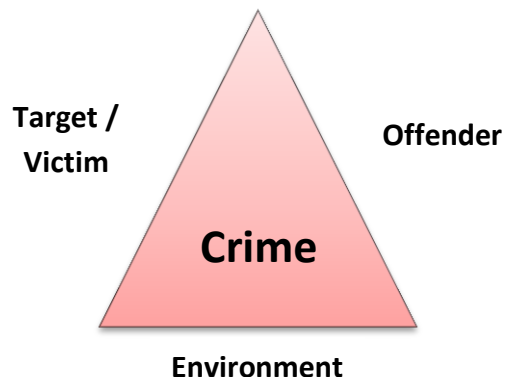
We have analysed and presented all the information that we gathered by grouping it into categories of crime. We have then

1. Introduction

decided whether a crime category or area of activity should be a strategic priority for the Community Safety Partnership by reviewing all the information.

In order to understand how to address each priority and identify the most appropriate strategies for 2011/12 we must understand the key drivers. A widely used method of assessing criminal activity is the problem analysis triangle. The problem analysis triangle is based on the fact that a crime occurs when:

- A suitable **victim / target** is available.
- A likely and motivated **offender** is present.
- The target and offender come together in a particular **environment**, at the same time and place without a guardian present.



In our action plans we will use the key information that we have gained through this assessment and link it to the problem analysis

triangle. By noting whether our actions relate to the target, offender, or the environment in which a particular crime or incident occurs we can ensure our resources are targeted appropriately.

This assessment is not intended to be a comprehensive analysis of each type of crime but will provide us with a guide of where we should focus our attention. When we implement our future strategies we will further develop our analysis to ensure that initiatives are correctly targeted, and that we make best use of our resources.

1. Introduction

What will the outputs of this assessment be?

- A summary of the **key issues** facing Conwy and Denbighshire relating to crime and disorder.
- The **outcomes** we are trying to achieve as a Community Safety Partnership.
- The **indicators** that will help us to recognise when we have achieved our **outcomes**.

Lessons learnt

The partnership targets were originally chosen in 2007/08 with the intention of directly influencing the priority areas however the experience of the last 3 years has shown that there is a need for outlining **outcomes** and **indicators** separately.

Outcomes will be the strategic goals of the partnership which will align with those of the partner agencies e.g. a reduction in recorded crime, part of North Wales Police Policing Priorities.

There will be an action plan for each **outcome** which will use the **indicators** as a guide to performance. The actions should address the key issues identified within the assessment, setting out the short term objectives the partnerships will aim to achieve to contribute towards the **outcomes**.

2.1 An overview of our area

Conwy²

Conwy County Borough (Conwy CB) is centrally located in North Wales. The County Borough has an area of 113,000 hectares and a population of 112,000 residents (mid-2008 estimate). About 38% of its area and 4% of its population are within the Snowdonia National Park.

Conwy CB is an area of outstanding landscape ranging from extensive sandy beaches and headlands to sheltered valleys, open moors and rugged mountains. Not surprisingly, its economy relies heavily upon tourism. Industrial employment, although limited and mainly near the coast, includes renowned manufacturing and research concerns. Rural areas and their communities are dependent on agricultural and forestry activities, even though these sectors do not provide a high level of direct employment.

The narrow coastal belt contains over 80% of the County Borough's population with Llandudno and Colwyn Bay as the two main urban areas. Llandudno is a major resort and also a regional shopping and cultural centre. Colwyn Bay is now a modest resort but is an increasingly important commercial and business centre. Other significant settlements are Abergele, Conwy, Kinmel Bay, Towyn, Llandudno Junction, Penmaenmawr, Llanfairfechan and Penrhyn Bay.

² An Area Profile for Conwy County Borough – October 2009

Rural Conwy CB is an attractive, mainly agricultural area with limited alternative employment and few development pressures. Its population is widely dispersed and is predominantly Welsh speaking. The main settlements are the market town of Llanrwst and the scattered villages of Betws-y-Coed, Betws yn Rhos, Eglwysbach, Llanfairtalhaiarn, Llansannan, Llangernyw, Pentrefoelas and Cerrigydrudion. The principal means of access to, from and within Conwy CB are the A55 coast road (Euroroute E22), the parallel railway from Manchester and London to Holyhead, and the A5 road to the south. The A470 provides a north-south road link which is paralleled by a railway linking Llandudno Junction to Blaenau Ffestiniog. The A543, A544 and A548 provide access to the large rural area lying to the east of the River Conwy.

Conwy County Borough is not a self-contained unit and relates to surrounding areas in a variety of different ways. Specifically, the hub of Llandudno Junction, Llandudno and Conwy town has been identified as occupying a strategic position in North Wales³, connecting the east and west, and acting as a retail, service and employment centre for a large hinterland. This is recognised in the Wales Spatial Plan as parts of the County Borough are in three different Plan areas; namely the North West, Central and North East Wales areas.

³ People, places, futures: the Wales Spatial Plan, National Assembly for Wales 2004.

2.1 An overview of our area

The population at mid year 2008 was 112,000 residents with more deaths than births in Conwy every year the population growth comes from in-migration. The population of the County Borough does not replace itself naturally. With deaths over a ten year period at an average of 1,610 per annum and births at just 1,080⁴ the population of Conwy would decrease by around 530 persons per year if there were no net in-migration into the area. At over 27% of the population, Conwy has the largest proportion of post-retirement age residents in Wales.

Many of the areas of greatest population growth between 2001 and 2008 are concentrated along the coast: Rhiw, Kinmel Bay, Abergele Pensarn, Towyn and Llysfaen all saw population increases of over 5%. Surprisingly, the greatest increase in population was in the rural ward of Betws-y-Coed (8.3%). Areas declining in population during this period are mainly rural wards. Trefriw, Eglwysbach and Uwch Conwy all experienced a decrease in population⁵.

Only slightly more than half of the population of the County Borough were born in Wales (54%). This in part accounts for the relatively low proportion of the population who are able to speak

⁴ Components of population change (mid year population estimates), Office for National Statistics

⁵ Small area population estimates (experimental statistics), Office for National Statistics

Welsh when compared to the neighbouring districts to the West. However, 29% of the population aged 3 years old or over are Welsh speakers – considerably above the all-Wales figure of 20.5%. Ability to speak Welsh is most prevalent amongst those of school age (49.5% of 5-15 year olds can speak Welsh).

In general, the incidence of both Welsh speakers and those born in Wales increases towards the west, and as one travels inland from the more highly populated coastal strip. Ability to speak Welsh is at a peak in the rural southern ward of Uwchaled (74% Welsh speaking), and at its lowest in the eastern coastal community of Towyn & Kinmel Bay (less than 11%)⁶.

Denbighshire⁷

Denbighshire covers an area which runs south from the North Wales coastal resorts of Rhyl and Prestatyn. There are about 100,000 people living in Denbighshire. The National Statistics area classification of the local authority is: Coastal and Countryside.

Principal towns include Denbigh, Llangollen, Prestatyn, Rhyl and Ruthin.

Denbighshire is largely a rural authority, with tourism, agriculture and manufacturing the main employment sectors. There are

⁶ 2001 Census of Population, Office for National Statistics

⁷ Denbighshire Local Area Profile – April 2010

2.1 An overview of our area

several small industrial parks or estates supporting light industry. Ysbyty Glan Clwyd is the area's general hospital located near Rhyl.

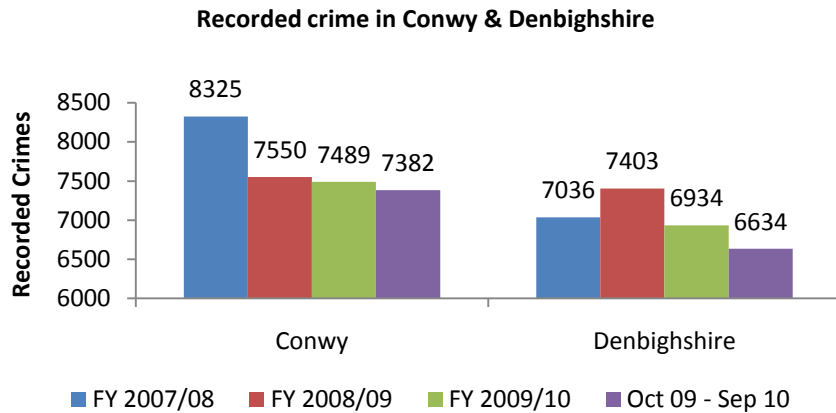
Around a quarter of the overall population speaks Welsh but this rises to over 60% in some rural areas. Denbighshire has a lower proportion people of working age and a higher proportion of people of retirement age than Wales as a whole.

The five Welsh local authorities which are most similar to Denbighshire for a range of demographic and socio-economic data are Conwy, Gwynedd, Isle of Anglesey, Pembrokeshire and Powys. These have been identified using the Data Unit's online statistical model.

2.2 An overview of crime in our area

Levels of crime in Conwy and Denbighshire

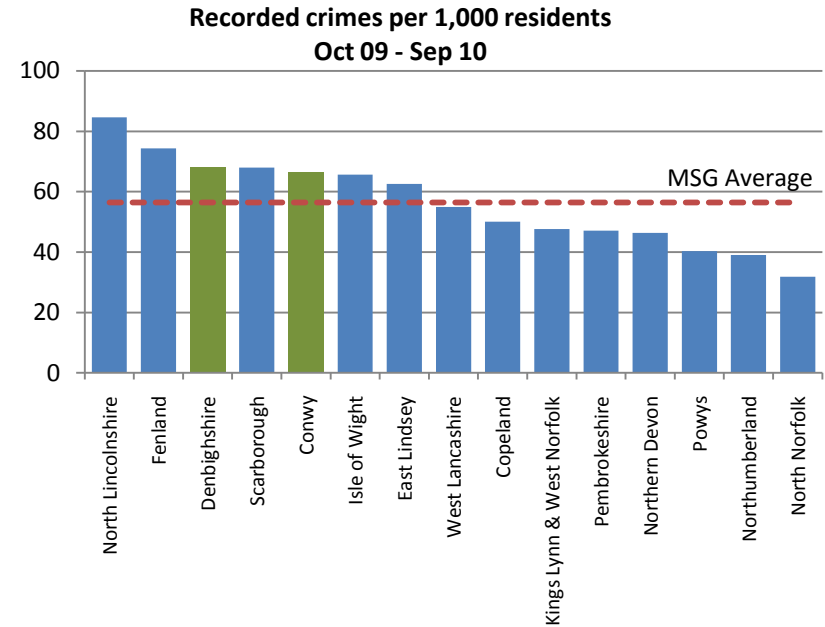
Conwy and Denbighshire both are increasingly safe places to live. Recorded crime has fallen by 11.3% in Conwy and 5.7% in Denbighshire since 2007/08.



During the last 12 months, October 2009 to September 2010, there has been a 1.4% decrease in Conwy and 4.3% in Denbighshire in recorded crime when compared to 2009/10.

How does this compare to other areas?

The Home Office has allocated each Community Safety Partnership to a group of 15 peer partnerships which are ‘most similar’ in nature to ensure that any comparisons with other areas are meaningful.



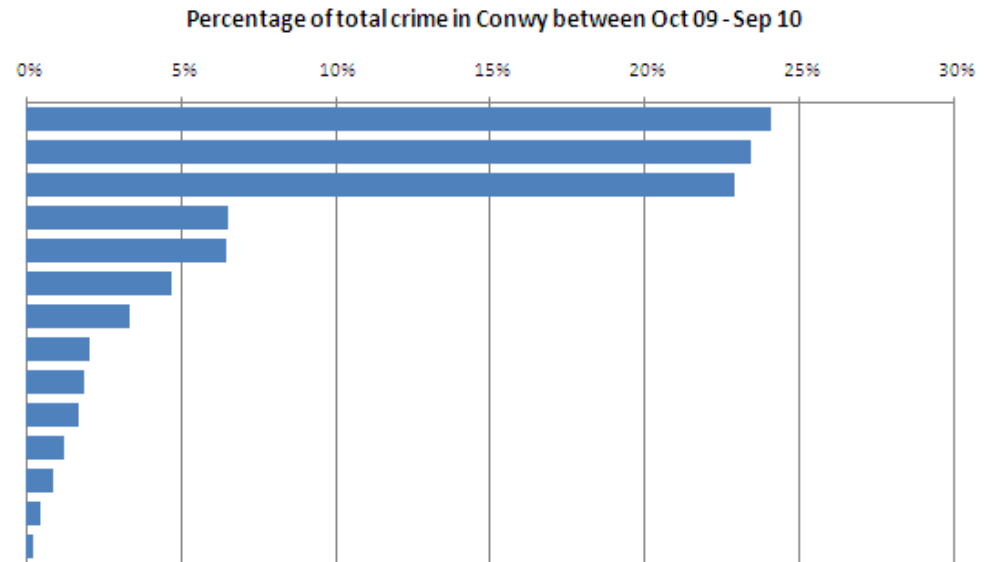
During the last 12 months the total number of crimes committed per 1,000 residents was 66.5 in Conwy and 68.1 in Denbighshire.

This is above the ‘most similar group’ average of 56.5 crimes per 1,000 residents. The level of crime in Conwy and Denbighshire is therefore above the average level seen in other areas deemed to be similar in nature.

2.2 An overview of crime in our area

Types of crime committed in Conwy

Crime Type	2009/10	Oct 09 - Sep 10	Actual Change
Theft & handling stolen goods	1772	1776	0.2%
Criminal damage	1800	1731	-3.8%
Violence against the person	1834	1692	-7.7%
Drugs	441	483	9.5%
Burglary, other than dwelling	437	477	9.2%
Theft from vehicle	372	348	-6.5%
Burglary	175	247	41.1%
Fraud	183	153	-16.4%
Other crime category	138	140	1.4%
Theft of vehicle	119	126	5.9%
Sex	94	92	-2.1%
Arson	65	66	1.5%
Vehicle interference	39	35	-10.3%
Robbery	20	16	-20.0%
Grand Total	7489	7382	-1.4%



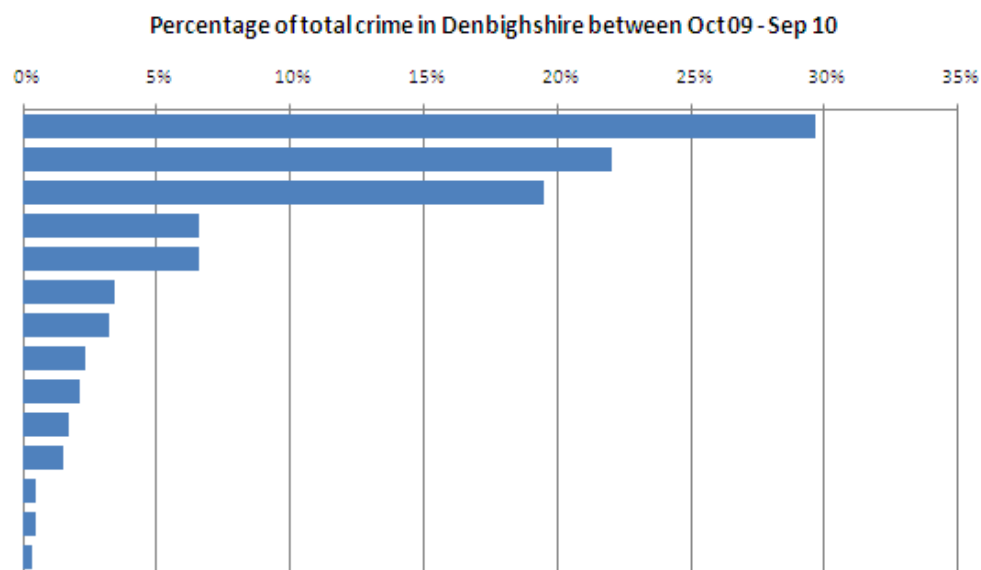
During October 2009 to September 2010 the most prevalent crime types were;

- Theft & handling stolen goods 24.1% of total crime
- Criminal damage 23.4% of total crime
- Violence against the person 22.9% of total crime

2.2 An overview of crime in our area

Types of crime committed in Denbighshire

Crime Type	2009/10	Oct 09 - Sep 10	Actual Change
Violence against the person	2258	1968	● -12.8%
Theft & handling stolen goods	1415	1462	● 3.3%
Criminal damage	1332	1295	● -2.8%
Burglary, other than dwelling	405	437	● 7.9%
Drugs	454	437	● -3.7%
Burglary	223	225	● 0.9%
Theft from vehicle	248	215	● -13.3%
Fraud	147	155	● 5.4%
Other crime category	138	140	● 1.4%
Theft of vehicle	121	114	● -5.8%
Sex	90	101	● 12.2%
Arson	36	33	● -8.3%
Vehicle Interference	39	32	● -17.9%
Robbery	28	20	● -28.6%
Grand Total	6934	6634	● -4.3%



During October 2009 to September 2010 the most prevalent crime types were;

- Violence against the person 29.7% of total crime
- Theft & handling stolen goods 22.0% of total crime
- Criminal damage 19.5% of total crime

2.3 Public perception of crime and ASB

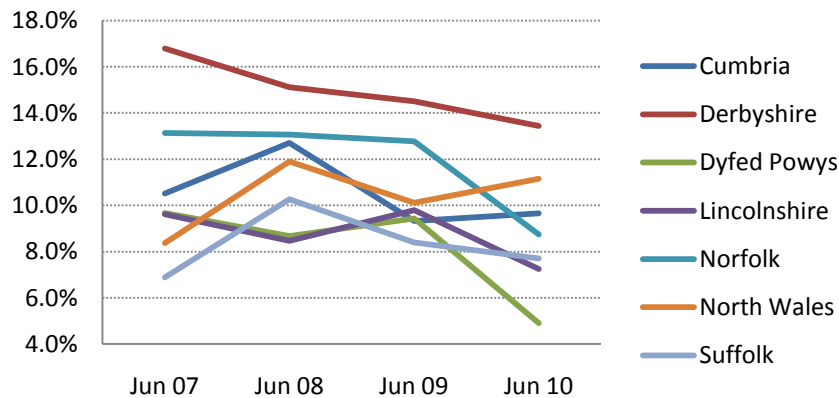
Result of the British Crime Survey

The British Crime Survey is an important part of information about the levels of crime and public attitudes to crime; the results of this survey play a key role in informing Government policy.

The data from this nationwide survey is collated at a police force level. Therefore, reviewing the results gives us an idea of public perception throughout North Wales.

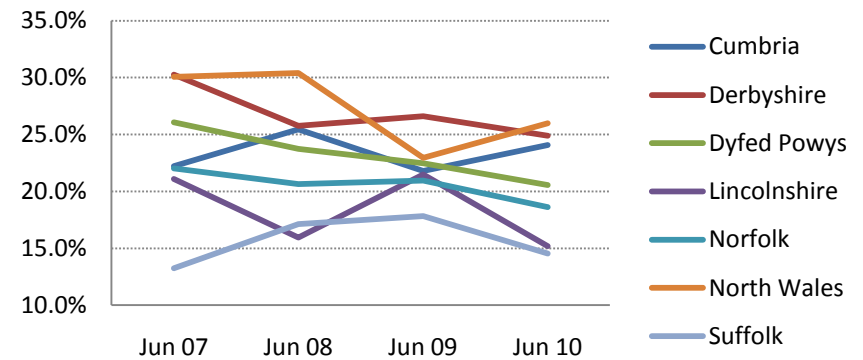
The crime survey is undertaken quarterly, with the most recently published data being in relation to the year ending September 2010. The lowest level the results are published for is North Wales; results are not published by CSP area.

**% of respondents who feel ASB is a problem
and our most similar forces**



The public perception of ASB in North Wales has risen this year, June 10, compared to last year. North Wales currently has the second highest perception of ASB amongst its most similar group.

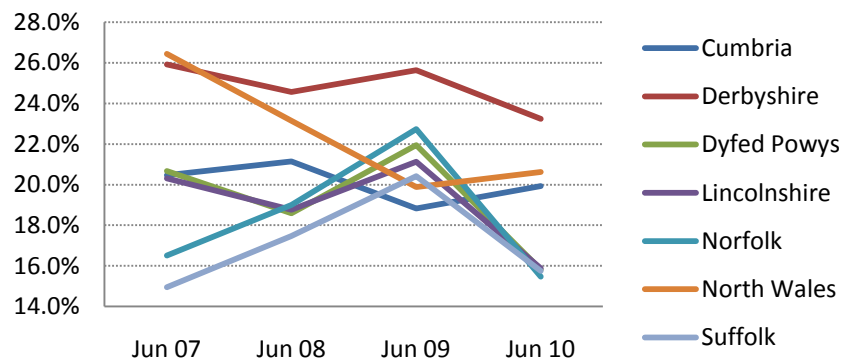
**% of respondents who feel using or dealing drugs is
a problem
and our most similar forces**



The perception that the use and dealing of drugs is a problem is highest in North Wales when compared to its most similar group. It has however fallen from 30.1% in June 07 to 26.0% in June 10.

2.3 Public perception of crime and ASB

% of respondents who feel drunk or rowdy behaviour is a problem and our most similar forces



The public's perception of drunk and rowdy behaviour has fallen significantly in North Wales from 26.4% in June 07 to 20.6% in June 10. This is the largest reduction seen amongst the police forces within the most similar group.

Swift Survey - February 2011

North Wales Police commission Swift to conduct a public opinion survey annually. The findings around ASB and community safety in the most recent survey in February 2011 were;

- ▶ Main concerns are;
 1. Careless or dangerous driving (40%)
 2. Young people hanging around (32%)

3. People using or dealing drugs (28%)
4. Littering / rubbish (22%)
5. Vandalism (22%)
6. People being drunk or rowdy in public place (20%)

- ▶ On what are these concerns based;
 1. 70-75% based on own experience
 2. 8-9% Newspapers – higher than others
- ▶ 25% are aware of community partnership work between North Wales Police and other agencies.

The influence of the newspapers in Conwy and Denbighshire is greater than in other parts of North Wales.

The response to partnership working may be due to a lack of awareness of the agencies involved rather than the services provided.

2.4 Violent crime - Summary

Key issues

- Violent crime in Conwy and Denbighshire accounted for 27.7% of all recorded crime between Oct 09 and Sep 10.
- Conwy and Denbighshire have an above average number of violent crimes per 1,000 residents when compared to the other similar CSP areas.
- 37.8% of violence against the person was recorded as being alcohol related with 652 offences in Conwy and 734 in Denbighshire.
- The number violence against the person crimes per 1,000 residents is highest in Denbighshire and above average in Conwy when compared to the other similar CSP areas.
- Offenders are predominantly male (78.6%) with the most prolific group are males between 15-24 accounting for 33.2% of offenders.
- Violence against the person offences occurred most frequently during the evening and night with a peak between 22:00 and 02:00, located around the night time economy.
- 3 in 4 victims of most serious violence are male and most frequently aged between 15 and 24.

Outcomes

Reduce violent crime in Conwy and Denbighshire.

Indicators

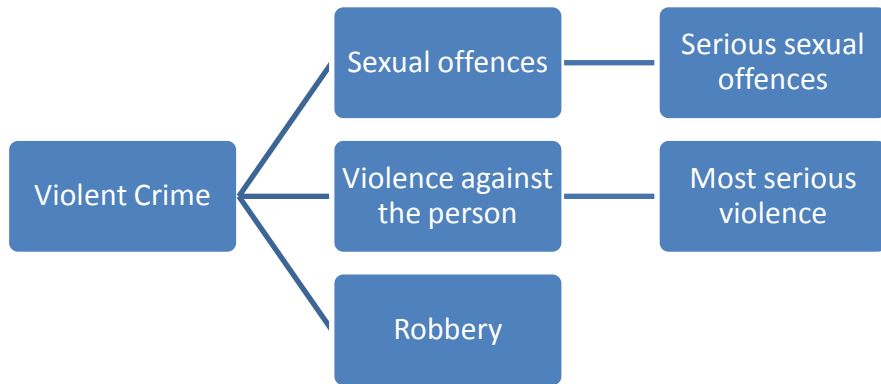
A reduction in any of the following will contribute towards a reduction in violent crime;

- Violent recorded crime
- Alcohol related violent crime
- Violence against the person
- Most serious violence
- Serious sexual offences

2.4 Violent crime

What is violent crime?

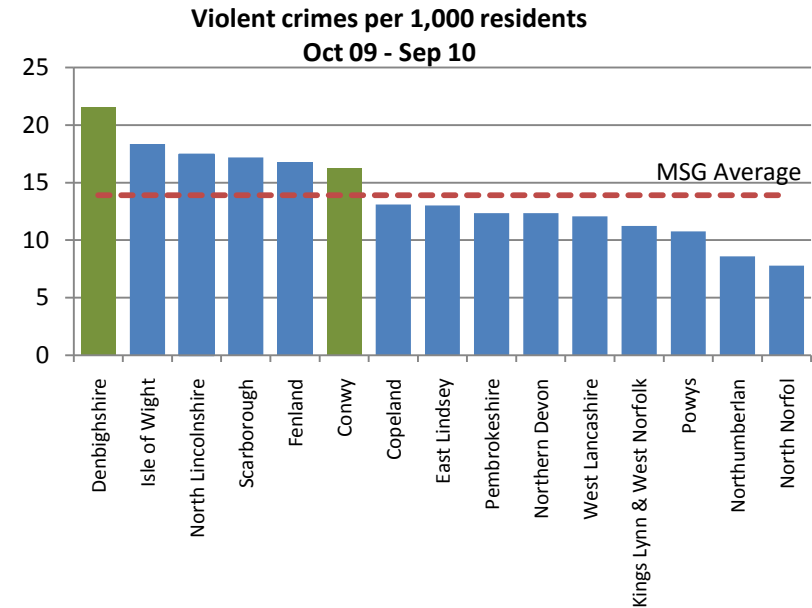
Violent crime is a broad range of crimes in which violence is a key feature. Crimes that are classed as 'violent crime' for the purposes of the statistics are largely robbery, sexual offences, assault with and without injury, harassment and murder.



There are three groups of crime within violent crime, “sexual offences”, “violence against the person” and “robbery”.

Both sexual offences and violence against the person have further subsets of more serious offences termed “serious sexual offences” and “most serious violence” respectively.

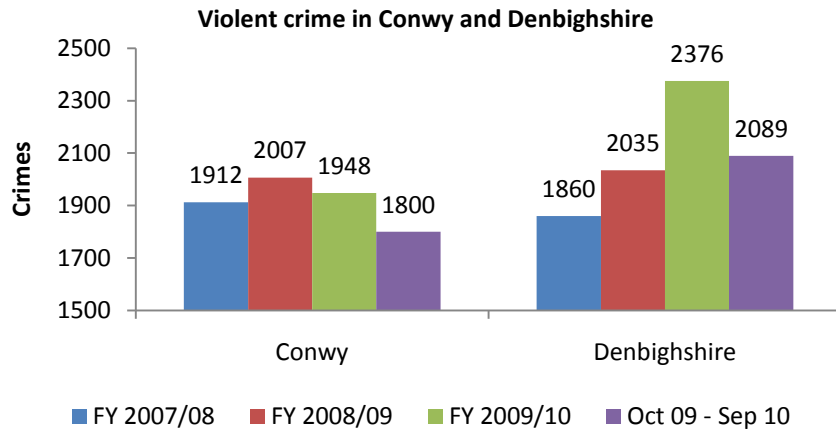
How do we compare to other areas?



Conwy and Denbighshire have an above average number of violent crimes per 1,000 residents when compared to the other CSP areas in the most similar group. Denbighshire has the highest number of violent crimes per 1,000 residents in the group with 22.6 compared to an average of 13.9 for the group, while Conwy has 16.2.

North Wales has an average of 17.0 violent crimes per 1,000 residents. Denbighshire is highest amongst the authority areas in North Wales, while Conwy is just below average.

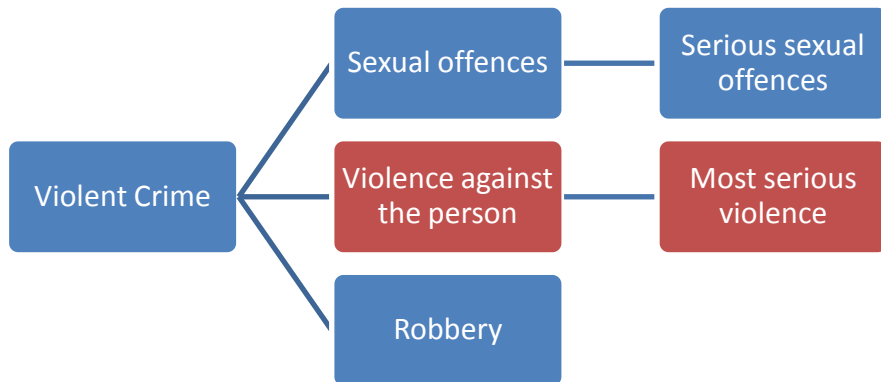
2.4 Violent crime



Violent crime in Conwy has fallen by 5.8% from 1912 in 2007/08 to 1800 between Oct 09 and Sep 10. There has been an increase of 12.3% in Denbighshire comparing the same period, however more recently there has been a significant reduction of 12.1% when compared to a peak in 2009/10.

Violent crime in Conwy and Denbighshire accounted for 27.7% of all recorded crime between Oct 09 and Sep 10.

2.4 Violent crime



Violence against the person (VAP)

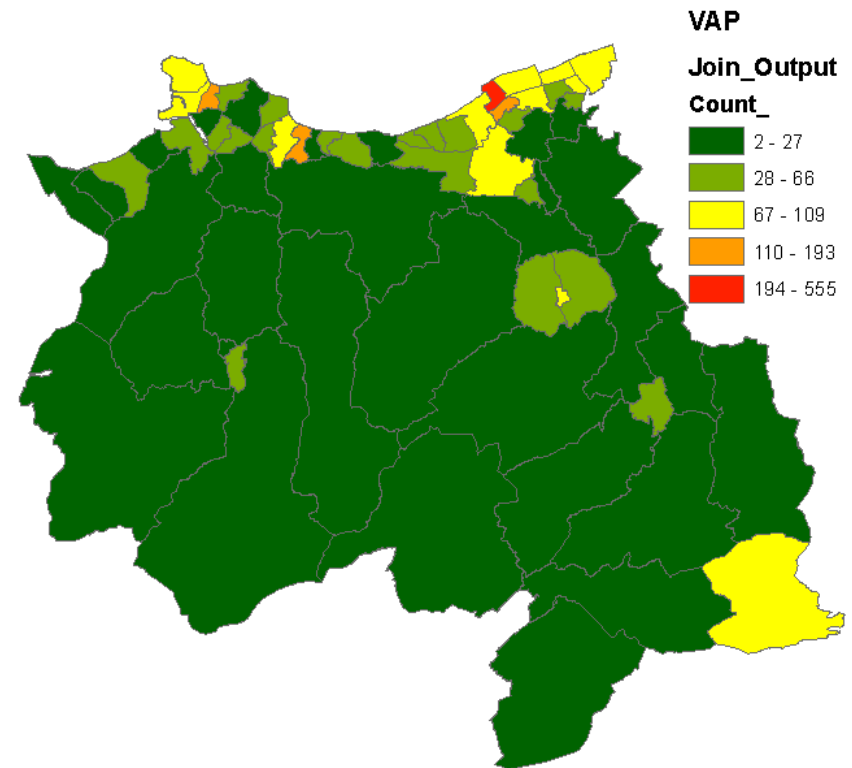
Violence against the person accounted for 94.1% of all violent crime in Conwy and Denbighshire between Oct 09 and Sep 10, with 1692 offences in Conwy and 1968 in Denbighshire.

In both Conwy and Denbighshire the majority of violence against the person offences were;

- Actually bodily harm and other injury 39.9% of violent crime
- Assault without injury 23.5% of violent crime
- Public fear, alarm or distress 19.5% of violent crime

These offences involve less serious injury or no physical injury.

Where is violent against the person most likely to occur?

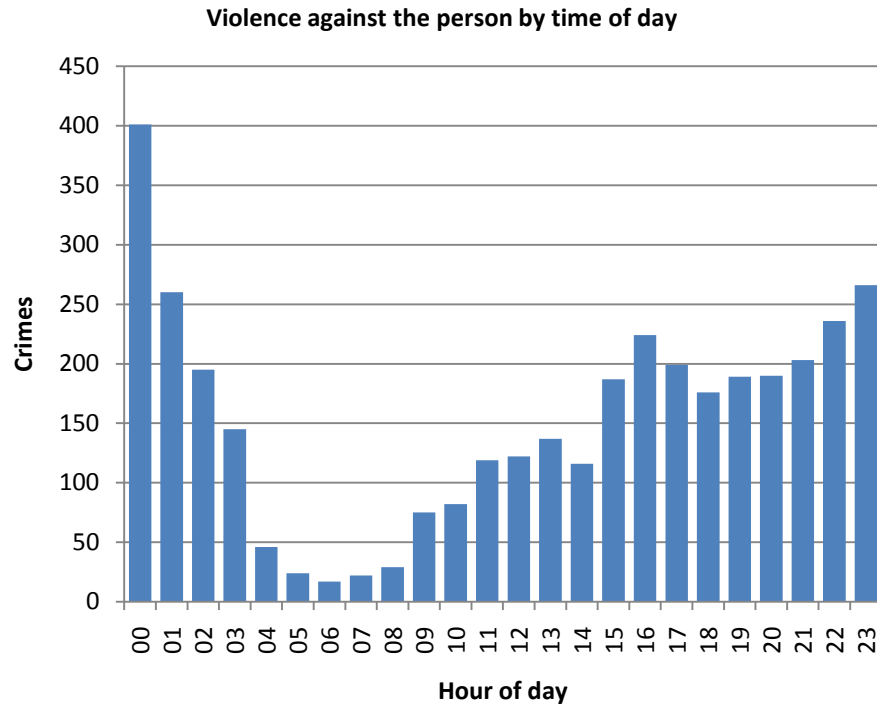


Violence against the person occurred most frequently in the wards Rhyl West (45.3%), Tudno (20.8%), Glyn (20.8%), Rhyl South West (14.1%) and Prestatyn East (13.5%), based on Oct 09 to Sep 10.

These offences are often centred around where the night time economy is most concentrated.

2.4 Violent crime

When is violent against the person most likely to occur?



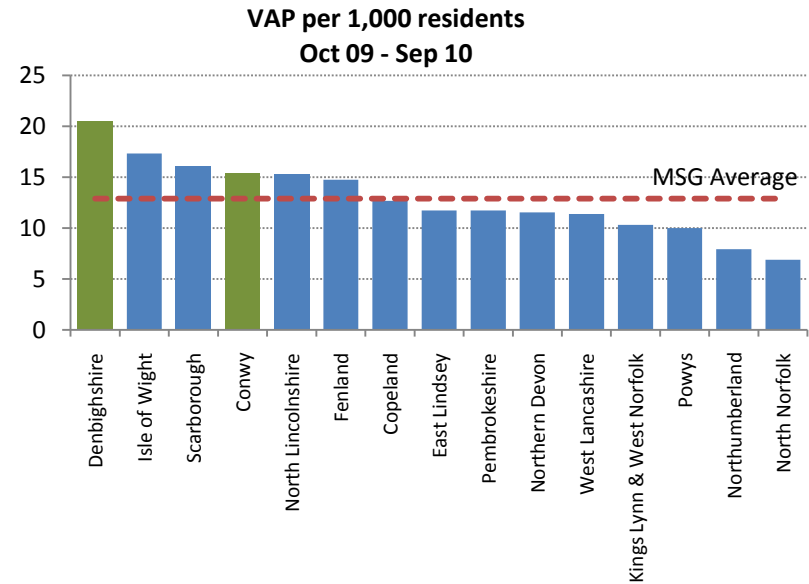
Violence against the person offences occurred most frequently during the evening and night with a peak between 22:00 and 02:00. Between 20:00 on Friday and 02:00 on Monday 39.6% of offences of violence the person occurred during Oct 09 to Sep 10.

Offenders are predominantly male (78.6%) with the most prolific group are males between 15-24 accounting for 33.2% of offenders.

Violent against the person and alcohol

37.8% of violence against the person was recorded as being alcohol related with 652 offences in Conwy and 734 in Denbighshire. Nearly 1 in 14 of these offences occurred in or near a licensed premises.

How do we compare to other areas?



Both Conwy and Denbighshire are above the most similar group average of 12.9, Conwy has 15.4 while Denbighshire had the highest in the group with 20.5.

2.4 Violent crime

Most serious violence (MSV)

There were 66 offences of most serious violence in Conwy and 92 in Denbighshire during Oct 09 to Sep 10, this is an increase in Conwy with 6 more offences and a decrease in Denbighshire with 13 fewer when compare to 2009/10.

More than 90% of most serious violence in both Conwy and Denbighshire is either “inflicting grievous bodily harm without intent” and “wounding or carrying an act endangering life”

In Conwy 56.1% and Denbighshire 41.3% of most serious violence offences were alcohol related.

Conwy

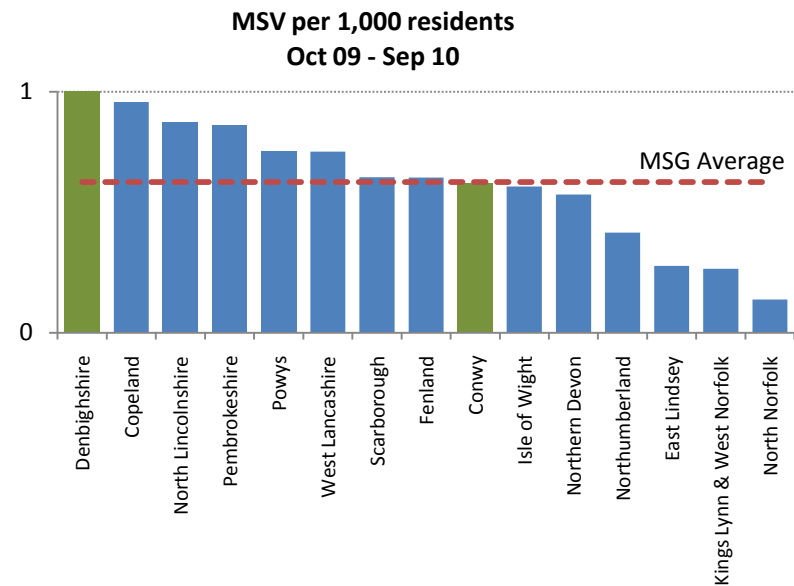
- Inflicting grievous bodily harm without intent 50.0% of MSV
- Wounding or carrying out an act endangering life 47.0% of MSV
- Attempted murder / murder 3.0% of MSV

Denbighshire

- Inflicting grievous bodily harm without intent 53.3% of MSV
- Wounding or carrying out an act endangering life 38.0% of MSV
- Attempted murder / murder 7.6% of MSV
- Possession of items to endanger life 1.1% of MSV

3 in 4 victims of MSV are male and most frequently aged between 15 and 24. In 38.1% of cases the offender is an acquaintance of the victim and a stranger in 26.7% of cases; although between spouses the victim is three times more likely to be female.

How do we compare to other areas?



Most serious violence is relatively infrequent with the most similar group average less than 1 incident per 1,000 residents. The level of this crime is average Conwy, however in Denbighshire it is 38.2% above the average seen in similar areas elsewhere in the England and Wales.

2.5 Serious acquisitive crime - Summary

Key issues

- 8.1% of all crime in Conwy and Denbighshire is serious acquisitive crime.
- The level of serious acquisitive crime is average in Conwy and below average in Denbighshire compared to similar areas in England and Wales.
- There has been a positive reduction in serious acquisitive crime in Denbighshire with a 25.4% reduction since 2008/9. While in Conwy it has increased in the last 12 months 7.4% compared to 2009/10.
- There has been a continued decline in vehicle crime in Conwy and Denbighshire with Oct 09 to Sep 10 having the lowest levels since April 2007.
- Offenders committing vehicle crime are almost entirely male with nearly 60% aged between 17 and 22 years old.
- The level of domestic burglary has remained relatively unchanged in Denbighshire since 2008/09, however in Conwy there has been a significant rise in Oct 09 to Sep 10 compared to 2009/10.
- Offenders committing domestic vehicle crime are most frequently males (88.5%), with a particular peak in the age group 15-25.
- There are very few robberies in Conwy and Denbighshire with 36 between Oct 09 and Sep 10.

Outcomes

Reduce serious acquisitive crime in Conwy and Denbighshire.

Indicators

A reduction in and of the following will contribute towards a reduction in serious acquisitive crime;

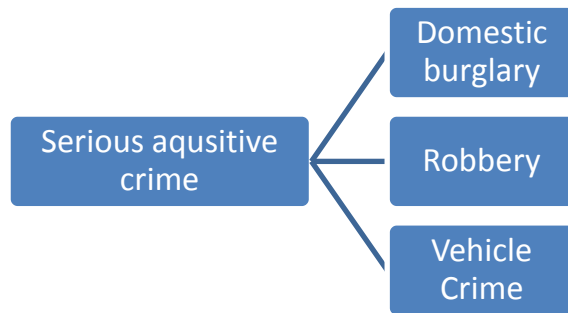
- Burglary
- Robbery
- Vehicle Crime

2.5 Serious acquisitive crime

What is serious acquisitive crime (SAC)?

Serious acquisitive crime is defined as domestic burglary (residence), theft of a motor vehicle, theft from a motor vehicle and robbery (people and business).

These types of crime are a priority for the partnership, as they cause great distress to those who find themselves a victim. It is also a crime people hear about often and, although the numbers are relatively low, it still causes people to feel unsafe.



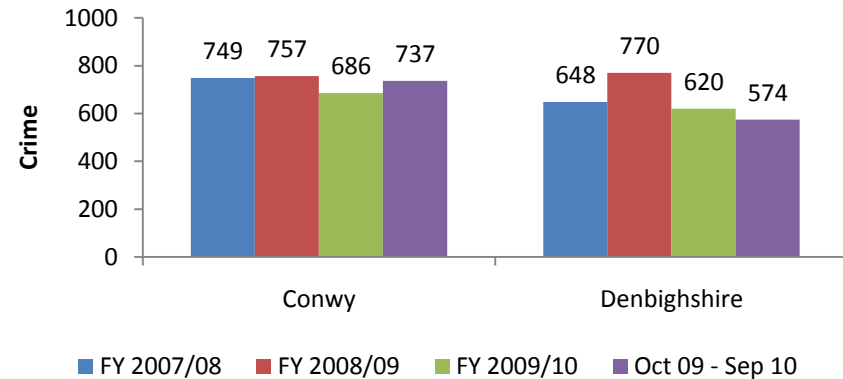
Serious acquisitive crime during Oct 09 to Sep 10 in Conwy and Denbighshire was made up of;

- Vehicle crime 61.3% of SAC
- Burglary 36.0% of SAC
- Robbery 2.7% of SAC

This split of offences is the same in both Conwy and Denbighshire.

During the Oct 09 to Sep 09 there were 737 serious acquisitive crimes in Conwy and 574 in Denbighshire. This represents a decrease in Denbighshire of 7.4% and an increase in Conwy of 7.4% when compared to 2009/10.

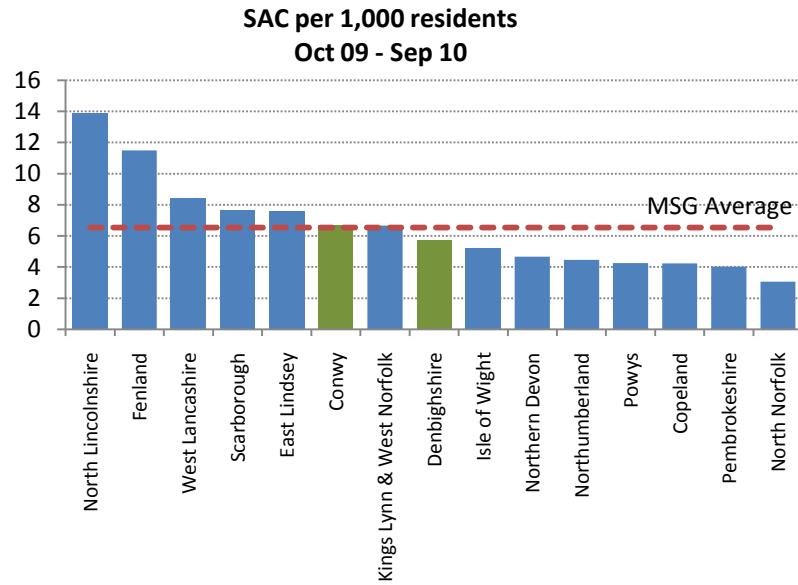
Serious acquisitive crime in Conwy and Denbighshire



There has been a significant reduction (25.5%) in serious acquisitive crime in Denbighshire since a peak in 2008/09; this is due to a reduction in all forms of SAC. However in Conwy there has been a rise in during Oct 09 to Dec 10 due to an increase in burglary.

2.5 Serious acquisitive crime

How do we compare to other areas?



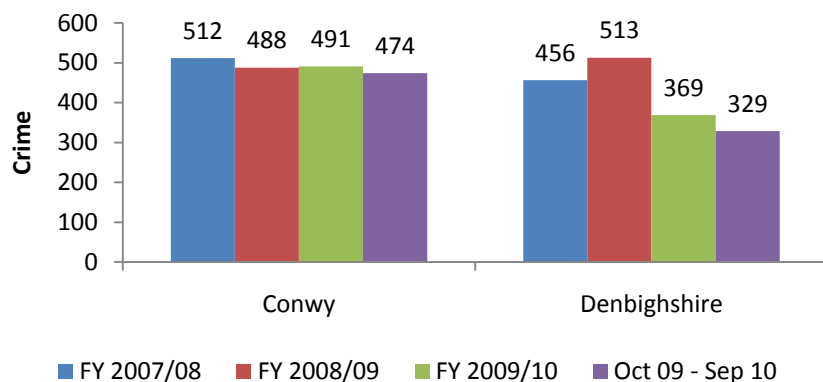
The level of serious acquisitive crime in Conwy and Denbighshire is either the same as or below the average seen in similar areas in England and Wales.

2.5 Serious acquisitive crime – vehicle crime

Vehicle crime

Vehicle crime, excluding vehicle interference, accounted for 64.3% of all SAC in Conwy and 57.3% in Denbighshire. Compared to other similar areas in England and Wales the level of vehicle crime in Conwy is average and in Denbighshire is below average.

Vehicle crime in Conwy and Denbighshire



There has been a continued decline in vehicle crime in Conwy and Denbighshire with Oct 09 to Sep 10 having the lowest levels since April 2007.

Vehicle crime is made up of three main crime types;

- Aggravated vehicle taking
- Theft from vehicle
- Theft or unauthorised taking of motor vehicle

Theft from vehicles accounted for 73.4% of vehicle crime in Conwy and 65.3% in Denbighshire with 348 and 215 crimes respectively.

Theft of motor vehicles accounted for 23.2% of vehicle crime in Conwy and 29.5% in Denbighshire with 110 and 97 crimes respectively.

Aggravated vehicle taking accounted for 3.3% of vehicle crime in Conwy and 5.2% in Denbighshire with 16 and 17 crimes respectively.

Offenders committing vehicle crime are almost entirely male with nearly 60% aged between 17 and 22 years old.

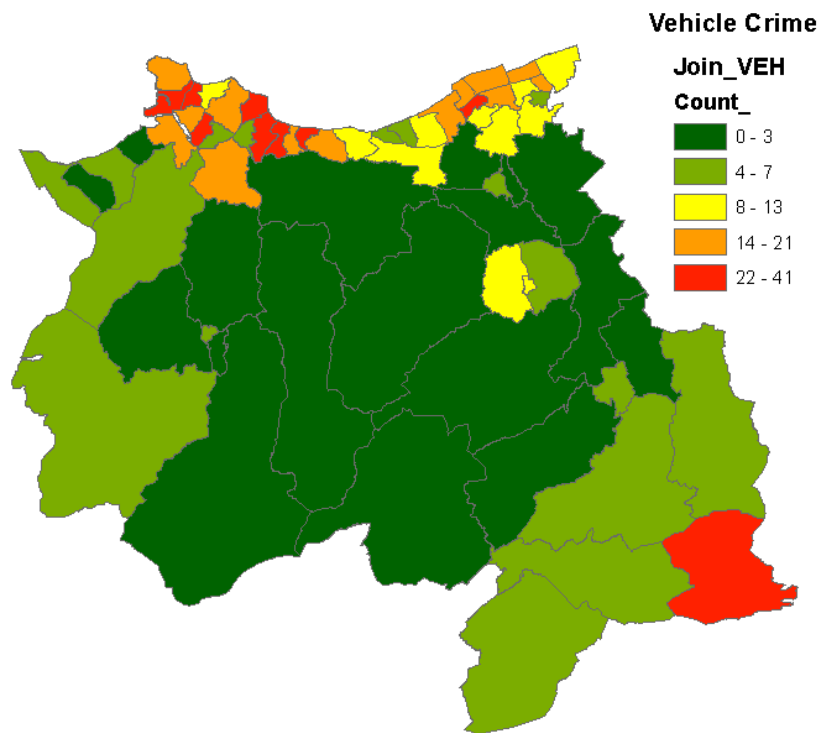
These offences occur throughout the day but peak at 17:00 and midnight; although midnight may be due to crimes occurring overnight and being reported the following day. Vehicle crime is more likely to occur during the weekend including Friday, which is the peak day.

Males are more likely to be a victim of vehicle crime than females accounting for 2 in 3 victims. There is no distinct age group for male victims with most aged between 20 and 54. Female victims however are most likely to be aged between 35 and 49.

2.5 Serious acquisitive crime – vehicle crime

Where is vehicle crime most likely to occur?

Areas with the highest level of vehicle crime are Colwyn Bay (22.2%), Rhyl (19.7%) and Llandudno (14.4%).

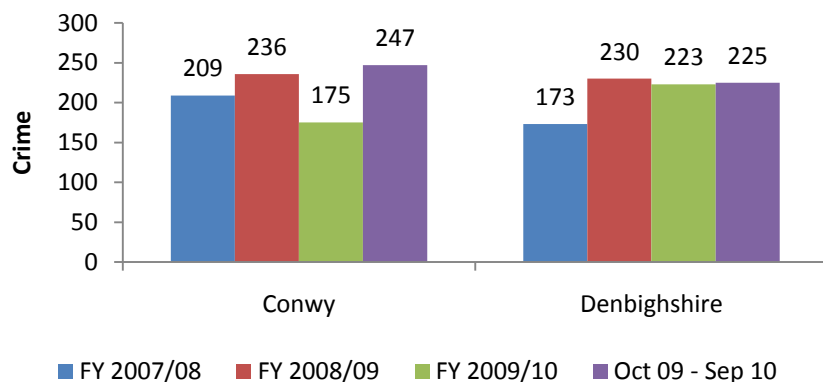


2.5 Serious acquisitive crime – domestic burglary

Domestic burglary

Domestic burglary is theft of property from peoples home as opposed to business premises. Compared to other similar areas in England and Wales the level of domestic burglary in Conwy and Denbighshire is below average.

Domestic burglary in Conwy and Denbighshire



The level of domestic burglary has remanding relatively unchanged in Denbighshire since 2008/09, however in Conwy there has been a significant rise in Oct 09 to Sep 10 compared to 2009/10.

The rise in Conwy is due to a series of burglaries in Llandudno, Colwyn Bay and Abergele. Recent police operations have resulted in the arrest of several individuals connected to these offences which has lead to a decline in domestic burglary in recent months.

Offenders of domestic burglary

Offenders are most frequently males (88.5%), with a particular peak in the age group 15-25; males in the age group 15-25 account for 57.9% of all offenders detected.

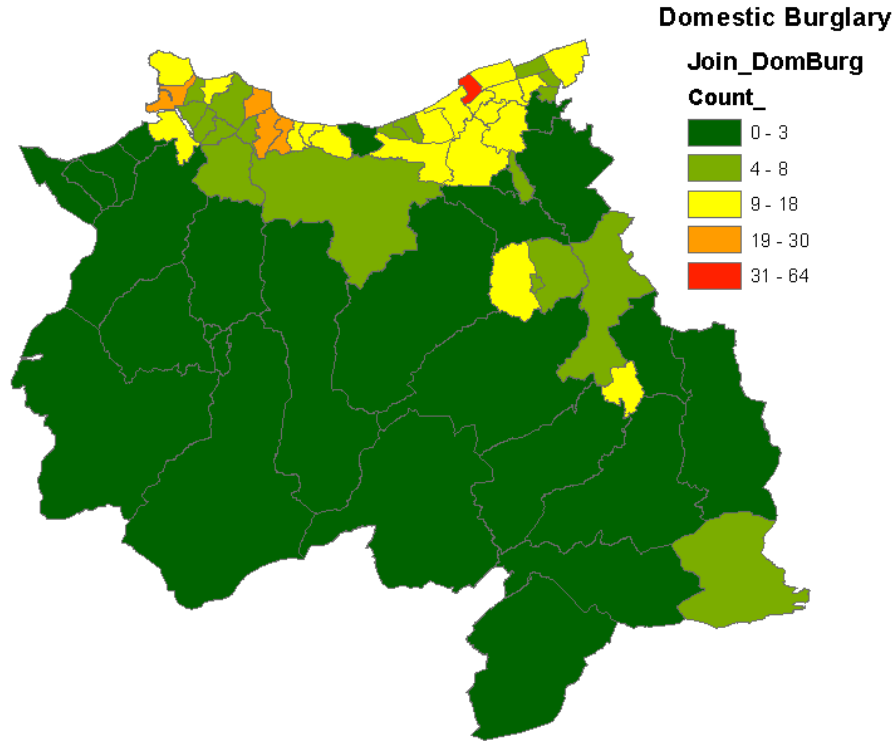
Victims of domestic burglary

Males and females are equally likely to be a victim of burglary, with 50.2% male. Females are at the highest risk of being a victim between 20-24 while males are more likely to be a victim either between 20-29 or 45-54. The high number of victims among the age group 20-29 are because of burglaries in the Rhyl and Colwyn Bay areas, possibly in social housing.

2.5 Serious acquisitive crime – domestic burglary

Where are domestic burglaries most likely to occur?

The areas with the highest number of burglaries are Rhyl (29.9%), Colwyn Bay (21.6%) and Llandudno (13.3%).



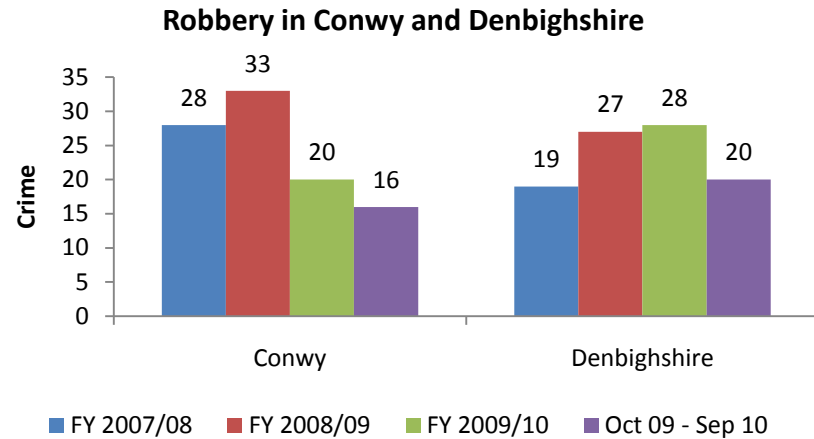
Distraction burglaries

Distraction burglaries although fewer in number have an impact on the perception of crime due to nature in which vulnerable victims are targeted. There have been 15 distraction burglaries across Conwy and Denbighshire between Oct 09 and Sep 10, with 6 in Conwy and 9 in Denbighshire. In most cases the offender has posed as an employee of a utilities company such as the water board or electric company. The victims targeted by these offences are often elderly and vulnerable. These offences have occurred across Conwy and Denbighshire at numerous locations, rather than a concentration in any one area. Offenders of detected offences were males between 18 and 33, with a peak at 22 years old.

2.5 Serious acquisitive crime – robbery

Robbery of a business or person

Robbery of a person or business is theft with violence or the threat of violence. Compared to other similar areas in England and Wales the level of robbery in Conwy and Denbighshire is below average.



There have been 36 robberies in Conwy and Denbighshire between Oct 09 and Sep 10. These offences are mostly robbery of a person which has declined when compared to 2009/10, down by 17.6% in Conwy and 38.1% in Denbighshire, with 11 fewer crimes in total.

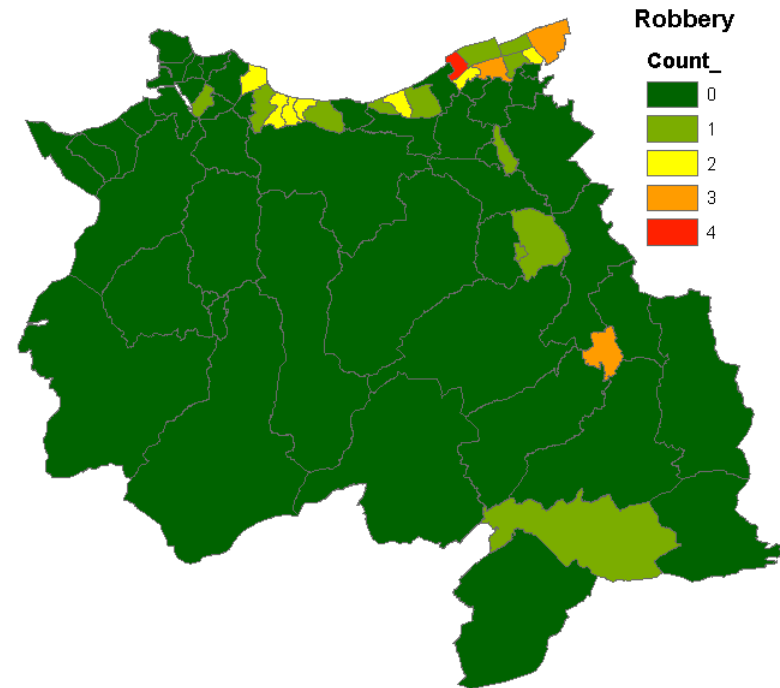
4 in 5 victims of robbery are male with the highest risk age group 25-29, 21.4% of victims. However the age groups 10-14 and 15-19 are also vulnerable with 28.6% of victims.

In almost all cases the offender is a stranger to the victim.

Offenders are most commonly male (97.1%) and aged between 15-19 years old.

Where are robberies most likely to occur?

Rhyl (33.3%) is the most common location for robbery. Robberies occur most often on a Friday (27.8%), although as the number of crimes are low it hard to indentify a pattern.



2.6 Domestic crime - Summary

Key issues

- 10.3% of all crime in Conwy and Denbighshire is domestic crime.
- In Conwy and Denbighshire the number of domestic incidents has fallen since 2008/09 by 29.0% in Conwy and 32.9% in Denbighshire.
- Domestic crime has risen in both counties with a 15.4% increase in Conwy and a 47.7% increase in Denbighshire since 2008/09.
- 80% of domestic crime in Conwy and Denbighshire is violent domestic crime.
- 77% of domestic violence is actually bodily harm and other injury **or** assault without injury.
- Victims of domestic violence are predominantly female (77.4%), however opposed to public perception 1 in 4 victims is male.
- Domestic violence offenders are usually male (82.1%), most commonly aged between 20-29.
- 25% of domestic violence incidents reported in North Wales are repeat incidents. This compares favourably with our 'most similar group' of police forces where the average level of repeat incidents is 29%
- Rhyl (33.5%), Colwyn Bay (12.2%), Llandudno (11.8%) and Prestatyn (11.0%) were the most common locations for domestic violence.

Outcomes

Reduce domestic related crime Conwy and Denbighshire.

Indicators

A reduction in any of the following will contribute towards a reduction in domestic related crime;

- Domestic incidents
- Domestic crime
- Domestic violent crime

2.6 Domestic crime

What is domestic crime?

Domestic crime is defined as any crime that occurs between individuals who are, or were, intimate partners or family members; regardless of gender.

Domestic crimes and non crimes

Any incidents the police deal with can be classed as domestic based on the relationship of the victim and offender. This means that incidents that are not deemed a crime can still be classed as domestic such as verbal disputes.

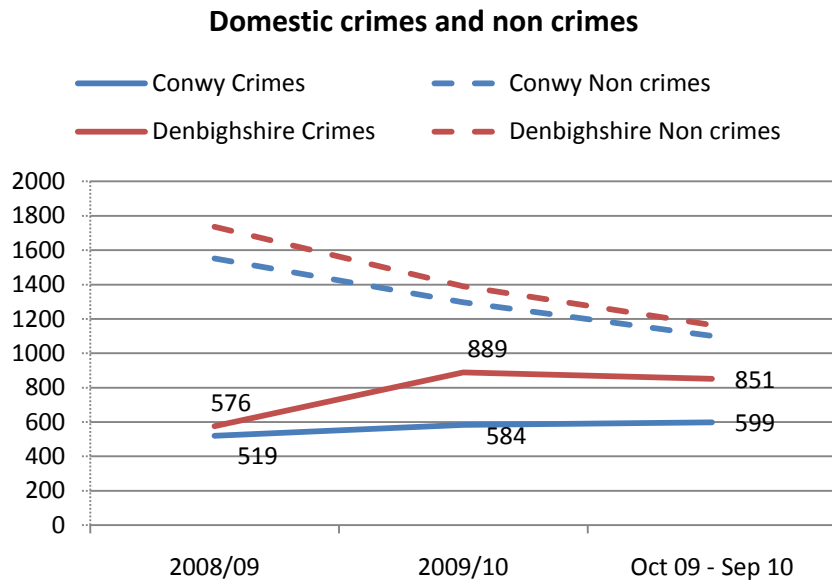
The previous chart shows that in both Conwy and Denbighshire the number of domestic incidents has fallen since 2008/09 by 29.0% in Conwy and 32.9% in Denbighshire, when compared to Oct 09 to Sep 10. However in contrast domestic crime has risen in both counties with a 15.4% increase in Conwy and a 47.7% increase in Denbighshire during the same period⁸.

This does not necessarily mean that the actual level of domestic crime has increased in Conwy and Denbighshire in the last 2-3 years. It is nationally recognised that most domestic abuse goes unreported, so the main priority is to increase the reporting of incidents.

In recent years the Criminal Justice Service has made many changes to the way in which it deals with domestic incidents such as prioritising the response, placing greater focus on victim care and screening incidents to ensure all domestic related incidents are dealt with and recorded as a crime where necessary.

Domestic violence coordinators have raised awareness of domestic abuse throughout agencies providing frontline services to the public; this also increases the likelihood of crimes being reported.

The objective of all involved in tackling domestic abuse is to create an environment where the victim feels they will be supported.



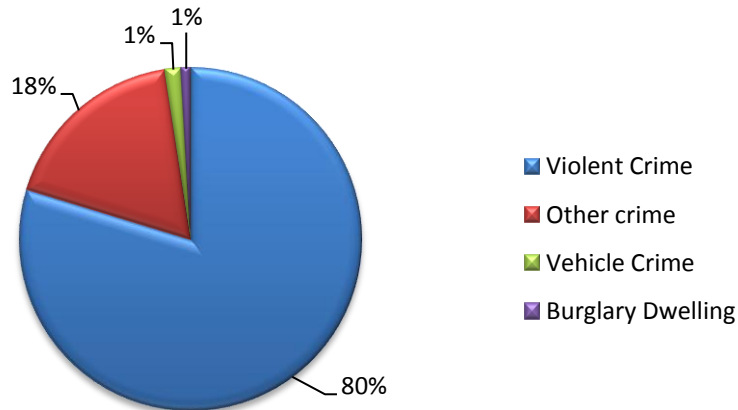
⁸ Data provided by North Wales Police IGroup

2.6 Domestic crime

Domestic crime

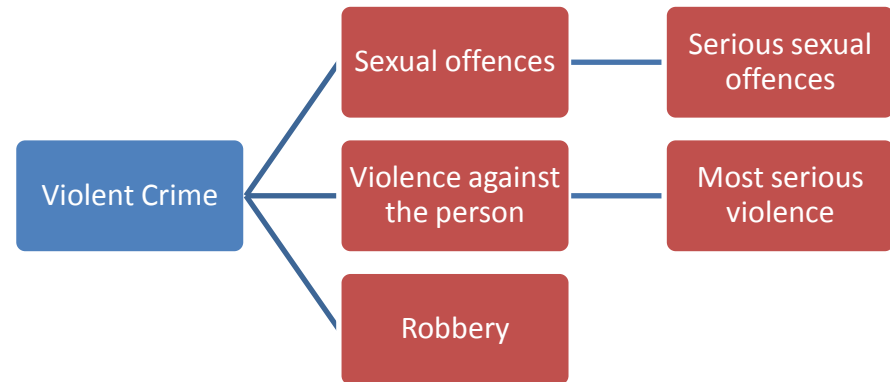
80% of domestic crime in Conwy and Denbighshire is violent domestic crime. The non violent offences are mostly criminal damage to property or vehicles or the threat of criminal damage, other common offences are for public order.

**Domestic crime
Oct 09 - Sep 10**



Domestic violence (DV)

This section examines violent crimes that have been identified as domestic therefore include violence against the person, sexual offences and robbery.



The three most common crimes account for 85.3% of all domestic violence;

- Actually bodily harm and other injury 46.3% of DV
- Assault without injury 30.1% of DV
- Harassment 8.9% of DV

Rhyl (33.5%), Colwyn Bay (12.2%), Llandudno (11.8%) and Prestatyn (11.0%) were the most common locations for domestic violence between Oct 09 and Sep 10. These crimes occur everyday of the week with no particular day standing out. The same is true for the time of day at which crimes occur, starting at 9:00 and increasing throughout the day until a peak at midnight before stopping around 3:00.

2.6 Domestic crime

Nearly 1 in 4 (22.1%) of domestic violence occurs in a public place, with a small number of these (3.2%) in a licensed premises.

Alcohol plays a major part in domestic violence, in 41.0% of offences the offender was believed to have been under the influence of alcohol. It is not possible to record whether the offender was or was not using a substance at the time of the offence in all cases therefore in 38.8% of crimes it is unknown. This means that excluding unknown cases alcohol was a factor in 2 out of 3 violent domestic crimes.

The offender and victim are most often spouses, 69.1% of crimes. In 28.5% of crimes the offender and victim are related as family, highlighting the domestic violence that can take place involving children and elderly parents.

Victims are predominantly female (77.4%), however opposed to public perception 1 in 4 victims is male. Females are most likely to be a victim of domestic violence between 20-29; although in cases of domestic violence amongst family members they are more likely to be 10-19 years old.

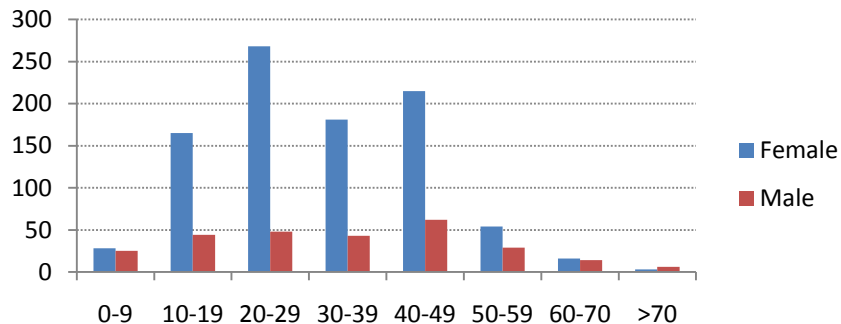
Offenders are usually male (82.1%) and aged between 20-29, the offender profile is very similar to the victim profile as they are most often spouses. In cases of domestic violence between family members the proportion of female offenders increases to 1 in 3 compared to 1 in 5 in all cases.

Repeat victimisation

The British Crime Survey indicates that victims of domestic violence are more likely to experience repeat victimisation over any other crime type, with nationally 45% of victims being victimised more than once.

25% of domestic violence incidents reported in North Wales are repeat incidents. This compares favourably with our 'most similar group' of police forces where the average level of repeat incidents is 29% and the highest level is 48%. This demonstrates that current interventions are having a positive impact and should be continued.

Age and gender of victims of domestic violence in Conwy and Denbighshire



2.6 Domestic crime

How do we tackle domestic violence?

The Community Safety Partnership is aware of the complex nature of domestic violence and takes advantage of its partnership structure to deliver the following domestic violence services.

Multi Agency Risk Assessment Conference (MARAC)

Domestic abuse is a critical issue for many agencies and there is no prescriptive response that can be used by a single agency in all cases. As a result a Multi Agency Risk Assessment Conference (MARAC) is held on a regular basis to address the safety and protection of victims.

The MARAC draws together the police and partner agencies to provide a victim-focused response, and gives those involved a structured forum for sharing information, risk assessment and planning in relation to victims of domestic abuse and their families, and also to perpetrators. There are now over 220 MARACs across England and Wales. This is still less than the estimated 300 needed nationally⁹.

To support a more efficient MARAC, some agencies have benefitted from CAADA DASH RIC (Co-ordinated Action Against Domestic Abuse - Domestic Abuse, Stalking, Harassment, Honour Based Violence - Risk Indicator Checklist) training via Domestic Abuse Co-ordinator. North Wales Police, Community Mental Health Services

& A&E Departments in BCUHB commenced the use of the RIC in 2010, with other agencies soon to follow.

Independent Domestic Violence Advisor (IDVA)

Since September 2010 there have been two IDVAs operating across Conwy and Denbighshire; on average dealing with 30 referrals per month.

The IDVAs address the safety concerns of victims who are at high risk of harm from domestic abuse; this could be from an intimate partner, ex-partner or family member.

The IDVA will work with clients to secure their safety and the safety of their children. The IDVA service is independent and can therefore give impartial advice. Working in partnership with the criminal justice agencies, the IDVA service can ensure that victims are informed throughout the criminal justice process including pre-trial reviews, sentencing and pre-sentence reports. They can also provide support with civil court proceedings to avoid victims being left with no protection. IDVAs link with the Multi Agency Risk Assessment Conference identifying sources of help and safety, providing victims with the different options available, enabling them to get the help they need. IDVAs also act as a single point of contact for other agencies.

⁹ Saving lives, saving money www.caada.org.uk

2.6 Domestic crime

Specialist domestic violence data (1st Qtr 2010/11)¹⁰

From the Police data provided for Conwy and Denbighshire, 371 domestic crimes were reported in this quarter which resulted in 236 arrests (63.6%). 178 DV crimes were detected for the area and 84 cases were reviewed by MARAC, with 27.3% being repeat cases.

In Conwy and Denbighshire 30% of unsuccessful outcomes from charged cases were due to the victim retracting from the case, this is above the North Wales average of 25.4%.

Of the 92 cases brought before the CPS 94.6% were charged. The 87 cases charged 65.5% (57 cases) ended in a successful prosecution.

¹⁰ Rachel Cutler North Wales Criminal Justice Board

2.7 Victims of crime - Summary

Key issues

- 53.4% of victims of crime were male suggesting there is little difference in the vulnerability of males or females to crime in general.
- Young people are increasingly likely to be a victim of crime as they get older until the age of 20-25, at which point they are amongst the most vulnerable to crime.
- Young victims are most commonly victims of violence against the person. They are twice as likely to be a victim of violence against the person as all other victims of crime
- In cases of violence against the person where a young person was a victim 1 in 4 offenders were under the influence of alcohol.
- During Oct 09 to Sep 10 there were 214 repeat victims of crime in Conwy and Denbighshire; this is a difference of 6 fewer when compared to the same period 12 months earlier.
- There are two age groups where females are 3 times more likely to be repeat victim of crime; these are 20-29 and 40-44.
- Repeat victims are most commonly (51.9%) a victim of violence against the person.
- 25.0% of repeat victims are victims of criminal damage.

Outcomes

Reduce the number of victims of crime in Conwy and Denbighshire.

Indicators

A reduction in any of the following will contribute towards a reduction in victims of crime;

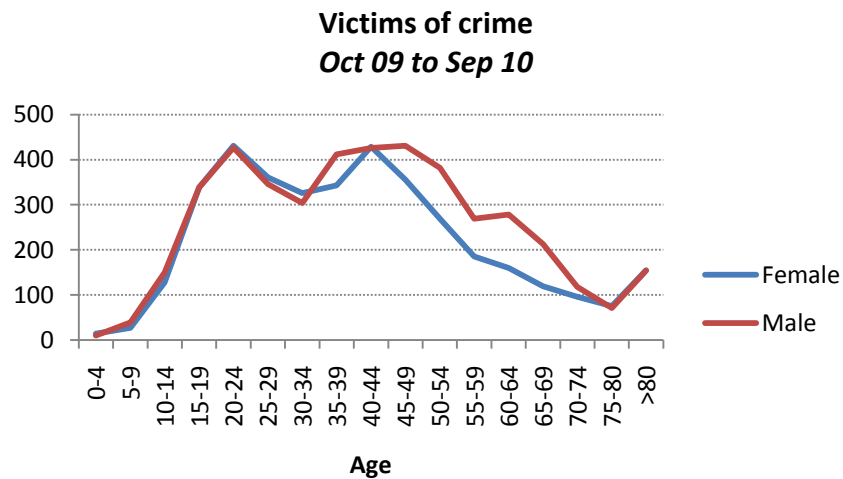
- Victims of crime
- Young victims of crime, under 25 years old
- Repeat victims of crime

2.7 Victims of crime

The main aim of the Community Safety Partnership is to reduce the impact of crime and disorder on the community and make Conwy and Denbighshire a safer place. Reducing victims and repeat victims of crime is fundamental to achieve this.

Who is a victim of crime?

There were 8182 victims of crime in Conwy and Denbighshire between Oct 09 and Sep 10. The following chart shows the age and gender profile of these victims. 53.4% of victims of crime were male suggesting there is little difference in the vulnerability of males or females to crime in general. The age profile for males and females is also very similar with the exception of a slightly heightened risk to males aged between 45-69.



Young victims

Young people are increasingly likely to be a victim of crime as they get older until the age of 20-25, at which point they are amongst the most vulnerable to crime. There were 1889 victims of crime under 25 in Conwy and Denbighshire; this is 23.1% of all victims of crime during Oct 09 to Sep 10.

Violence against the person

Young victims are most commonly victims of violence against the person offences. They are twice as likely to be a victim of violence against the person as all other victims of crime with 56.7% of under 25s compared to 24-27% for all victims of crime. These offences are most often actual bodily harm or assault without injury, accounting for 83.1% of all violence against the person offence against under 25s.

In 1 in 4 cases the offender was under the influence of alcohol. 31.4% of the offences were domestic with an increased likelihood of the offender being under the influence of alcohol, 1 in 3.

36.2% of offences in which under 25s were victims occurred in Rhyl. Colwyn Bay (12.5%), Rhyl (11.8%) and Prestatyn (10.1%) are also areas of concern

Offenders are most often male (50.9%) and under 25 years old.

2.7 Victims of crime

Repeat victims

Repeat victims are defined as people who are a victim of crime 3 or more times in 12 month period.

During Oct 09 to Sep 10 there were 214 repeat victims of crime in Conwy and Denbighshire; this is a difference of 6 fewer when compared to the same period 12 months earlier. This is a result of 11 fewer victims in Conwy and 5 more in Denbighshire¹¹.

In general females are more likely to be a repeat victim of crime with 56.9% of all repeat victims. There are two age groups where females are 3 times more likely to be repeat victim of crime; these are 20-29 and 40-44.

Violence against the person (51.9% of repeat victims)

Repeat victims are most commonly (51.9%) a victim of violence against the person. 2 in 3 of the repeat victims of violence against the person are female with the highest risk age group 40-44; although there a number of female victims aged 15-29. These crimes are most often common assault or actual bodily harm as the result of domestic violence, see 2.6 Domestic Violence.

Criminal Damage (25.0% of repeat victims)

25.0% of repeat victims are victims of criminal damage. The profile of these victims varies with the type of criminal damage. Female repeat victims are more likely (65.8%) to be a victim of criminal damage to a dwelling (home), most of these victims range in age between 20-44. Male repeat victims are more likely (68.7%) to be a victim of criminal damage to a motor vehicle with the highest risk age group aged 45-49.

Theft and handling (8.5% of repeat victims)

Repeat victims of theft and handling offences account for 8.5% of all repeat victims. There are two groups that are vulnerable to this type of crime and they are males and females between 25-29 and females between 35-44. 3 in 4 of these repeat crimes occur in a public place and the offender is often unseen by the victim.

¹¹ Data provided by North Wales Police IGroup

2.8 Antisocial behaviour - Summary

Key issues

- On average in Conwy and Denbighshire there is one report of ASB for every recorded crime.
- There were 12,736 incidents of ASB in Conwy and Denbighshire reported to North Wales Police between Oct 09 and Sep 10, a 2.0% reduction compared to 13,002 in 2009/10.
- Particular locations for ASB were Rhyl (23.4%), Colwyn Bay (12.9%), Llandudno (11.8%) and Prestatyn (7.6%) between Oct 09 and Sep 10.
- 22.3% of all recorded crime in Conwy and Denbighshire was criminal damage or arson during Oct 09 to Sep 10.
- The reduction in criminal damage and arson in Conwy has been 32.6% and 25.1% in Denbighshire; when comparing Oct 09 to Sep 10 to 2007/08.
- Despite the reduction in recent years Conwy and Denbighshire still have an above average number criminal damage incidents per 1,000 residents when compared to similar areas in England and Wales.
- Most offenders (94.4%) receiving a yellow card are aged between 10-19

Outcomes

Reduce antisocial behaviour in Conwy and Denbighshire.

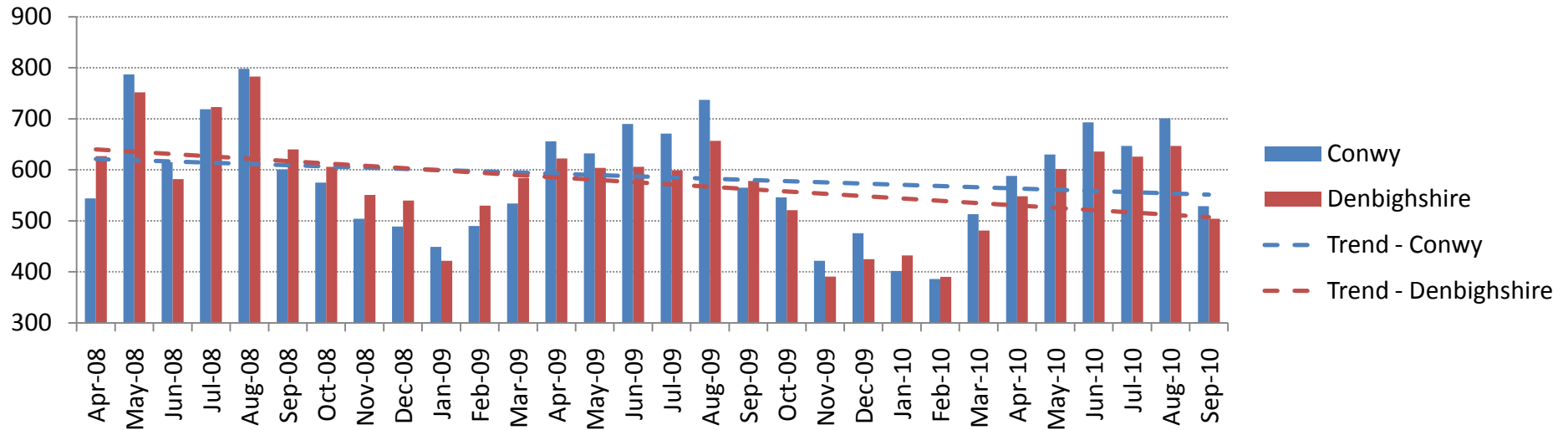
Indicators

A reduction in any of the following will contribute towards a reduction in antisocial behaviour;

- Incidents of antisocial behaviour reported to North Wales Police
- Incidents of antisocial behaviour reported to Conwy Borough Council and Denbighshire County Council
- Environmental prosecutions issued by Conwy Borough Council and Denbighshire County Council
- Criminal damage and arson reported to North Wales Police
- Arson / deliberate fires reported to North Wales Fire and Rescue
- Yellow cards / alcohol confiscations and YRDs issued in Conwy and Denbighshire.

2.8 Antisocial behaviour

Number of ASB incidents reported to North Wales Police in Conwy and Denbighshire



Antisocial behaviour reported to North Wales Police

Antisocial behaviour has a wider reaching impact on the community and it is understood that reported incidents are often affecting more than just those who report incidents.

There are many agencies that people can report anti-social behaviour (ASB) to such as the local authority, social housing or the Police. Of these agencies North Wales Police receive the majority of the reports of ASB in Conwy and Denbighshire; this is due to the

24 hour availability of the Police and people are often unsure whether a crime is being committed.

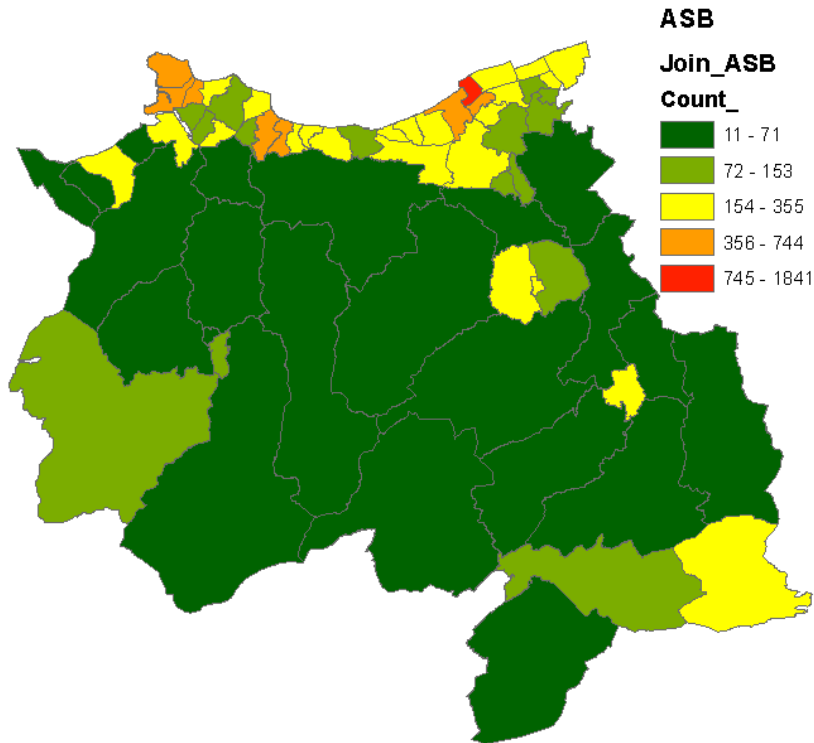
On average in Conwy and Denbighshire there is one report of ASB for every recorded crime. As a result where there is a high level of ASB there is high level of crime, emphasising the importance in addressing ASB.

2.8 Antisocial behaviour

There were 12,736 incidents of ASB in Conwy and Denbighshire reported to North Wales Police between Oct 09 and Sep 10, a 2.0% reduction compared to 13,002 in 2009/10. 51.3% of this ASB occurred in Conwy, with the remaining 48.7% in Denbighshire.

Where does ASB reported to North Wales Police occur?

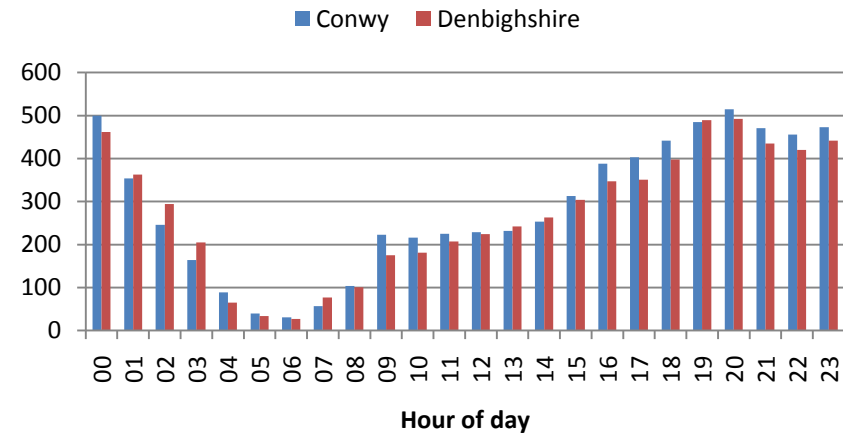
Particular locations for ASB are Rhyl (23.4%), Colwyn Bay (12.9%) and Llandudno (11.8%).



67.9% of the reported incidents are for rowdy nuisance or rowdy behaviour.

ASB incidents reported to Conwy and Denbighshire

Oct 09 - Sep 10



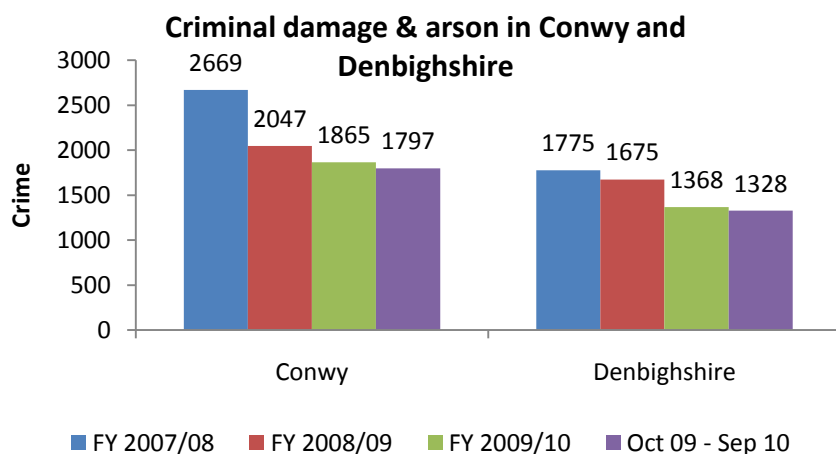
ASB incidents most frequently occur during the late evening and night with 50.0% occurring between 18:00 and 01:00.

2.8 Antisocial behaviour

Criminal damage and arson

Criminal damage is often seen as a minor crime, but neglected physical environments are unsafe, cause fear and undermine pride in the local community.

Criminal damage refers to crimes where a person intentionally or recklessly destroys or causes damage to property. Criminal damage includes arson, graffiti, damage to property and vehicles and is among the top 3 most common crimes in Conwy and Denbighshire.



There has been great success in tackling criminal damage and arson in both Conwy and Denbighshire as result of considerable focus by all agencies involved with the Community Safety Partnership. The reduction in criminal damage and arson in Conwy has been 32.6%

and 25.1% in Denbighshire; when comparing Oct 09 to Sep 10 to 2007/08.

Criminal Damage

The majority (42.6%) of criminal damage offences are criminal damage of a vehicle. Conwy has more of these offences than Denbighshire with 817 crimes compared to 502 during Oct 09 to Sep 10, which accounts for most of the difference between the two authorities.

Three quarters (72.4%) of these offences occur between 16:00 – 02:00, with more

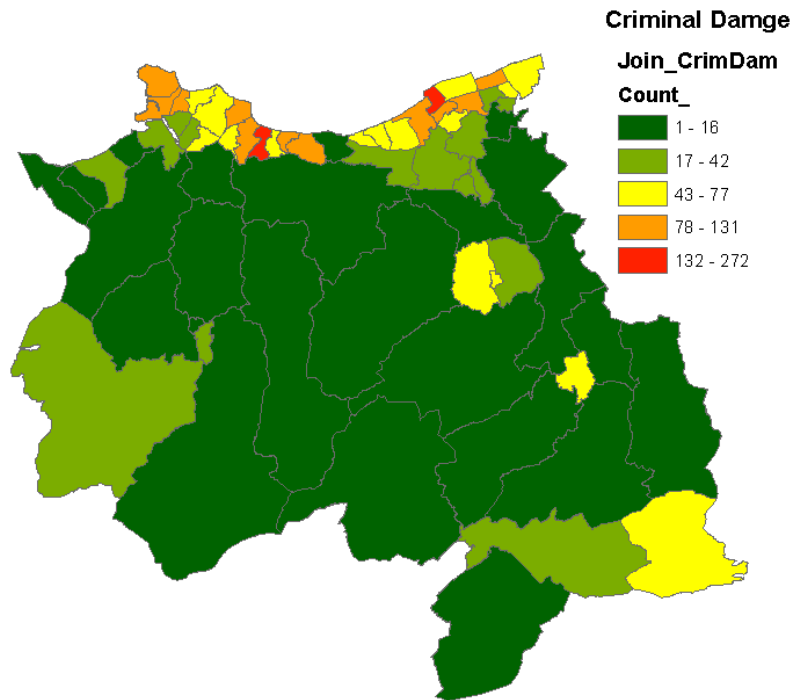
Victims of criminal damage are just as likely to be male or female and of all ages with no particular age group standing out. Most offenders are strangers or not seen by the victim.

Offenders are usually male (83.1%), with males aged between aged 15-24 accounting for (40.1%) of all criminal damage offenders in Conwy and Denbighshire.

2.8 Antisocial behaviour

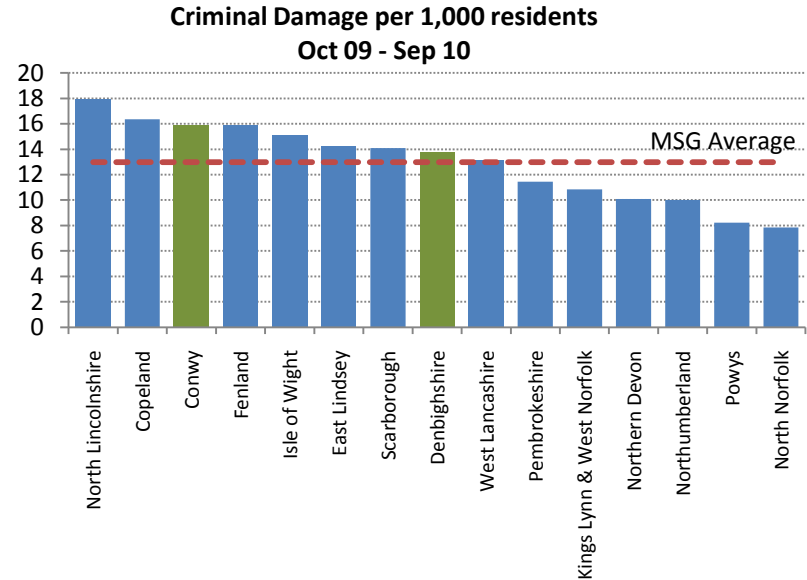
Where does criminal damage occur?

Criminal damage most often occurs in Rhyl (25.2%), Colwyn Bay (22.5%), Llandudno (13.1%) and Prestatyn (8.6%). offences of criminal damage occurring at weekends.



The offender was considered to be influenced by alcohol in 9.8% of offences in Conwy and Denbighshire. However in 83.1% of offences it was unknown if the offender was under the influence of a substance; this is because the offender was not apprehended at the time of the offence.

How do we compare to other areas?



Despite the reduction in recent years Conwy and Denbighshire still have an above average number criminal damage incidents per 1,000 residents when compared to similar areas in England and Wales.

Arson

Incidents of arson are less frequent than criminal damage with 65 in Conwy and 33 in Denbighshire between Oct 09 and Sep 10. Colwyn Bay (28.6%), Rhyl (20.4%), Llandudno (16.3%) and Abergele (12.2%) had the highest levels of arson reported to North Wales Police between Oct 09 and Sep 10. Offenders are mostly male and

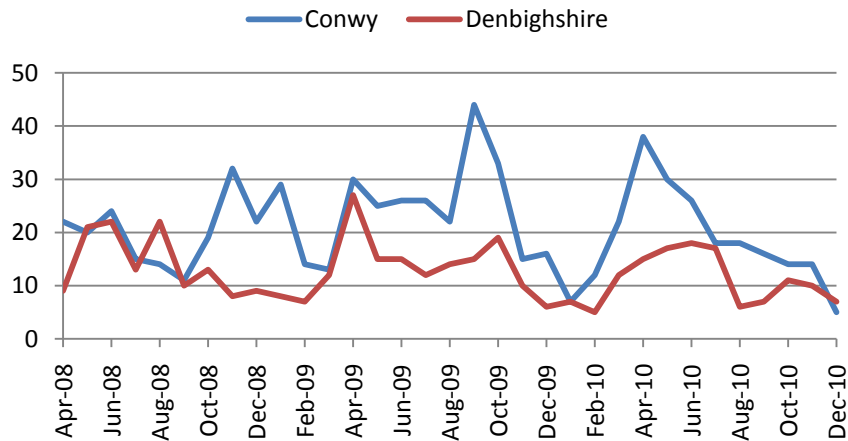
2.8 Antisocial behaviour

age between 15-29, this group account for 46.5% of arson offenders in Conwy and Denbighshire.

North Wales Fire & Rescue Service (NWFRS)

North Wales Fire & Rescue attend on average 34 fires each month that have been deliberately started across Conwy and Denbighshire. During the 12 months between October 09 and September 10 there were 251 deliberate fires in Conwy and 139 in Denbighshire, 27 and 18 fewer than in 2009/10 respectively.¹²

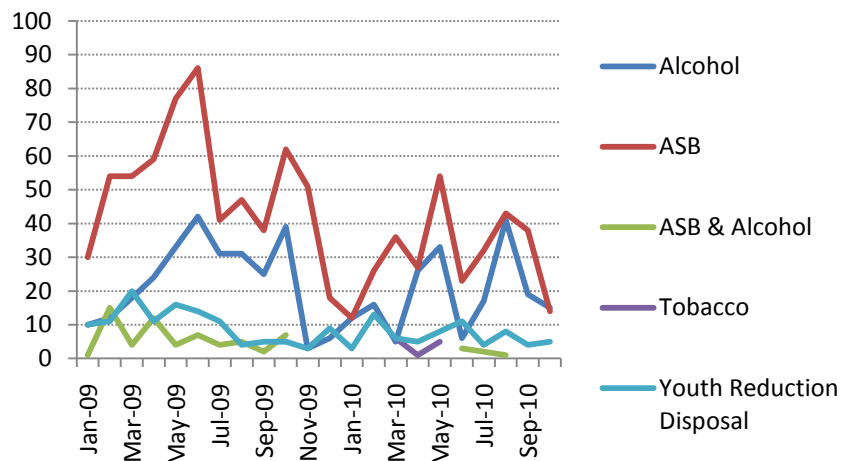
Number of deliberately started fires attended by NWFRS



¹² Definitions in accordance with statutory indicator FRS/RRC/S/001 iv) Total number of fires attended which were started deliberately per 10,000 population

2.8 Antisocial behaviour

Yellow cards for ASB, alcohol & tobacco confiscation and YRDs issued in Conwy and Denbighshire



Yellow cards, alcohol confiscations and YRDs

The number of yellow cards issued for ASB, alcohol confiscation made and YRDs issued has declined when comparing Oct 09 – Sep 10 to 2009/10.

Yellow cards for ASB

A yellow card may be issued when officers have evidence of antisocial behaviour AND the actions of the ‘offender’ are not serious enough to warrant their arrest or the issue of a Penalty Notice. It is the lowest form of intervention. If an offender

commits an offence and is issued with a yellow card, their details are entered onto North Wales Police's Crime Reporting System. If a young offender commits a further offence within six months, they will be referred to the Prevent and Deter scheme (PAD). For adult offenders yellow cards will provide evidence for antisocial behaviour orders or other such measures.

Yellow cards are down by 26.7%, with 159 fewer issued. Most offenders (94.4%) receiving a yellow card are aged between 10-19; males are nearly 3 times more likely to receive a yellow card. These have been issued in Rhyl (22.0%), Prestatyn (11.7%), Denbigh (11.2%) and Abergele (9.1%).

Alcohol confiscation

Anyone drinking alcohol on the streets and causing a disturbance could be arrested if they fail to hand over their alcohol to a police officer or PCSO when asked to do so, or continue to drink alcohol in the area when asked not to do so by the police.

Alcohol confiscations are down 16.5%, with 44 fewer issued. These are mostly (48.8%) issued to males aged 15-19. There have also been a number issued to males aged 40-44 who are frequently drink in public places in town centres. These have been issued in Colwyn Bay (32.7%), Llandudno (12.5%), Abergele (10.8%) and Rhyl (8.5%).

2.8 Antisocial behaviour

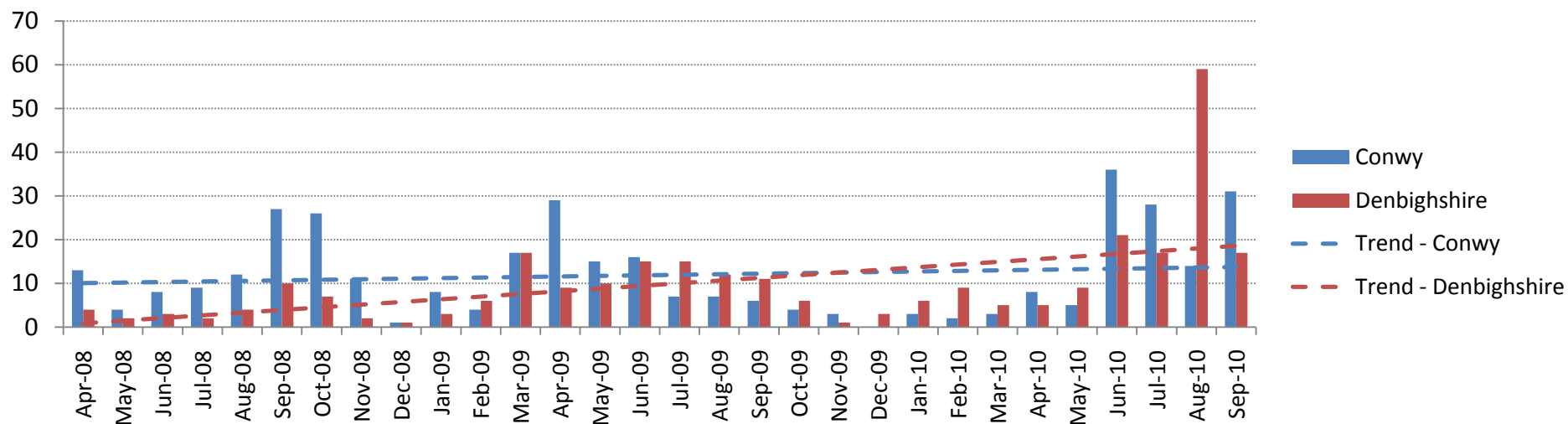
Youth restorative justice (YRD)

It gives specially trained police officers and police community support officers on-the-spot discretion to hold to account young people who have committed certain minor offences. It is only possible to use a YRD for a first offence and both the victim and harmer must agree to participate.

YRDs are down 21.0%, with 21 fewer issued. Offenders are aged 10-17, 62.0% are male. These have been issued in Llandudno (40.5%), Rhyl (8.8%), Abergele (8.8%) and Colwyn Bay (5.1%).

2.8 Antisocial behaviour

Number of fixed penalties issued for environmental crime in Conwy and Denbighshire



Fixed penalties issued for environmental crime

The Joint Enforcement Team in Conwy and Denbighshire issue fixed penalty notices (FPNs) to individuals to prevent and deter environmental offences. These are issued for;

- Dog fouling
- Fly posting
- Littering
- Smoking
- Waste notices
- Other

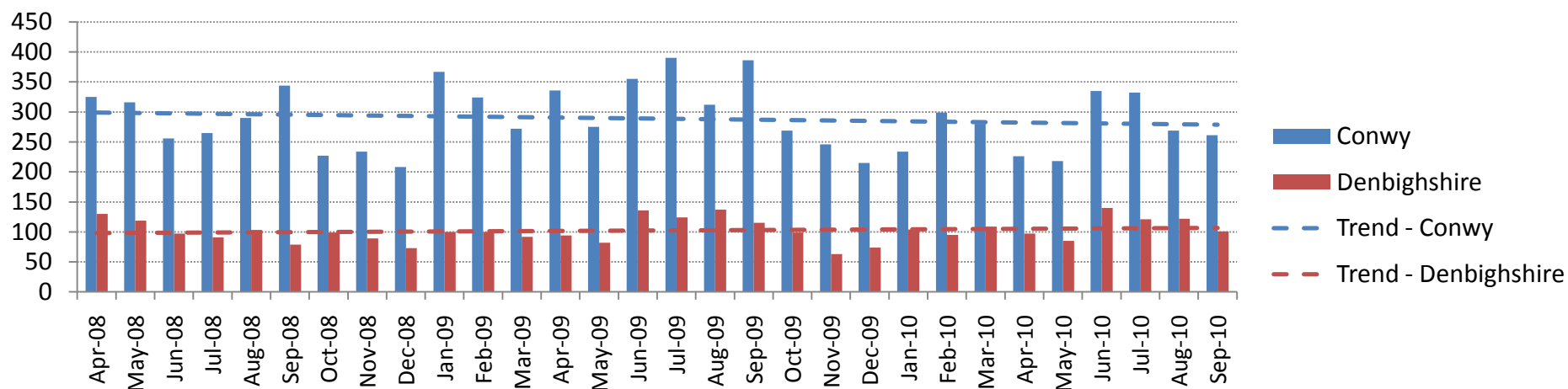
There has been a significant increase of 45.1% in the number of FPNs issued between Oct 09 – Sep 10 compared to 2009/10; with 96 more offences detected.

This change is due to a large increase in the number of FPNs issued for littering in both Conwy and Denbighshire as a result of the establishment of the Joint Enforcement Team and operations they have conducted.

65.8% of FPNs were issued for littering while 25.2% were issued for dog fouling during Oct 09 – Sep 10.

2.8 Antisocial behaviour

Number of ASB incidents reported to Conwy and Denbighshire local authorities



Antisocial behaviour incidents reported to local authorities

The number of antisocial behaviour incidents reported to Conwy CBC and Denbighshire CC has remained relatively unchanged since April 08 with approximately 280 a month in Conwy and 100 a month Denbighshire.

It should be noted that until September 2010 each local authority recorded ASB incidents independently and categorised them differently. This is the reason for a difference in the number of incidents reported in each area. From October 2010 onwards these

complaints will be recorded on the Conwy complaints database, Flare, only.

Removal of fly tipping is the most common complaint in both Conwy and Denbighshire accounting for 41.8% and 68.6% of complaints respectively. This has been well matched by the increase in fixed penalties issued for littering by the Joint Enforcement Team.

Dog fouling then accounts for nearly 10% of complaints in both Conwy and Denbighshire.

2.8 Antisocial behaviour

What are we doing about ASB?

Antisocial behaviour is any aggressive, intimidating or destructive activity that damages or destroys another person's quality of life. As a result it is considered to be a priority by all involved with the Community Safety Partnership in Conwy and Denbighshire.

The Community Safety Partnership is involved in managing a multi agency ASB practitioners group that aim to tackle ASB at all levels, in public places, social housing, licensed premises and repeat victims. This is overseen by the ASB Tasking Group which provides strategic support, monitors progress and promotes partnership working.

Conwy CBC and Denbighshire CC regulatory services now have a Joint Enforcement Team responsible for tackling incidents of antisocial behaviour, licensing and environmental crime. The Joint Enforcement Team is tasked via;

- A new web based interagency reporting tool allowing agencies outside of the local authorities to refer complaints from members of the public directly to the enforcement team.
- Problem areas identified through intelligence based analysis.
- Complaints received directly from the public.

The Joint Enforcement Team is also responsible for leading on test purchasing operations, licensing reviews and environmental crime operations.

This partnership approach to enforcement within Conwy and Denbighshire delivers a consistent message from all the agencies involved and focuses resources on identified problems.

The partnership has two ASB Officers responsible for coordinating and producing orders relating to antisocial behaviour e.g. noise abatement notices, criminal antisocial behaviour orders etc.

2.9 Offenders and reoffending - Summary

Key issues

- Offenders are predominantly male, 79.9%, with a peak age of 19 years old for both males and females.
- Male offenders aged 16-25 account for 1 in 3 offenders and are believed to be affected by alcohol in 50% of offences.
- The six most common offences for males and females are the same; these are less serious assaults, public order, drunk and disorderly, shoplifting and drink driving.
- The results from December 2009 show that both Conwy and Denbighshire have a lower reoffending rate than both North Wales and Wales.
- There has been a reduction in reoffending by priority and prolific offender; in Conwy there was a 29% reduction while in Denbighshire there was a 10% reduction, compared to a 15% reduction nationally.
- Offenders top criminogenic needs are help and support with thinking skills, alcohol, employment, training and education (ETE), emotional issues and relations.
- In 2009/10 North Wales had one of the lowest rates of youth reoffending in England and Wales with 0.79 reoffences per youth compared and national average of 1.00.

Outcomes

Reduce reoffending in Conwy and Denbighshire.

Indicators

A reduction in any of the following will contribute towards a reduction in reoffending;

- Detection rate
- Rate of reoffending
- Rate of reoffending by PPO cohort
- First time entrants to Youth Justice Service
- Prevent and deter referrals (PAD)

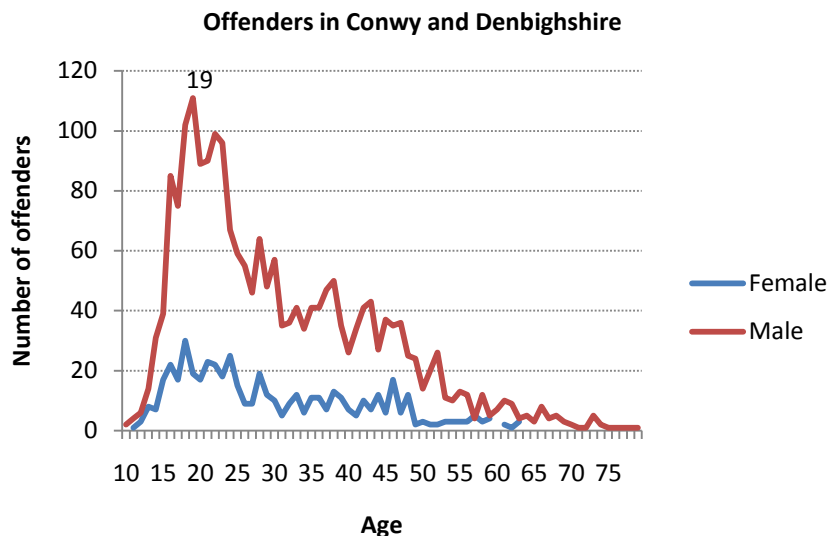
2.9 Offenders and reoffending

The management of offenders is crucial as a small number of offenders in Conwy and Denbighshire are responsible for a large proportion of the crime within both counties.

Year to date 2010/11 35.8% of crimes in Conwy and Denbighshire were detected by North Wales Police.

Who are the offenders?

The general profile of offenders in Conwy and Denbighshire is very similar with some individuals offending in both counties. Offenders are predominantly male, 79.9%, with a peak age of 19 years old for both males and females.



Males aged 16 to 25 years old

Males between the ages of 16 and 25 years old accounted for 1 in 3 of all offenders in Conwy and Denbighshire, between Oct 09 and Sep 10. These offenders most commonly commit public order or assault offences all of which contribute towards violence against the person and an increased fear of crime.

Alcohol is a significant factor amongst these offenders. Offenders in this group were believed to be under the influence of alcohol in more than 70% of the two most common offences of public order and assault, and nearly 50% of all offences they commit.

Alarming drink driving is the third most common offence by this group. Other common offences are criminal damage to vehicles, businesses and homes again with alcohol as a common factor.

All offenders

Although female offenders are fewer in number they are responsible for the same type of offences as males. The six most common offences for males and females are the same; these are less serious assaults, public order, drunk and disorderly, shoplifting and drink driving.

Although there are a small number of sexual offences the offenders responsible were all male.

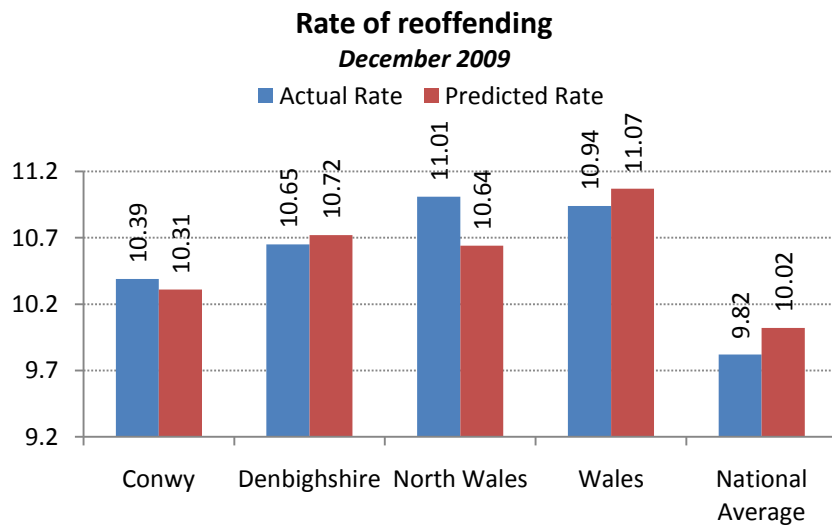
2.9 Offenders and reoffending

Adult offenders

The National Probation Service for England and Wales is a law enforcement agency which supervises adult offenders in the community. The Conwy and Denbighshire probation area is part of the North Wales Probation Service. The service works in partnership with the Police, HM Prisons, CPS, courts, local authorities, Betsi Cadwaladar Health Board and voluntary services.

The current rate of adult re-offending

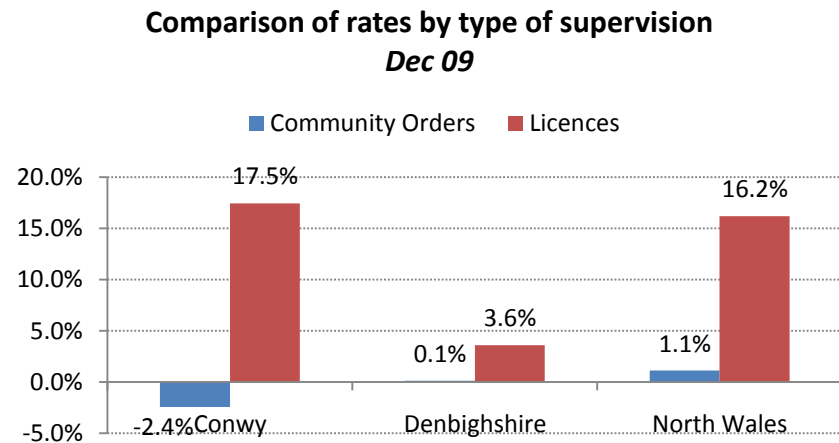
The rate of re-offending is based on a group of offenders sampled each quarter and monitored for repeat offences; the result is the number of repeat offences per 100 offenders.



The **predicted** rate is the number of repeat offences estimated to be committed by the group, based on the make up of the group e.g. more young offenders then a higher rate is predicted. The difference between the **predicted** and **actual** rate is an indicator of a reduction or increase in repeat offending than anticipated.

The results from December 2009 show that both Conwy and Denbighshire have a lower reoffending rate than both North Wales and Wales. However reoffending is higher than the national average for England and Wales.

When comparing the actual rate to the predicted rate Denbighshire has seen a difference of -0.6% while Conwy has seen a difference of +0.7%. A negative result shows less reoffending than anticipated with the reverse true for a positive result.



2.9 Offenders and reoffending

The previous chart shows that offenders on community orders are more likely to reoffend in Conwy and Denbighshire than offenders on licence.

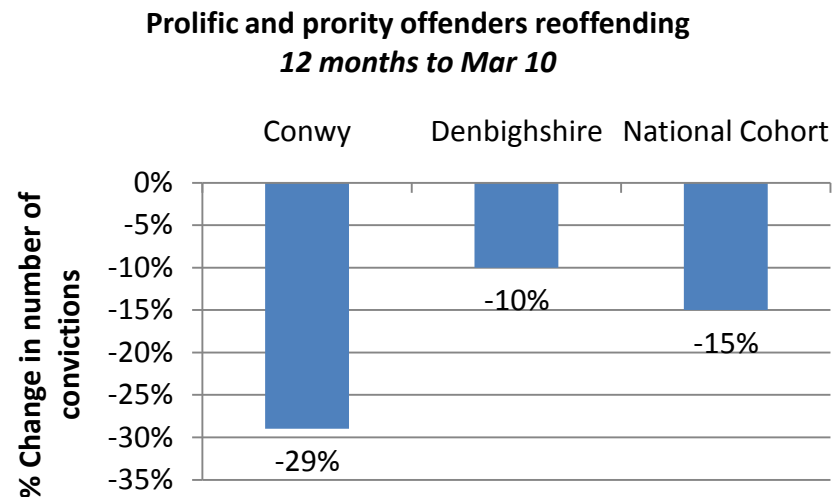
Prolific and priority offenders (PPOs)

The objective of the prolific and priority offenders (PPO) strategy is to break the cycle of offending by offering additional support to the chosen PPO's, and for those who continue to offend to ensure a swift effective return to court; thus reducing crime and the number of victims of those crimes.

There are three strands to the scheme:

- **Prevent and Deter** - This strand should help to stop the supply of new prolific offenders, and focuses on young offenders.
- **Catch and Convict** - This strand concentrates, on a small chosen group of offenders who have been identified as being part of that small percentage of offenders who commit a disproportionately high percentage of crimes. This particular group is targeted by a robust and proactive multi agency approach. These people are not engaging with the scheme and intelligence suggests that they are offending.
- **Rehabilitate and Resettle** - Here offenders are offered a choice, if you do not comply or if you re-offend, you will be returned quickly to court. Support is offered to this group, they may or may not be on a current probation order or prison release licence.

A multi-agency approach is essential involving monthly review meetings where progress is discussed and actions initiated on each individual. The essence of the scheme is to provide intensive supervision, with a 'carrot and stick' approach.



The identified group of PPOs in Conwy and Denbighshire both had a reduction in the number of convictions during the 12 months up to March 10. In Conwy there was a 29% reduction while in Denbighshire there was a 10% reduction, compared to a 15% reduction nationally.

2.9 Offenders and reoffending

Integrated offender management

The Home Office has recently announced plans for Integrated Offender Management (IOM). Conwy and Denbighshire will be launching a combined IOM team in March 2011.

The aim of IOM is to help local partners jointly to reduce crime and re-offending and improve public confidence in the Criminal Justice System. It focuses in particular on ensuring coordination and coherence between programmes and ways of working with offenders to ensure that those who cause most disruption and damage to local communities are identified and targeted.

In particular, IOM provides an opportunity to address potential overlaps between existing approaches and programmes to manage offenders and to address gaps - recognising that some high priority/highly damaging offenders may fall between the gaps in current arrangements. It builds on and expands current offender focused programmes, such as PPO by managing a selected and locally defined group of offenders who are in the community, regardless of whether they are under statutory supervision or not. Conwy and Denbighshire Community Safety Partnerships are planning to support IOM as the mechanism the partnerships use to tackle reoffending.

What drives adult offending?

Sentence Plan Outcomes¹³ provide an evaluation of what causes offenders to offend. The SPOs measure the **need** for support and the **intervention** provided in defined areas.

The findings of the sentence plan outcomes show that in North Wales the most frequent (above 40% of offenders) identified criminogenic needs were;

- Thinking skills
- Alcohol
- Employment, Training and Education (ETE)
- Emotional
- Relations

There are two needs where the difference to the national benchmark is most significant these are Alcohol which is above and Drugs which is below.

Identified needs above the national benchmark were;

- Alcohol
- Thinking skills
- Emotional
- Relations
- Accommodation

¹³ Sentence Plan Outcomes – July 2009, provided by Andy Jones Probation

2.9 Offenders and reoffending

There has actually been a decline in Thinking, ETE, Emotional and Relations as identified needs in sentence plans in North Wales in the last 3 years, despite being the most frequently identified.

Planned intervention surpasses identified need only for Alcohol and Drugs, in the case of Alcohol it is matched by the need. However for Drugs there is a large difference between need and intervention with 64% planned intervention while only 23% have identified it as a need. In contrast all other areas show a lower level of planned intervention than identified as a need, particularly for Thinking, Emotional, Relations, Lifestyle and ETE, all of which have a difference of more than 20% between identified need and planned intervention.

There is little if any change in identified needs between the start of sentence and the review / end of sentence.

The levels of intervention for most criminogenic needs increase during sentence plans between the start and review / end, particularly for ETE and Thinking both of which increase by more than 10%.

It is difficult to quantify how the status of the intervention at the point of review / end of sentence compared to the national benchmark. However Relationship, Drugs, Accommodation and ETE compare favourably with similar levels of status for either “not started”, “ongoing” or “fully achieved”. Unfortunately for Alcohol, Emotional, Thinking, Attitude, Finance and Lifestyle the proportion

“not started” is above the national benchmark while the proportion “ongoing” and “fully achieved” are lower than the national benchmark.

All criminogenic needs show a decrease in OASys (Offender Assessment System) scores between the start and review / end sentence. However these reductions are lower than the national benchmark in for all needs excluding lifestyle. In North Wales Emotional and Thinking are furthest away from the national benchmark reductions, with approximate 10% less of a reduction than seen nationally.

Based on a self assessment questionnaire completed by 355 offenders on probation across Conwy and Denbighshire more than 50% believed that the following factors are linked to their offending;

- Mixing with bad company
- Going to places which cause me trouble
- Taking drugs
- Drinking too much
- Doing things on the spur of the moment (only 49% in Denbighshire)
- Getting on with my husband / wife / partner (Denbighshire only)
- Looking after children (Denbighshire only)

2.9 Offenders and reoffending

Substance misuse, both alcohol and drugs, continue to be significant factors in influencing offending behaviour. However the sentence plan outcomes and self assessments highlight the need for support around employment, education and training and emotional issues.

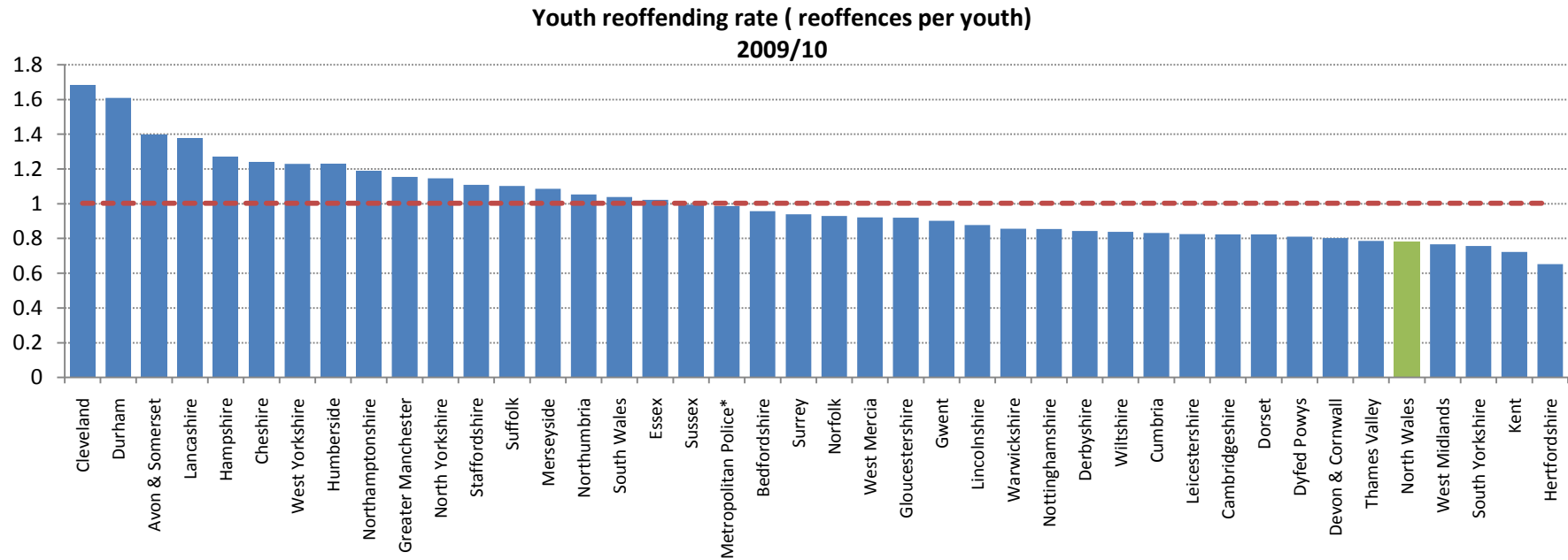
2.9 Offenders and reoffending – young offenders

Youth offenders

The Conwy and Denbighshire Youth Justice Service works with children and young people aged 8 to 17 years across the county borough, who have offended or are at risk of offending. Young people who offend will be systematically assessed, appropriately punished, helped and directed to change their behaviour and encouraged to compensate the victims of their crimes.

How do we compare to other areas?

In 2009/10 North Wales had one of the lowest rates of youth reoffending in England and Wales with 0.79 reoffences per youth compared and national average of 1.00.



2.9 Offenders and reoffending – young offenders

Youth reoffending

Reducing the rate of proven reoffending for young people is another important indicator of performance.

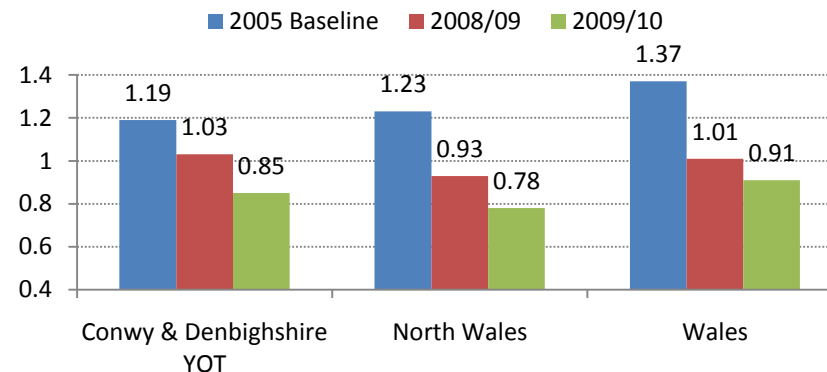
The Youth Justice Service aims to achieve an effective youth justice system, where:

- More offenders are caught, held to account for their actions, and stop offending
- Children and young people receive the support they need to lead crime-free lives
- Victims are better supported
- The public has more confidence in the youth justice system.

The Conwy and Denbighshire Youth Offending Team (YOT) are responsible for managing young offenders within the area. The team has been successful in reducing reoffending in Conwy and Denbighshire with a 28.4% reduction in the rate of reoffending when compared to the 2005 baseline.

During 2009/10 in Conwy and Denbighshire the rate of reoffending was higher than that in North Wales but lower than all Wales.

Rate of youth reoffending



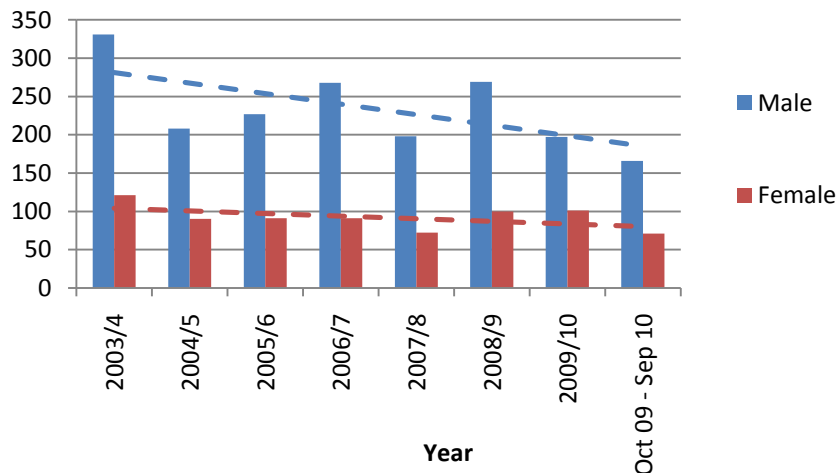
The reoffending rate of 0.85 in Conwy and Denbighshire compares very favourably with the England and Wales average of 1.0.

2.9 Offenders and reoffending – young offenders

First time entrants¹⁴

The reduction in first time entrants that are male since 2008/9 has been 52.3%, while female entrants have also reduced but the reduction has been far smaller, 28.7%.

First time entrants in Conwy and Denbighshire



Reducing the number of first time entrants to the Youth Justice System (YJS) is a key outcome for the Youth Offending Service, and also a national indicator of performance.

There has been a decline in the number of first time entrants to the Youth Justice System in Conwy and Denbighshire with 237 between Oct 09 to Sep 10 compared to 298 in 2009/10, a 20.5% reduction.

¹⁴ Data supplied by Youth Offending Service

2.9 Offenders and reoffending – young offenders

Prevent and deter in 2009/10

		Apr	May	Jun	Jul	Aug	Sep	Oct	Nov	Dec	Jan	Feb	Mar	Total
Input	Referrals Received	13	21	14	18	12	10	18	9	112	61	43	34	365
	Referrals Declined	5	4	6	5	5	4	2	3	94	52	32	19	231
	New Referrals	8	17	8	13	7	6	16	6	18	9	11	15	134
Activity	Referrals Active	7	16	6	12	5	3	2	3	10	4	10	8	86
	Referrals Inactive	1	1	2	1	0	1	3	1	1	1	0	6	18
	One off Interventions	2	5	4	4	2	2	11	3	5	4	1	1	44
Closures	Completed	8	0	10	9	8	5	9	10	8	3	1	3	74
	Engaged	8	1	9	9	7	4	9	8	5	2	6	4	72
	Non-engagement	0	1	1	0	1	1	0	2	3	1	6	0	16
	Out of Area	0	0	0	0	0	0	0	0	1	0	0	0	1
	Offended	1	1	2	1	0	0	1	0	0	0	0	0	6

Key points of prevent and deter in 2009/10

- A large increase in referrals from December onwards due to an increase in referrals from North Wales Police in both Conwy and Denbighshire.
- 302 of 379 referrals came from North Wales Police, 79.7%.
- 257 of 368 initial referrals were as a result of antisocial behaviour, 69.8%.
- There is a spike in referrals for substance misuse in December with 34 of the total 112 for that month, 30.4%. Particularly in Conwy.
- Referrals are most commonly male in both Conwy and Denbighshire.
- There is a peak in the age of referrals in Conwy of 14 & 15 while in Denbighshire the age range broader from 12 to 16, above 30 referrals.
- At time of closure referrals are almost entirely in full time education, 91 of 95.
- In Conwy domestic abuse, CAMHS and vulnerability are all notable complex issues while in Denbighshire the same is true although proportionally domestic abuse is the most significant.

2.10 Substance misuse - Summary

Key issues

- Local authorities in North Wales exhibit a higher rate of alcohol misuse than elsewhere in Wales with Denbighshire and Conwy having the 3rd and 4th highest rates in Wales, respectively.
- Drug misuse in Denbighshire is estimated to be above that seen across North Wales and Wales. While Conwy has levels of drug misuse below that seen across North Wales and Wales.
- Most referrals for drug treatment in Conwy and Denbighshire in 2009/10 were for heroin; 43.2% in Conwy and 39.9% in Denbighshire.
- Between Oct 09 and Sep 10 there were 920 drugs offences in Conwy and Denbighshire compared to 895 in 2009/10, a 3.7% increase.
- The number of individuals receiving a repeat referral to treatment for alcohol misuse in both Conwy and Denbighshire is the highest in North Wales and Wales.
- 424 offenders have undertaken the arrest referral scheme since December 2009.
- There has been an increase in the number of new contacts made by the Harm Reduction Service in Conwy of 6.8% and a decrease in Denbighshire of 5.9% in 2009/10.
- Alcohol and drug related admissions to YGC have fallen during the last 4 years.

Outcomes

Reduce the number of people with substance misuse issues in Conwy and Denbighshire..

Indicators

A reduction in any of the following will contribute towards tackling substance misuse;

- Number of referrals to structure treatment
- Number of repeat referrals to structured treatment
- New contacts by Harm Reduction service
- Number of offenders undergoing alcohol arrest referrals
- Alcohol and drug misuse per 100,000 residents
- Hospital admission for alcohol
- Hospital admissions for drugs
- Drugs offences recorded by North Wales Police

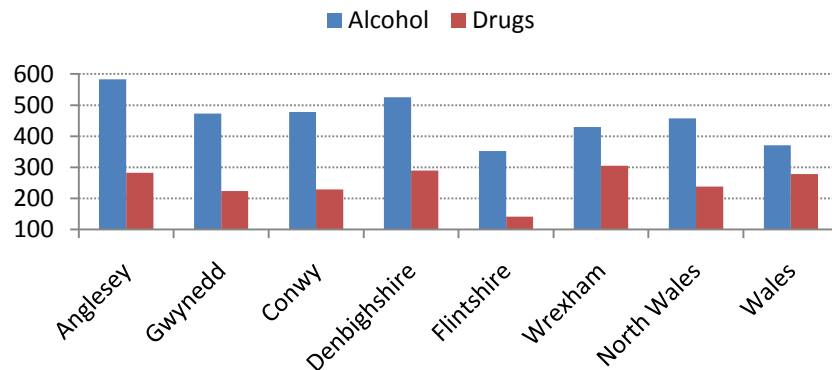
2.10 Substance Misuse

The impact of substance misuse

People who misuse drugs, alcohol or other substances cause considerable harm to themselves and to society. Harm is caused to the communities in which they live through the crime, disorder and anti-social behaviour associated with substance misuse. The Welsh Assembly Government has estimated that the total economic and social cost of Class A drug use in Wales is around £780 million, and that drug related crime accounts for 90% of this.

The following graphs show the estimated incidence rates across Welsh counties per 100,000 residents for both alcohol and drug misuse¹⁵.

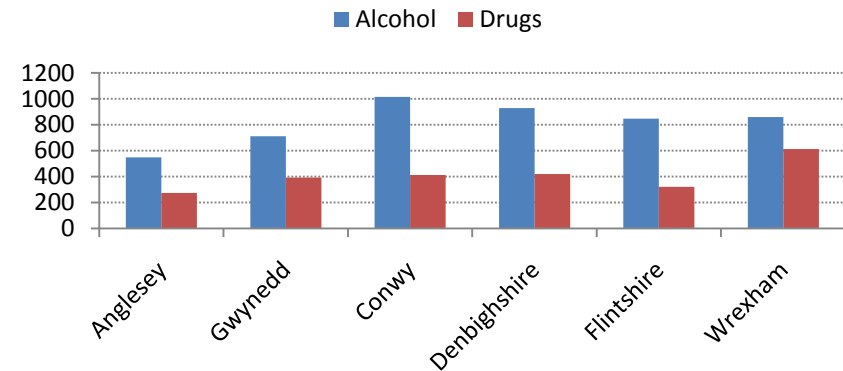
**Alcohol and drugs misuse per 100,000 residents
2009/10**



Local authorities in North Wales exhibit a higher rate of alcohol misuse than elsewhere in Wales with Denbighshire and Conwy having the 3rd and 4th highest rates in Wales, respectively. Unfortunately it is not possible to provide results for comparison from 2008/09 due to the recording process.

Drug misuse in Denbighshire is estimated to be above that seen across North Wales and Wales. While Conwy has levels of drug misuse below that seen across North Wales and Wales.

**Alcohol and drugs referrals to structured treatment
2009/10**



The number of individuals receiving a repeat referral to treatment for alcohol misuse in both Conwy and Denbighshire is the highest in North Wales and Wales. Between 58-60% of referrals in Conwy and Denbighshire were new cases in 2009/10. Conwy and Denbighshire have made more referrals to treatment for alcohol than most other

¹⁵ WAG – Substance Misuse in Wales 2009/10

2.10 Substance Misuse

authorities in Wales, only surpassed by Cardiff and Rhondda. This demonstrates the high level of alcohol misuse is being met by available treatment services.

The number of referrals to treatment for drug misuse in Conwy and Denbighshire is also above average for Wales. Between 52-55% of individuals referred to treatment for drugs in Conwy and Denbighshire were new cases in 2009/10.

Most referrals for drug treatment in Conwy and Denbighshire in 2009/10 were for heroin; 43.2% in Conwy and 39.9% in Denbighshire. The pattern of drug usage based on referrals is similar in both authorities with cannabis accounting for approximately 20%, cocaine and crack cocaine approximately 7% while the most significant difference being amphetamines with 9.4% in Conwy and 3.6% in Denbighshire.

Drugs offences in Conwy and Denbighshire (Oct 09 to Sep 10)

Between Oct 09 and Sep 10 there were 920 drugs offences in Conwy and Denbighshire compared to 895 in 2009/10, a 3.7% increase. This is due to an increase of 9.5% in Conwy while there has been a 3.7% decrease in Denbighshire; see 2.2 an overview of crime in our area.

Drugs offences in Conwy and Denbighshire are most commonly involve cannabis, 89.7% of these offences are for possession.

The forms of drugs detected through criminal offences do not match with the substances used by referrals to structured treatment. Cocaine, MDMA and Amphetamines occurred more frequently as a drug detected by police. This is be due to the recreational use of these drugs therefore the detections are resulting from the high level of policing around events and the night time economy in which there are used. An example of this are the large number of offences for MDMA (ecstasy) in Denbighshire, these are a result of the policing of Tidy Trax the dance music event at Pontins, Prestatyn.

Substance	Conwy	Denbighshire
Amphetamine	35	34
Cannabis	346	245
Class A (Unknown)	3	5
Class B (Unknown)	14	7
Class C (Unknown)	3	24
Cocaine	43	52
Crack cocaine	3	2
Heroin	27	11
MDMA	3	54
Mephedron	1	1
Unknown	5	2
Grand Total	483	437

2.10 Substance Misuse

ARCH Initiatives¹⁶

ARCH Initiatives Cymru was established in 2009 to provide a stronger focus to our criminal justice work in Wales.

ARCH provide services for anyone experiencing difficulty with substance misuse and offending across North Wales as part of the Welsh Assembly Government and UK Home Office Drug Intervention Programme.

The services are delivered in police custody suites and centres across Anglesey, Gwynedd, Flintshire, Wrexham, Conwy and Denbighshire.

ARCH work closely with North Wales Police, National Probation Service, Betsi Cadwaladr University Health Board, Welsh Assembly Government, Criminal Justice Board, local authorities and other partner agencies to offer an integrated service and ensure every person's needs are met.

Initiatives in Conwy and Denbighshire include;

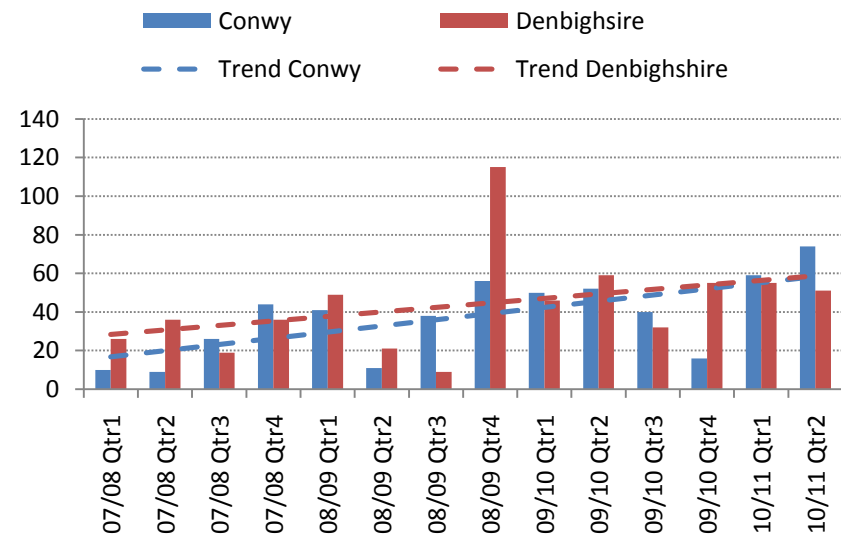
- Drug Rehabilitation Requirements (DRR)
- Alcohol Arrest Referral Services
- Drug Intervention Programme community support teams

¹⁶ http://www.archinitiatives.com/ARCH_Initiatives_Cymru

Harm reduction service

The Harm Reduction Service is a confidential service providing information and advice to people who use drugs and alcohol.

Number of new contacts made by the Harm Reduction Service



There were 158 new contacts made by the Harm Reduction Service in Conwy and 192 in Denbighshire during 2009/10. This is an increase of 6.8% in Conwy in 2009/10 compared to 2008/09. During the same period in Denbighshire there has been a 5.9% decline in new referrals with 12 fewer contacts.

2.10 Substance Misuse

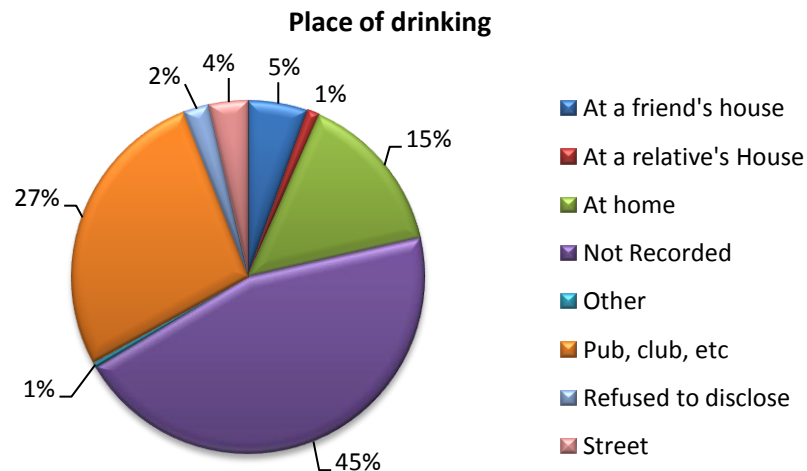
Alcohol arrest referrals

The scheme is offered to all offenders aged 18 years or over who are brought into custody for any offence where alcohol has been a factor.

It gives offenders a chance to look at the links between their drinking, anti-social behaviour and offending. The structured intervention is predominately custody-based but has the facility to arrange appointments away from the custody setting.

These assessments identify where they were drinking prior to being arrested. The following chart shows the breakdown of the 424 offenders that have completed an assessment since December 2009 and are resident in Conwy and Denbighshire.

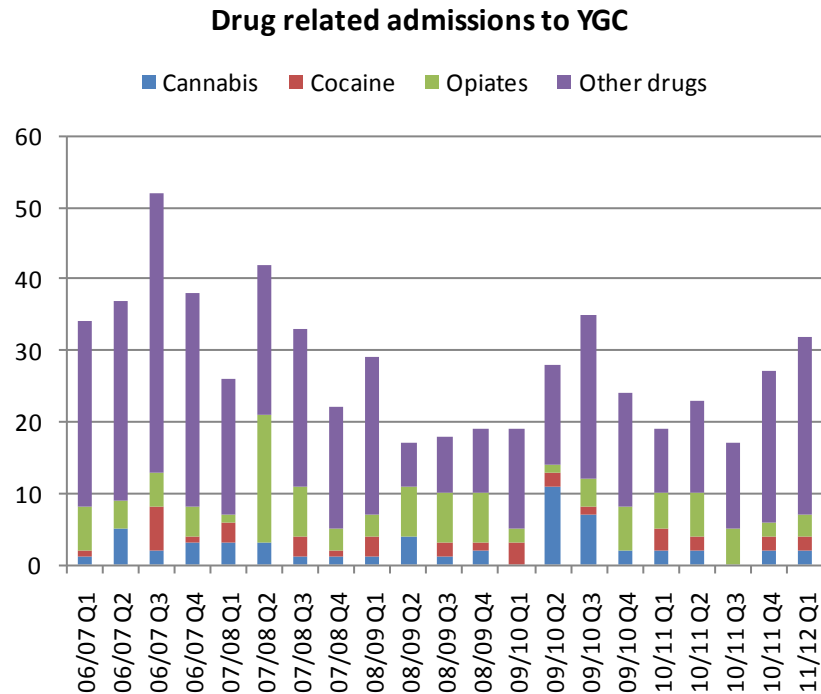
This information shows that although most drinking took place in a pub or club, 27%, a large proportion also took place either at home or at a friend or relatives home, 21%. Unfortunately for 45% of offenders this information was not recorded.



2.10 Substance Misuse

Drug related admissions to Ysbyty Glan Clwyd¹⁷

The following chart shows that number drug related admissions to Ysbyty Glan Clwyd.

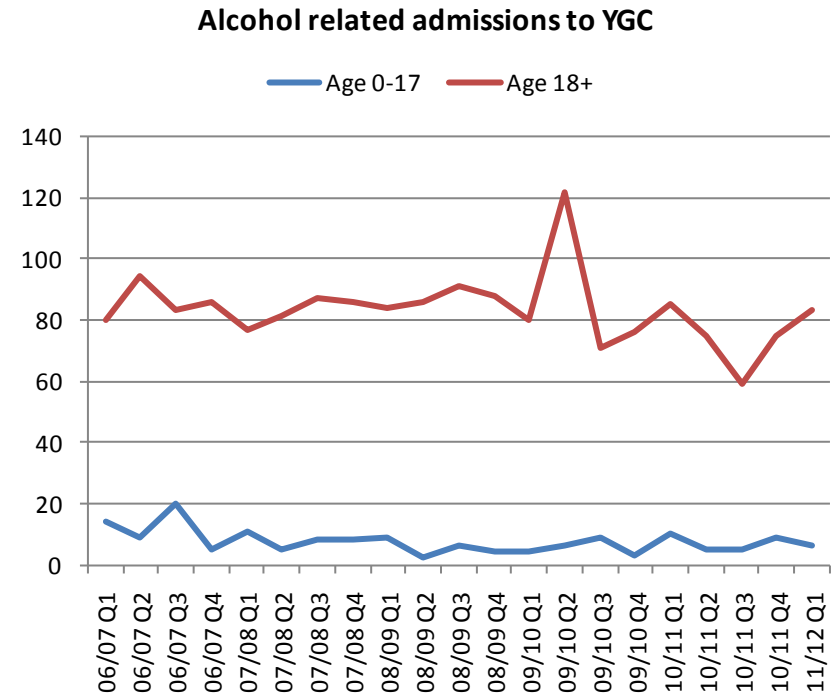


Other drugs include medication for epilepsy, schizophrenia and the use of caffeine and tobacco.

¹⁷ Data provided by NHS Wales Informatics Service

Alcohol related admissions to Ysbyty Glan Clwyd

The following chart shows the number of alcohol related admissions Ysbyty Glan Clwyd.



Admissions for peaked during mid 2009 coinciding with a peak in alcohol related violent crime recorded by North Wales Police.

2.11 Prevent Violent Extremism (PREVENT)

Preventing Violent Extremism (PREVENT)

PREVENT is one of the four work strands of the Government's counter-terrorism strategy, CONTEST. Its aim is to stop people becoming terrorists or supporting terrorism.

Until recently the partnership had followed an action plan that it had developed and used as a framework to the contribution of all partners in preventing violent extremism. It was divided into eight strands to address the combination of interlocking factors that contribute to violent extremism.

The first strand was Governance and was intended to drive through the following seven PREVENT objectives:

- Challenge Extremist ideology
- Disrupt those who promote violent extremism
- Support individuals who are vulnerable to recruitment by violent extremists
- Increase the resilience of communities
- Effectively address grievances

Supported by two cross-cutting work streams which were key partnership enabling functions in delivering the Prevent Strategy:

- Develop Prevent related intelligence, analysis and research
- Improve strategic communications

That work has now been completed and revised PREVENT strategy has just been launched (June 2011) which has been designed to learn from and build on the work completed under the previous strategy with a more focused approach. Work is ongoing to maintain momentum with partnership PREVENT work while the transition between the previous and the new agenda takes place. The new PREVENT agenda moves away from the previous 8 objectives and sets out the following 3 key objectives:

Objectives

Within the overall framework the new Prevent strategy will specifically:

- respond to the **ideological challenge** of terrorism and the threat we face from those who promote it;
- **prevent people from being drawn into terrorism** and ensure that they are given appropriate advice and support; and
- work with **sectors and institutions** where there are risks of radicalisation which we need to address.

Work will be required in the near future to develop a new partnership PREVENT action plan to deliver against the new agenda.

2.11 Prevent Violent Extremism (PREVENT)

Terrorism is amongst the most complex challenges facing the United Kingdom. Preventing violent extremism in Wales is a major long term challenge which will need to be addressed by key partners at every level – National, regional and local.

Wales CONTEST Board

The Wales CONTEST Board was established in March 2008, and is jointly chaired by Matt Jukes, Assistant Chief Constable, South Wales Police and Dr Emyr Roberts, Director of Social Justice & Local Government. The Board meets quarterly and receives regular updates on Prevent, Prepare, Pursue and Protect and is the main vehicle for liaising between the Police / Welsh Extremism & Counter Terrorism Unit (WECTU) activities on counter terrorism and the Welsh Assembly Government on community cohesion. It is supported by the Home Office Crime Team in Wales (HOCTIW).

The membership of the Board includes the Office for Security and Counter Terrorism (OSCT), WECTU, the Home Office Crime Director (Wales), the Police Authorities of Wales and the Chief Executive of the Welsh Local Government Association. This ensures a partnership approach to tackling issues relating to counter-terrorism/ violent extremism. The emphasis is on joint working and ensuring that relevant information is shared appropriately between the police, the Welsh Assembly Government / Home Office and local government.

Reporting Prevent Performance

The following 3 key performance indicators will be used to monitor performance:

KPI - RICH PICTURE

Welsh Extremism & Counter Terrorism Unit (WECTU), Counter Terrorism Units (CTUs) or Counter Terrorism Intelligence Units (CTIUs) and the Regional Security Service Stations (RG) joint assessment of Rich Picture understanding and the effectiveness of local policing input into the intelligence gathering process.

Production of an effective Counter-Terrorism Local Profile (CTLP)

A CTLP is a report that outlines the threat and vulnerability from violent extremist activity within a specific area (e.g. Police Basic Command Unit (BCU), local authority area or force). The principle aims are to:

- develop a joint understanding amongst local partners of the threats, vulnerabilities and risks relating to violent extremism;
- establish and increase a two-way flow in the sharing of information to support the delivery of Prevent and other strands of CONTEST;
- identify information gaps, opportunities and suggest recommendations for local partnership activity, so that the local action plan is targeted and proportionate;

2.11 Prevent Violent Extremism (PREVENT)

- support the mainstreaming of Prevent activity into day-to-day policing, local government and partnership work

Developing an effective action plan

Work will shortly be underway to develop a new, effective partnership plan under the revised PREVENT heading. All partners have been actively engaged with the previous plan and it is expected that the previous good partnership work will continue. This plan will include a programme of action that:

- meets the specific objectives of the Prevent strategy;
- is jointly agreed and managed by the police, local authority and other community safety partners;
- is proportionate to the level of threat in the area;
- reflects local needs;
- sets out clear and tangible milestones in tracking progress; and
- puts in place information sharing procedures between partners that will be crucial to ensuring effective working.

CSP's are also encouraged to ensure that current projects and programmes that are relevant to the Prevent strategy are mapped against local intelligence in order to identify gaps and opportunities for development. As well as considering what is being delivered at

a local level, when considering delivery across all strands of the Prevent strategy, local partners will wish to ensure that they:

- Make full use of community resources and expertise, involving communities in developing and delivering programmes. Engaging with local people in delivering projects that will help build confidence and capacity (for example, CSP's working with their police partners should look to establish appropriate forums to engage with vulnerable groups).
- Strike the right balance between targeted interventions with individuals and community-wide longer-term work to build resilience in communities;
- Mainstream Prevent activity across the work of all partners, not least in relation to providing support to vulnerable individuals (eg through building on targeted youth support arrangements); and
- Increase the focus on young people of school age, to equip them with the confidence to reject violent extremism. Working with schools, youth services colleges and universities is a critical element of work to tackle violent extremism and build long-term resilience.

3.0 Priority Areas and Outcomes

Priorities Areas

Priorities	Reduce crime and the impact on the community	Reduce re-offending	Effectively tackle ASB and behaviour adversely effecting the environment	Reduce harm caused by alcohol and substance misuse	Effectively tackle domestic abuse
Project Sponsor	NWP Local Authority Chief Inspector	Probation Andy Jones	CCBC Phil Rafferty	-	-
Project Manager	NWP Mel Brace / Gail McKenzie	YJS Emma Rathbone	CCBC / DCC Roly Schwartz	CCBC Ceriann Tunnah	DDC Michelle Davidson-Beck
Outcomes	Reduce crime and the fear of crime by working with the community	Reduce repeat offending	Fewer crimes in pubs and nightclubs	More support for people with drug and alcohol misuse issues	Proactively tackle domestic incidents and domestic crime
	Fewer violent crimes and alcohol related violent crimes	Reduce repeat offending by the most prolific offenders	Fewer incidents of arson, criminal damage and alcohol related criminal damage	More people discharged from support services free from drug and alcohol misuse issues	Improving the response to victims of domestic abuse
	Proactively tackle serious sexual crime	Reduce offending amongst under 18s	Proactively tackle incidents of antisocial behaviour	More support for people arrested for alcohol related issues	Raise awareness of violence against women and domestic abuse
	Fewer burglaries, robberies and vehicle crime		More prosecutions for environmental crime	Fewer people misusing drugs and alcohol	Proactively tackle domestic violent crime
	Fewer people who are a repeat victim of crime		Reduce availability of alcohol to young people	Fewer people admitted to hospital because of drugs & alcohol	Provide support for victims and children involved in domestic abuse