

GWELLA PARTH CYHOEDDUS CANOL TREF Y RHYL

RHYL TOWN CENTRE PUBLIC REALM IMPROVEMENT

PAM YDYN NI YMA HEDDIW? WHY ARE WE HERE TODAY?

Beth ydym ni'n ei wneud?

Rydym yn cynnal y digwyddiad hwn i arddangos ein cynlluniau ar gyfer gwelliannau i Ganol y Dref. Nod y prosiect yw uwchraddio nodweddion fel palmentydd, plannu a dodrefn stryd, er mwyn creu amgylchedd mwy croesawgar a phleserus i bawb.

Pam ydym ni'n gwneud hyn?

Pwrpas yr ymgynghoriad yw eich galluogi i ddod i weld y cynlluniau diweddaraf ar gyfer y cynllun a rhoi unrhyw adborth sydd gennych.

Beth ydym ni eisiau gwybod?

Cymerwch olwg ar y cynlluniau ar ein byrddau gwybodaeth ac yna rhowch adborth gan ddefnyddio nodiadau gludiog.

Pa wahaniaeth fydd hyn yn ei wneud?

Gobeithiwn, drwy ddeall beth sy'n bwysig i bobl sy'n byw, gweithio neu ymweld â'r Rhyl yn rheolaidd, y byddwn yn gallu cyflwyno gwelliannau a fydd yn helpu i wneud y dref yn lle mwy deniadol ac yn annog pobl i dreulio mwy o amser yno.

Sut bydd y gwaith yn cael ei ariannu?

Bydd y gwelliannau'n cael eu hariannu gan y Cronfa Adfywio Lleol (Local Regeneration Fund), sef arian gan Lywodraeth Ganolog sydd ar gael i gynghorau lleol i gyflwyno prosiectau adfywio sy'n cefnogi twf economaidd lleol ac yn gwella cymunedau.

Pryd fydd yr uwchraddiadau wedi'u cwblhau?

Disgwylir i'r gwaith ddechrau yn Gwanwyn 2027 gyda'r gwaith yn cael ei gwblhau erbyn Gwanwyn 2028.

What are we doing?

We are holding this event to display our plans for improvements to the Town Centre. The aim of the project is to upgrade features such as paving, planting and street furniture, to create a more welcoming and pleasant environment for all users.

Why are we doing this?

The purpose of the consultation is so you can see the latest plans for the scheme and provide any feedback you may have.

What do we want to know?

Please take a look at the plans on our information boards then provide feedback using sticky notes.

What difference will it make?

We hope that by understanding what is important to people who live in, work in or visit Rhyl regularly, that we will be able to deliver improvements which will help to make the town a more appealing place and encourage people to spend more time there.

How will the works be funded?

The improvements will be funded by and the Local Regeneration Fund, which is Central Government money available to local councils to deliver regeneration projects that support local economic growth and improve communities.

When will the upgrades be complete?

Works are expected to commence in Spring 2027, with completion expected to be in Spring 2028.



GWELLA PARTH CYHOEDDUS CANOL TREF Y RHYL

RHYL TOWN CENTRE PUBLIC REALM IMPROVEMENT

RHANNWCH EICH PROFIAD O GANOL Y DREF HEDDIW

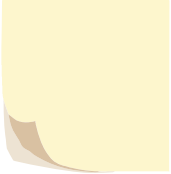
TELL US ABOUT YOUR EXPERIENCE OF THE TOWN CENTRE TODAY

1. Sut olwg a theimlad sydd i ganol y dref?
2. Beth ydych chi'n ei hoffi ac yn ei gasáu am ganol y dref heddiw?

Darparwch eich sylwadau neu awgrymiadau ychwanegol i wella'r prosiect.

1. How does the town centre look and feel to you?
2. What do you like, and dislike, about the town centre today?

Please provide your comments or additional suggestions to improve the project.



Rhannwch eich syniadau os gwelwch yn dda. Ysgrifennwch ar nodyn gludiog a'i roi yn y blwch.
Please share your thoughts - write it on a post-it and place it in the box:

GWELLA PARTH CYHOEDDUS CANOL TREF Y RHYL

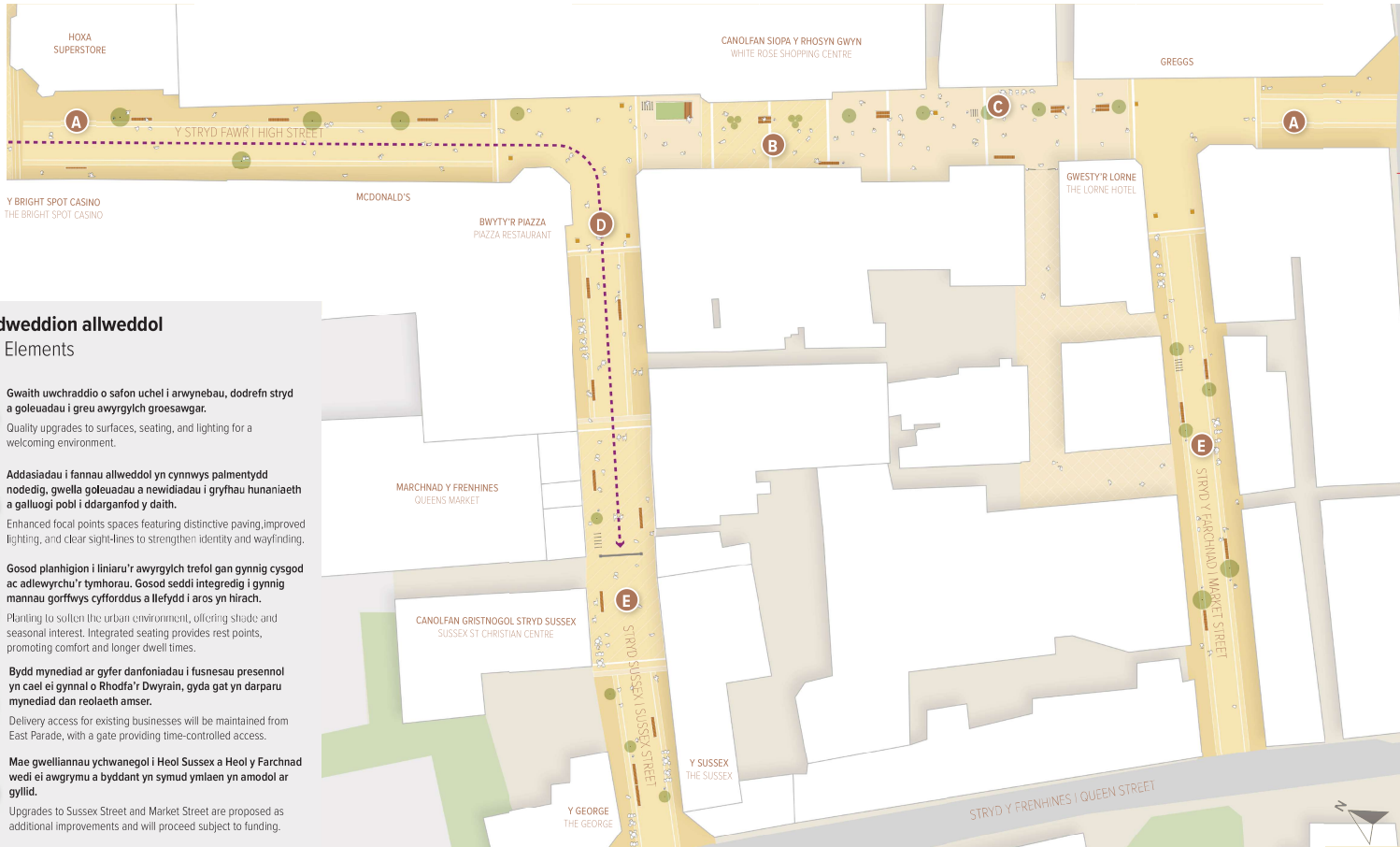
RHYL TOWN CENTRE PUBLIC REALM IMPROVEMENT

ARCHWILIWCH EIN CYNNIG: Y PRIF GYNLLUN CYSYNIADOL

EXPLORE OUR PROPOSAL: THE CONCEPT MASTERPLAN

Mae ein gweledigaeth ar gyfer Canol Tref y Rhyll yn canolbwyntio ar drawsnewid yr amgylchedd presennol i un o ansawdd uchel sy'n fwy croesawgar i bawb. Mae'r dyluniad yn gwella'r fynedfa i Ganolfan Siopa'r Rhosyn Gwyn ac yn cryfhau'r cysylltiad â'r promenâd, gan wneud i ganol y dref deimlo'n fwy cynhwysol, nodedig a phlesurus.

Our vision for Rhyll Town Centre focuses on transforming the current public space into a more welcoming, high-quality environment for everyone. The proposals will transform High Street, Sussex Street, Market Street and strengthens the link to the promenade, making the town centre feel more inclusive, distinctive, and enjoyable.



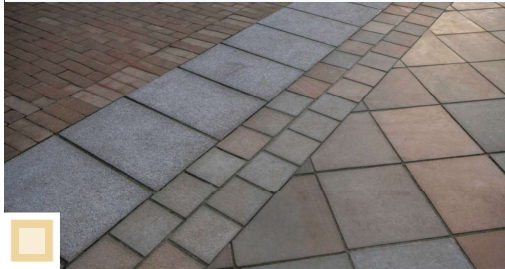
Nodweddion allweddol

Key Elements

- A** Gwaith uwchraddio o safon uchel i arwynebau, dodrefn stryd a goleuadau i greu awyrgylch groesawgar.
Quality upgrades to surfaces, seating, and lighting for a welcoming environment.
- B** Addasiadau i fannau allweddol yn cynnwys palmentydd nodedig, gwella goleuadau a newidiadau i gryfhau hunaniaeth a galluogi pobl i ddirgafnod y daith.
Enhanced focal points spaces featuring distinctive paving, improved lighting, and clear sight-lines to strengthen identity and wayfinding.
- C** Gosod planhigion i liniaru'r awyrgylch trefol gan gynnig cysgod ac adlewyrchu'r tymhorau. Gosod seddi integredig i gynnig mannau gorffwys cyfforddus a llefydd i aros yn hirach.
Planting to soften the urban environment, offering shade and seasonal interest. Integrated seating provides rest points, promoting comfort and longer dwell times.
- D** Bydd mynediad ar gyfer danfoniadau i fusnesau presennol yn cael ei gynnal o Rhodfa'r Dwyrain, gyda gat yn darparu mynediad dan reolaeth amser.
Delivery access for existing businesses will be maintained from East Parade, with a gate providing time-controlled access.
- E** Mae gwelliannau ychwanegol i Heol Sussex a Heol y Farchnad wedi ei awgrymu a byddant yn symud ymlaen yn amodol ar gyllid.
Upgrades to Sussex Street and Market Street are proposed as additional improvements and will proceed subject to funding.

Isod mae enghreifftiau o ddeunyddiau a dodrefn stryd sydd dan ystyriaeth:
Below are examples of materials and street furniture that are being considered:

Palmentydd o Ansawdd Uchel | High Quality Paving



Coed stryd | Street Trees



Planwyr annibynnol | Free Standing Planter



Parcio beiciau | Cycle Parking



Seddi nodwedd | Feature Seating



Meinciau a bolardiau pren | Timber Benches & Bollards



GWELLA PARTH CYHOEDDUS CANOL TREF Y RHYL

RHYL TOWN CENTRE PUBLIC REALM IMPROVEMENT

ARCHWILIWCH EIN CYNNIG: SUT ALLAI EDRYCH

EXPLORE OUR PROPOSAL : WHAT MIGHT IT LOOK LIKE

Bydd Canol Tref y Rhyl yn cael ei uwchraddio gyda phalmentydd o ansawdd uchel a seddi newydd i greu man cyhoeddus sy'n cael ei ofalu amdano ac sy'n groesawgar. Mae'r dyluniad arfaethedig yn canolbwyntio ar greu Stryd Fawr ble mae pobl am dreulio amser, mwynhau eu hymwelid a chael profiad o ganol y dref ar ei orau.

Rhyl town centre will be upgraded with high-quality paving and new seating - creating a public space that feels cared for and inviting. The proposed design focuses on making High Street a place where people want to spend time, enjoy their visit, and experience the town centre at its best.



OES GENNYCH CHI ADBORTH AR Y CYNIGION?

DO YOU HAVE ANY INITIAL FEEDBACK ON THE PROPOSAL?

Oes unrhyw beth hoffech chi ei newid neu ei wella? Defnyddiwch nodyn gludiog i rannu eich syniadau neu awgrymiadau.
Is there anything you'd like to change or improve? Use a post-it to share your thoughts, ideas, or suggestions

GWELLA PARTH CYHOEDDUS CANOL TREF Y RHYL

RHYL TOWN CENTRE PUBLIC REALM IMPROVEMENT

ARCHWILIWCH EIN CYNNIG: SUT ALLAI EDRYCH

EXPLORE OUR PROPOSAL: WHAT MIGHT IT LOOK LIKE

Bydd rhan ganolog y Stryd Fawr yn cael ei wella gyda phalmentydd o ansawdd uchel, gwyrddni a seddi — gan greu man cyhoeddus diogel a chroesawgar. Bydd Stryd Sussex a Stryd y Farchnad yn parhau i fod yn hygyrch i gerbydau yn ystod oriau gwasanaethu, ac caiff yr ardal ei hailgynllunio i deimlo'n fwy cyfeillgar i bobl. Bydd y uwchraddiadau hyn yn codi ansawdd canol y dref, gan ei wneud yn lle mwy croesawgar i fwynhau a threulio amser.

The central section of High Street will be enhanced with high-quality paving, greenery and seating - creating a safe and welcoming public space. Sussex Street and Market Street will remain accessible to vehicles during servicing hours, but will be redesigned to feel more people-friendly. These upgrades will lift the quality of the town centre, making it a more inviting place to spend time and enjoy.



OES GENNYCH CHI ADBORTH AR Y CYNIGION?

DO YOU HAVE ANY INITIAL FEEDBACK ON THE PROPOSAL?

Oes unrhyw beth hoffech chi ei newid neu ei wella? Defnyddiwch nodyn gludiog i rannu eich syniadau neu awgrymiadau.
Is there anything you'd like to change or improve? Use a post-it to share your thoughts, ideas, or suggestions

GWELLA PARTH CYHOEDDUS TŴR CLOC

CLOCK-TOWER PUBLIC REALM IMPROVEMENT

ARCHWILIWCH EIN CYNNIG: Y PRIF GYNLLUN CYSYNIADOL

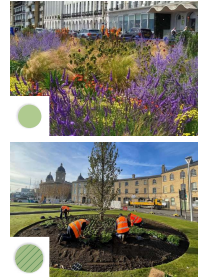
EXPLORE OUR PROPOSAL: THE CONCEPT MASTERPLAN

Ein gwledigaeth ar gyfer ardal Tŵr y Cloc yw gwella'r tirnod lleol hwn a chreu porth croesawgar, cynhwysol a gwyrded sy'n uno'r Stryd Fawr gyda'r promenâd. Drwy ail-drefnu Rhodfa'r Gorllewin a'r Dwyrain, gan gynnwys mynediad ar gyfer danfoniadau o Rhodfa'r Dwyrain, bydd y cynigion yn rhoi ardal yn ôl i bobl ar gyfer gweithgareddau a bywyd cyhoeddus, gan drawsnewid yr ardal yn le dinesig bywiog sy'n dathlu Tŵr y Cloc fel canolbwynt.

Our vision for the Clock Tower area is to enhance this local landmark and create a welcoming, inclusive, and green gateway that reconnects the High Street with the promenade. By re-aligning West and East Parade, while maintaining delivery access from East Parade, the proposals will give space back to people for activities and public life, transforming the area into a vibrant civic setting that celebrates the Clock Tower as a focal point.

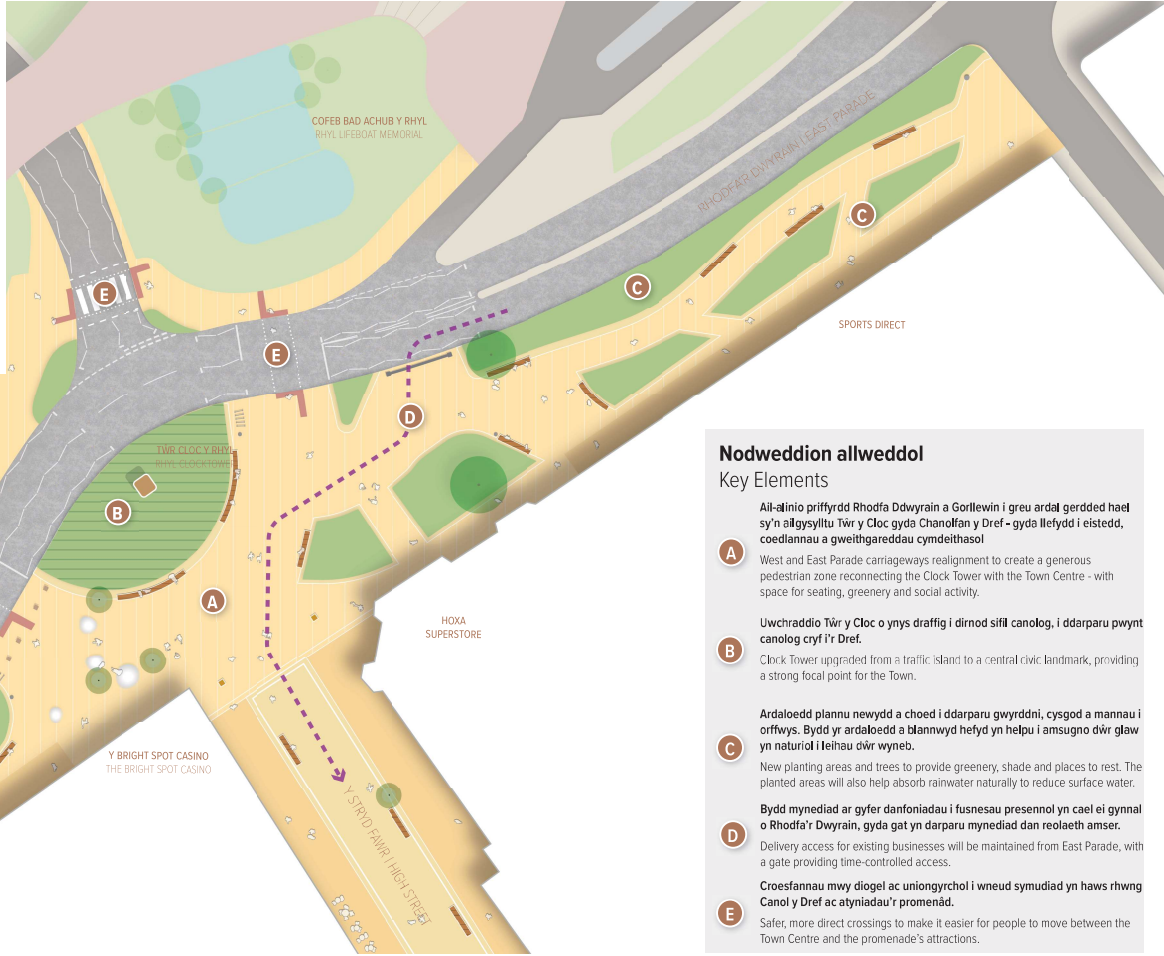
Pa un sydd orau gennych chi?

Which one do you prefer?



Ardaloedd plannu naturiolaid bywiog
Vibrant naturalistic planting areas

Gwelyau plannu cymunedol
Community planting beds



Nodweddion allweddol

Key Elements

- A** Ail-ainio priffyrdd Rhodfa Ddwyrain a Gorllewin i greu ardal gerdded hael sy'n ailgysylltu Tŵr y Cloc gyda Chanolfan y Dref - gyda llefydd i eistedd, coedlannau a gweithgareddau cymdeithasol
West and East Parade carriageways realignment to create a generous pedestrian zone reconnecting the Clock Tower with the Town Centre - with space for seating, greenery and social activity.
- B** Uwchraddio Tŵr y Cloc o ynys draffig i dirdod sifil canolog, i ddarparu pwynt canolog cryf i'r Dref.
Clock Tower upgraded from a traffic island to a central civic landmark, providing a strong focal point for the Town.
- C** Ardaloedd plannu newydd a choed i ddarparu gwyrddni, cysgod a manau i orffwys. Bydd yr ardaloedd a blannwyd hefyd yn helpu i amsugno dŵr glaw yn naturiol i leihau ôr wyneb.
New planting areas and trees to provide greenery, shade and places to rest. The planted areas will also help absorb rainwater naturally to reduce surface water.
- D** Bydd mynediad ar gyfer danfoniadau i fusnesau presennol yn cael ei gynnal o Rhodfa'r Dwyrain, gyda gat yn darparu mynediad dan reolaeth amser.
Delivery access for existing businesses will be maintained from East Parade, with a gate providing time-controlled access.
- E** Croesfannau mwy diogel ac uniongyrchol i wneud symudiad yn haws rhwng Canol y Dref ac atyniadau'r promenâd.
Safer, more direct crossings to make it easier for people to move between the Town Centre and the promenade's attractions.

ARCHWILIWCH EIN CYNNIG: SUT ALLAI EDRYCH

EXPLORE OUR PROPOSAL: WHAT MIGHT IT LOOK LIKE

