

## Why not contact us...

it's free, independent & safe!



Helpline 0845 120 3730  
helpline@snapcymru.org  
www.snapcymru.org  
www.wmff.co.uk



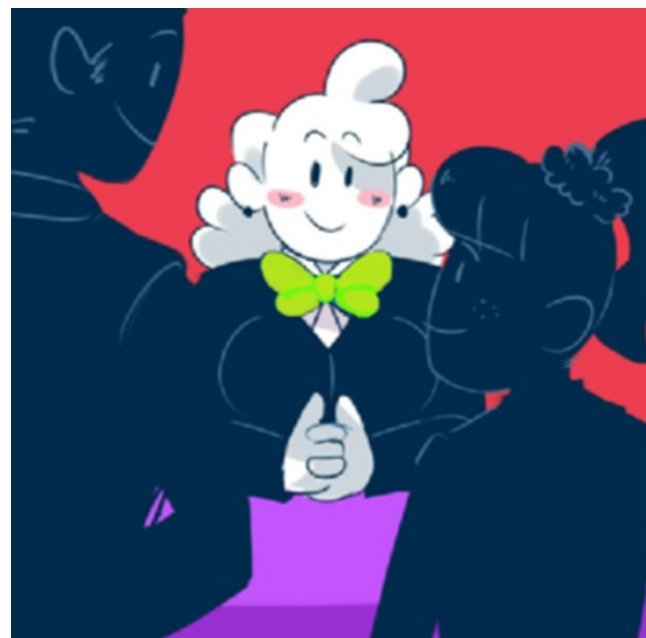
Registered Charity No 1027599 / Limited Company No 2832114

## Who can help?

If you decide to **make an appeal**, you can ask for a **Case Friend** to support you. A SNAP Cymru Family and Young Persons Officer can be your Case Friend. They really understand Special Educational Needs and how the system works!

They can help you:

- ✓ Sort disagreements informally
- ✓ Find out if you have a right to appeal
- ✓ Understand information and ensure your wishes and views are heard at SENTW
- ✓ Complete the Appeal Application and support you at the Tribunal



## Glossary

### Local Authority

The Local Authority is part of government. The Local Authority make decisions about your school and learning support.

### Special Educational Needs (SEN)

You may have Special Educational Needs if you need more help in with your learning than other children.

### Statutory Assessment

A Statutory Assessment and re-assessment is organised by the Local Authority to find out whether you have Special Educational Needs and what additional help you might need. This information can then be written in a Statement of your Special Educational Needs.

### Educational Psychologist

Educational Psychologists are trained to understand how children and young people learn and develop. They offer specialist advice to help children and young people learn.

### Statement of Special Educational Needs

A Statement is a report about you. It is written by your Local Authority and describes your Special Educational Needs. Your Local Authority may decide that you need a Statement after carrying out an Assessment. It should say exactly what extra help you need in school and what that help should look like. It will also name the school you will go to.



Helping you  
find your  
voice!!!



Making an Appeal  
To The Special Educational  
Needs Tribunal Wales

Information for Children & Young People



## Support in school

If you have Special Educational Needs and extra support in school, lots of decisions are made 'about you' or 'for you'. You may sometimes disagree with these decisions.

Under Article 12 of the United Nations Convention on the Rights of the Child (UNCRC), **you have a right to be listened to and have your views taken seriously.**

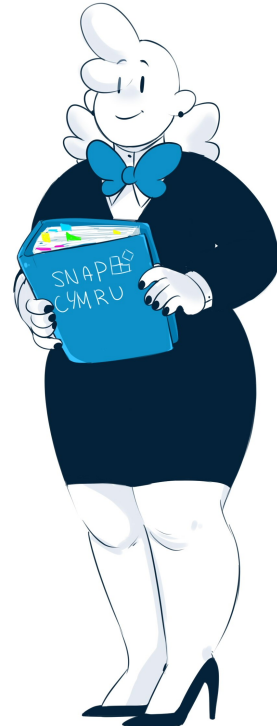
If you live in Wales and have Special Educational Needs you can participate in decisions that affect you by making your own **appeal to the Special Educational Needs Tribunal Wales (SENTW).**

## Getting extra help to learn

If the extra help you have at school isn't enough to help you learn, your Local Authority has a duty to make decisions about your education.

They will ask for more information about you and learn more about you and what help you need.

They must write to you to tell you their decision. They must also tell you (in a letter) that if you do not agree with their decision you can make an appeal.



## What is an Appeal?

An appeal is **when you disagree with the decisions** that the Local Authority has made about your educational support and you want to **challenge their decision and have it changed.** This means you can ask a special court, called a tribunal, to **look at the decision that has been made and see if it is fair.** You or your family will get the chance to talk to the tribunal and give your views and opinions.

## What you can Appeal about?

- ✓ Needing more help to learn
- ✓ What sort of help would make your learning better
- ✓ What school you want to go to

## Important time limits

*You have 2 months to make an appeal.*

*The 2 months start from the date when the Local Authority told you about its final decision in a letter.*

## What is a Tribunal?

**SENTW is a tribunal.** People can go to a tribunal if they are unhappy about certain official decisions that affect them. They will not take sides but **they will check that important rules and laws have been followed correctly when decisions were made.** If the tribunal find that the law was not followed correctly then the tribunal can **make an order** to make changes or put things right.

For example, a tribunal order can be about:

- ✓ What difficulties you have with learning
- ✓ What extra support you need
- ✓ What schools you go to

The tribunal will tell you if they do not agree with your appeal. The appeal **will be dismissed** and no tribunal order will be made.

To find out more about how to appeal and to see a video clip of what happens at a tribunal see:

**[www.sentw.gov.wales](http://www.sentw.gov.wales)**